

REFERENCE PLAN OF EASEMENT
for Sanitary Sewer Line through
Remainder of Lot 3, Plan 12423
District Lot 3050, Cariboo District
B.C.G.S. 93 G.097

Scale: 1:500 (All distances are in metres)



Grid bearings are derived from observations between
Control Monuments 86H1848 and 86H1738
Integrated Survey Area No. 39, City of Prince George

LEGEND

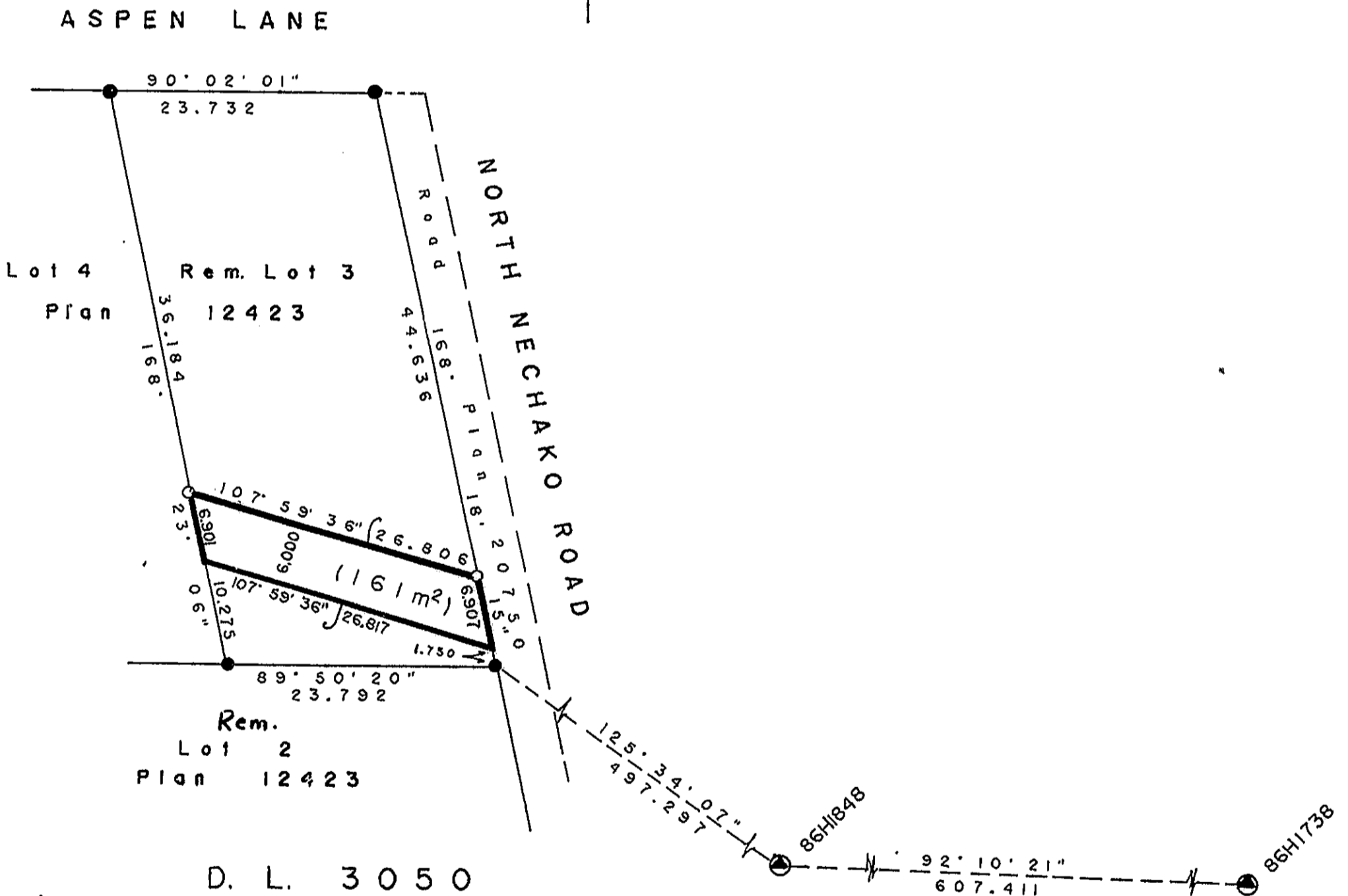
- ⊙ Control Monument found
- Standard iron post found
- Standard iron post placed

Note: This plan shows ground level measured
distances. Prior to computation of U.T.M.
co-ordinates multiply by the combined
factor 0.99951174

PLAN NO. PGP 38202

Deposited in the Land Title Office at Prince George
this 24 day of Aug. 1994

[Signature]
Registrar
PH33937 per dg



26-FF-226

I A. Daniluck a British Columbia Land Surveyor of
Prince George in British Columbia certify that I
was present at and personally superintended the
survey represented by this plan and that the
survey and plan are correct. The survey was
completed on the 15th day of July 1994.

[Signature]
A. Daniluck, B.C.L.S.

A. Daniluck
B. C. Land Surveyor
Prince George - B.C.

REF. NO. 94-016

This Plan lies within the Fraser - Fort George Regional District