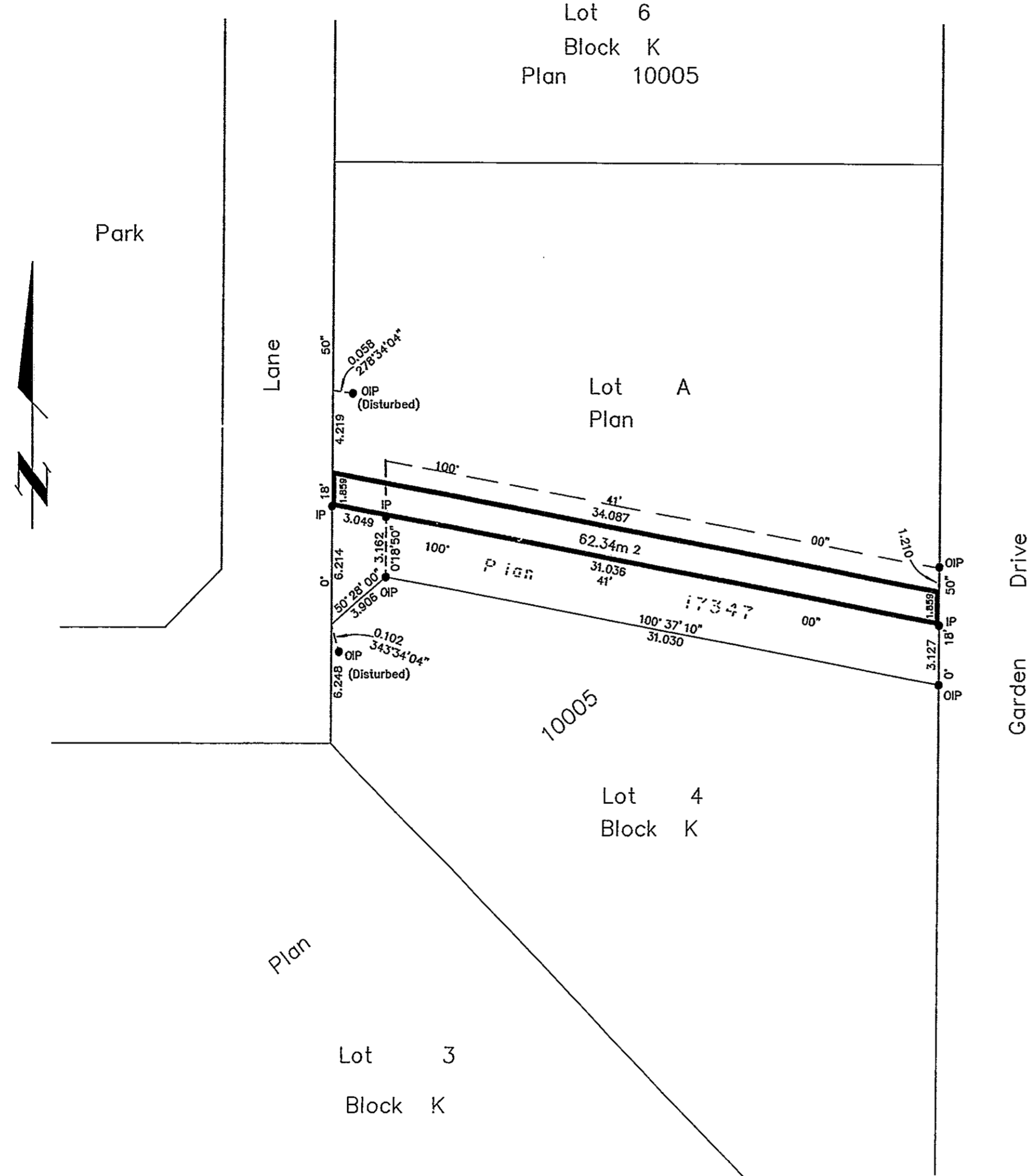


26-FF-226

PLAN NO. PGP38129

Deposited in the Land Title Office at Prince George this 20 day of July 1994

deputy REGISTRAR J. Carlson



PLAN OF RIGHT-OF-WAY WITHIN LOT A, PLAN PGP38128, DISTRICT LOT 936, CARIBOO DISTRICT.

B.C.G.S. 93G.097

Scale: 1 : 200 (Distances are in metres)



Bearings are astronomic, derived from Plan 10005

LEGEND

- IP Denotes Standard Iron Post
- Wt Denotes Witness
- O Denotes Old

BOOK OF REFERENCE	
DESCRIPTION	AREA
Lot A, Plan PGP38128	62.34m ²

I, Gordon Kilbride, a British Columbia Land Surveyor of Prince George in British Columbia, certify that I was present at and personally superintended the survey represented by this plan and that the survey and plan are correct. The survey was completed on the 17th day of October, 1990.

Gordon Kilbride
Gordon Kilbride, B.C.L.S.

This plan lies within the Fraser-Fort George Regional District.

McWilliam, Whyte, Goble & Associates
B.C. Land Surveyors, Prince George
(604) 562-1196 & 564-5322 (fax 562-3656)
Kamloops - Smithers - Williams Lake

F.B.- SE 48 D.L.- 936 REF. NO.- 90908RW