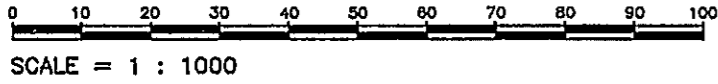


REFERENCE PLAN OF EASEMENT THROUGH
 LOT 2, PLAN PGP 38106, D. L. 4031
 AND THE REM. OF THE EAST 1/2 OF
 THE SOUTH EAST 1/4 OF D. L. 4031
 CARIBOO DISTRICT
 B.C.G.S. 93J.007

PLAN No. PGP 38107

DEPOSITED IN THE LAND TITLE OFFICE
 AT PRINCE GEORGE, B.C., THIS 12
 DAY OF July, 1994

W. H. Gandy /dg
 REGISTRAR

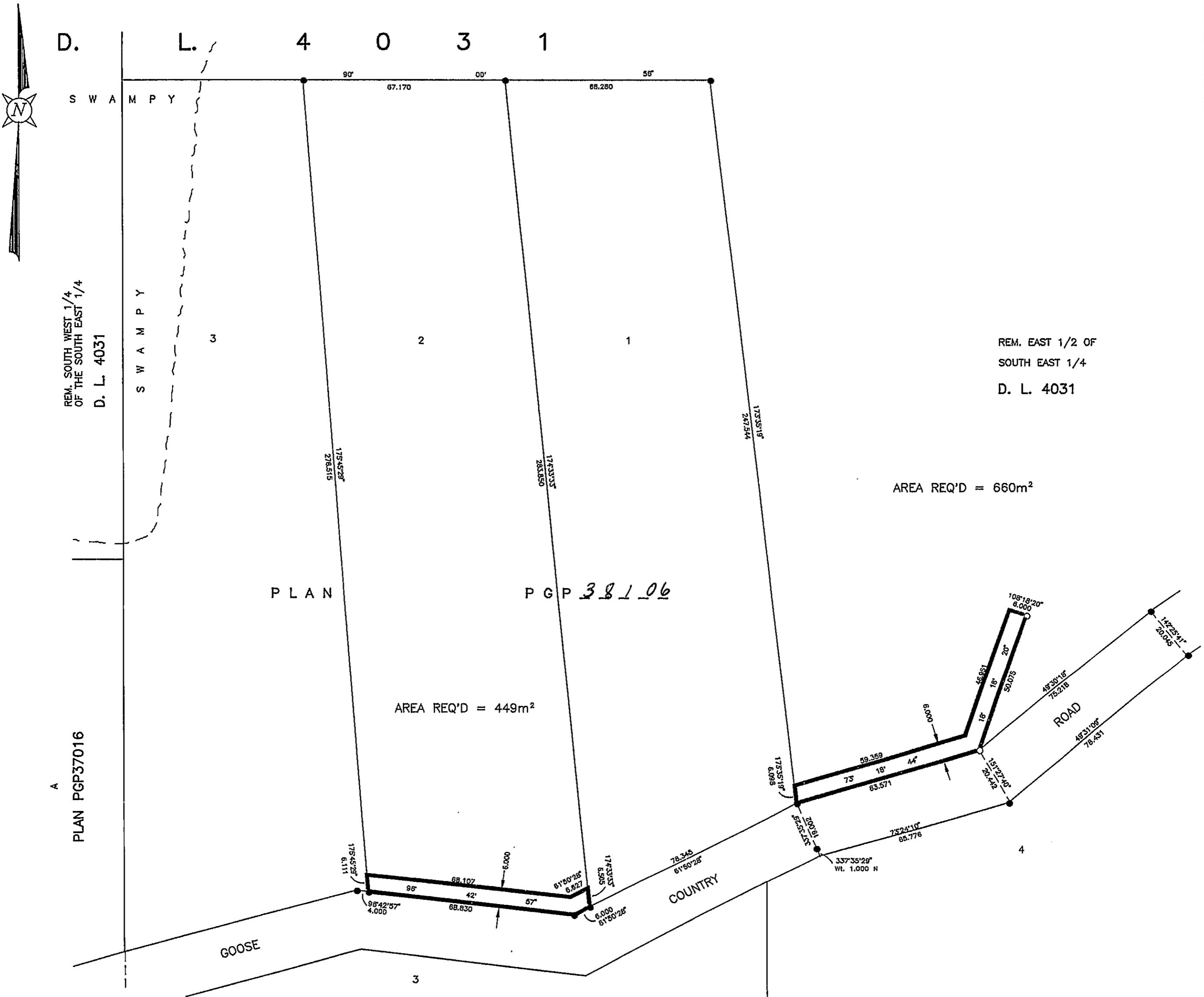


BEARINGS ARE ASTRONOMIC, DERIVED
 FROM PLAN PGP -----

LEGEND
 ● STANDARD IRON POST FOUND
 ○ STANDARD IRON POST PLACED

BOOK OF REFERENCE	
DESCRIPTION	AREA REQUIRED
LOT 2, PLAN PGP <u>38106</u> , D.L. 4031	449m ²
REM. EAST 1/2 OF S.E. 1/4 D.L. 4031	660m ²

26 FF-226



I, RONALD L. JOHNS, A BRITISH COLUMBIA LAND SURVEYOR, OF PRINCE GEORGE, IN BRITISH COLUMBIA, CERTIFY THAT I WAS PRESENT AT AND PERSONALLY SUPERINTENDED THE SURVEY REPRESENTED BY THIS PLAN AND THAT THE SURVEY AND PLAN ARE CORRECT. THE SURVEY WAS COMPLETED ON THE 17TH DAY OF MAY, 1994.

R.L. Johns
 R.L. JOHNS, B.C.L.S.

THIS PLAN LIES WITHIN THE FRASER-FORT GEORGE REGIONAL DISTRICT.

R. L. JOHNS LAND SURVEYING LTD.
 LEGAL AND ENGINEERING SURVEYS
 240 VICTORIA STREET
 PRINCE GEORGE, B. C. V2L 2J4
 PHONE: (604)562-5759
 FAX: (604)562-5703