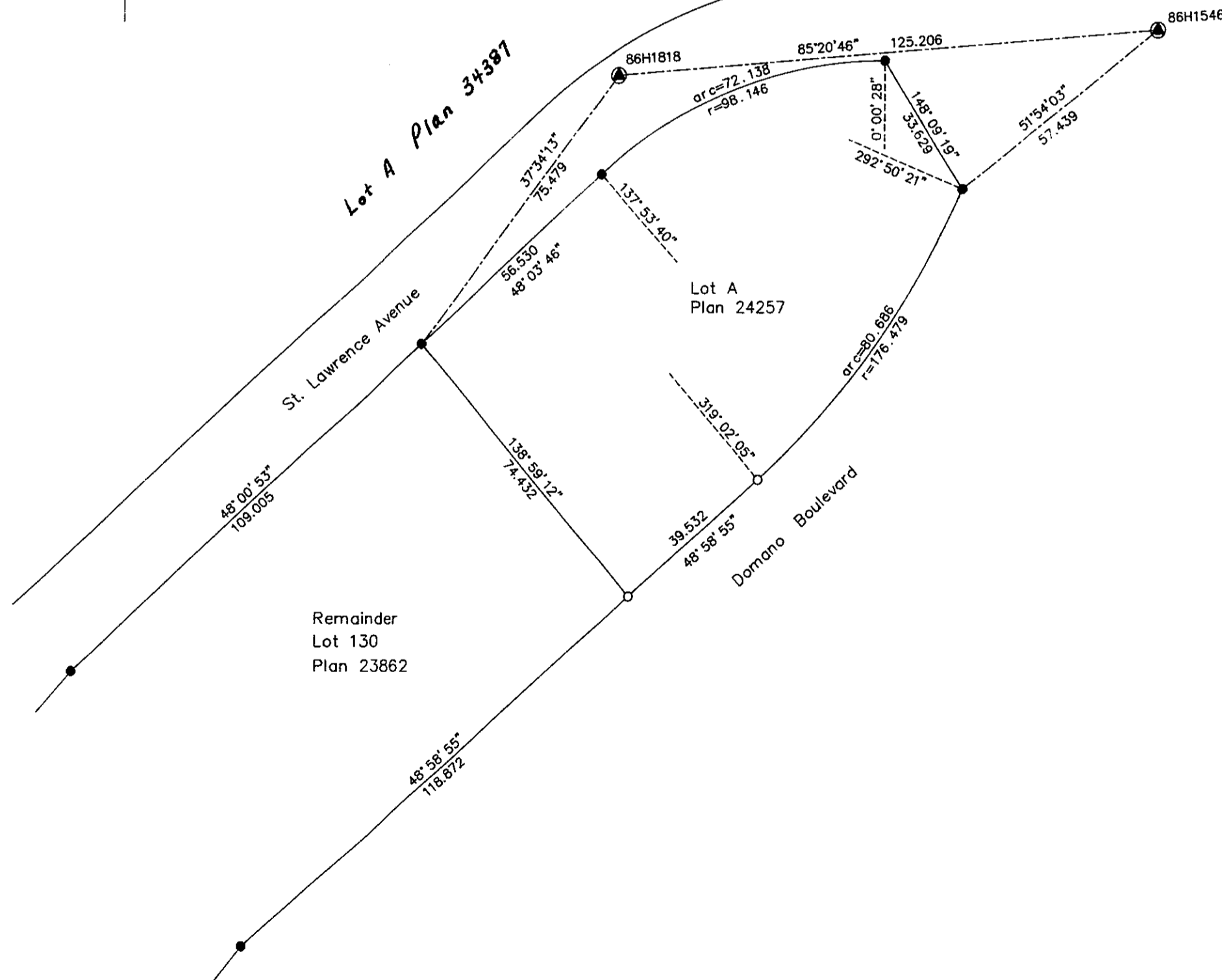


26 FF-226

PLAN NO. PGP38032

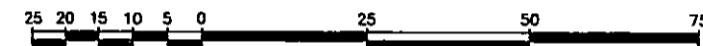
Deposited in the Land Title Office at Prince George this 22 day of June 1994



PLAN OF POSTING OF LOT A, PLAN 24257, D.L 754, CARIBOO DISTRICT.

B.C.G.S. 93G.087

Scale: 1 : 1000 (Distances are in metres)



Note: This plan shows ground level measured distances. Prior to computation of U.T.M. co-ordinates multiply by the combined factor 0.99950657

Grid bearings are derived from observations between control monuments 86H1818 and 86H1546, integrated survey area number 39, City of Prince George, B.C.

LEGEND

- Standard Iron Post Found
- Standard Iron Post Placed
- ⊙ Control Monument

I, Dale L. Keown, a British Columbia Land Surveyor of Prince George in British Columbia, certify that I was present at and personally superintended the survey represented by this plan and that the survey and plan are correct. The survey was completed on the 8th day of April, 1994.

Dale Keown
 Dale L. Keown, B.C.L.S.

This plan lies within the Fraser-Fort George Regional District.

KILBRIDE LAND SURVEYING LTD. British Columbia Land Surveyors Prince George, B.C. Ph: (604) 562-1196 Fax: 562-3656		
F.B.- TL 56	D.L.- 754	REF. NO.- 940101