

26 FF-226

PLAN NO. PGP37968

Deposited in the Land Title Office at Prince George this 25 day of May 1994

PLAN OF STATUTORY RIGHT OF WAY
OVER PART OF REMAINDER OF
PARCEL A, (PLAN 24734,) OF S.E. 1/4
DISTRICT LOT 4046,
CARIBOO DISTRICT.

Gordon Kilbride
REGISTRAR

B.C.G.S. 93G.097

Scale: 1 : 2500 (Distances are in metres)



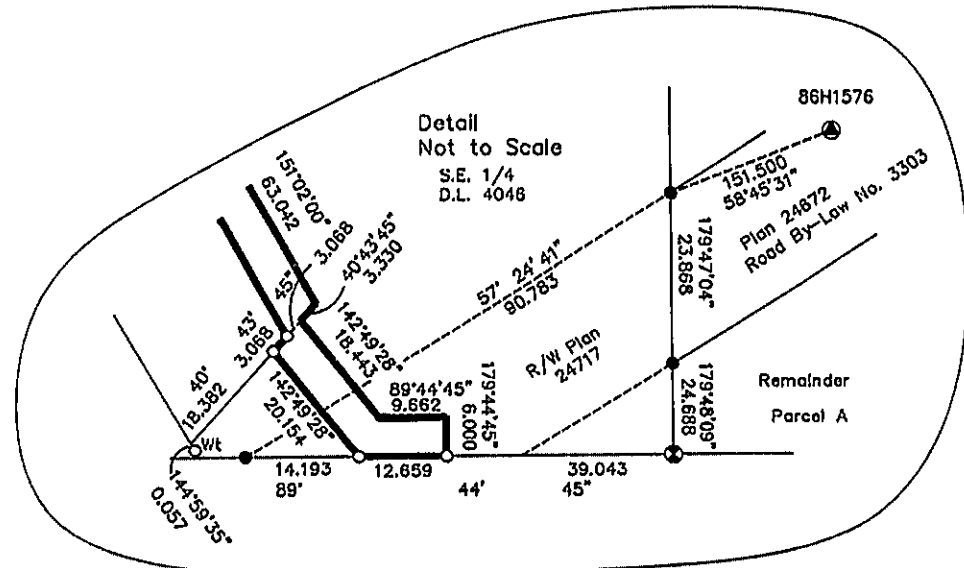
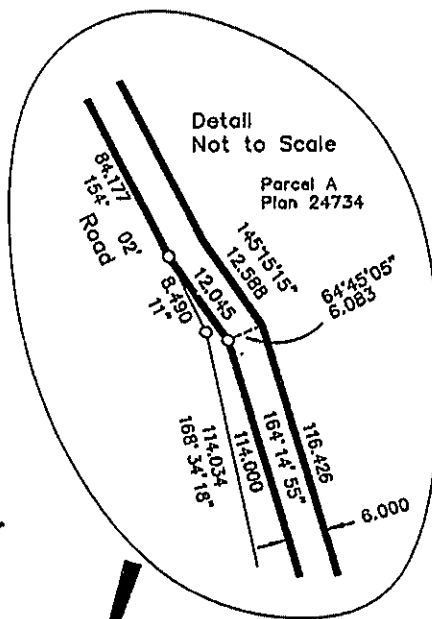
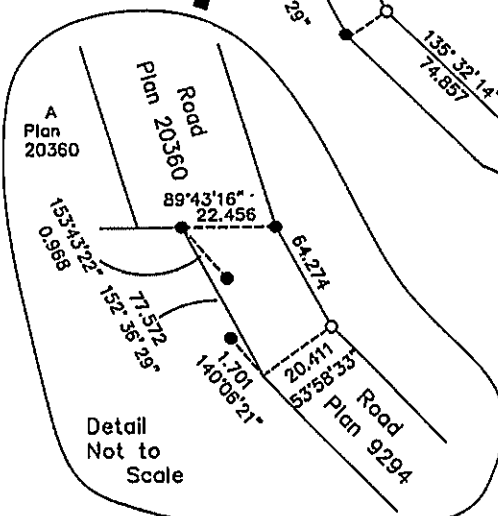
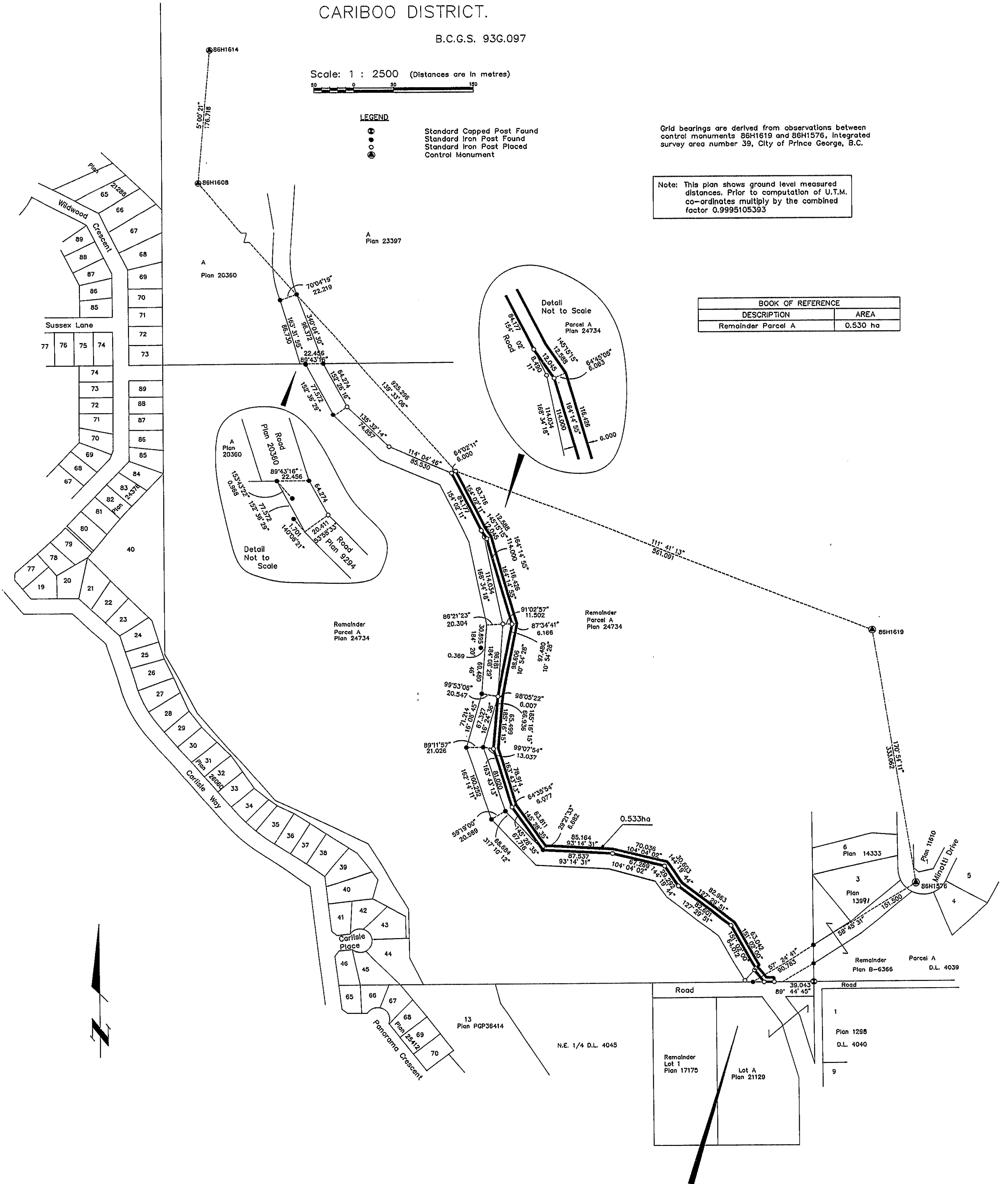
LEGEND

- Standard Capped Post Found
- Standard Iron Post Found
- Standard Iron Post Placed
- Control Monument

Grid bearings are derived from observations between control monuments 86H1619 and 86H1576, integrated survey area number 39, City of Prince George, B.C.

Note: This plan shows ground level measured distances. Prior to computation of U.T.M. co-ordinates multiply by the combined factor 0.9995105393

BOOK OF REFERENCE	
DESCRIPTION	AREA
Remainder Parcel A	0.530 ha



I, Gordon Kilbride, a British Columbia Land Surveyor of Prince George in British Columbia, certify that I was present at and personally superintended the survey represented by this plan and that the survey and plan are correct. The survey was completed on the 21 day of December, 1993.

Gordon Kilbride
Gordon Kilbride, B.C.L.S.

This plan lies within the Fraser-Fort George Regional District.

KILBRIDE LAND SURVEYING LTD. British Columbia Land Surveyors Prince George, B.C. Ph: (604) 562-1196 Fax: 562-3656		
F.B.- RA	D.L.- 4046	REF. NO.- 930824A

TL May 28/94