

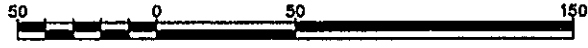
PLAN OF STATUTORY RIGHT OF WAY
OVER PART OF LOT B, PLAN 24547,
DISTRICT LOT 4046, CARIBOO DISTRICT.

PLAN NO. PGP37785

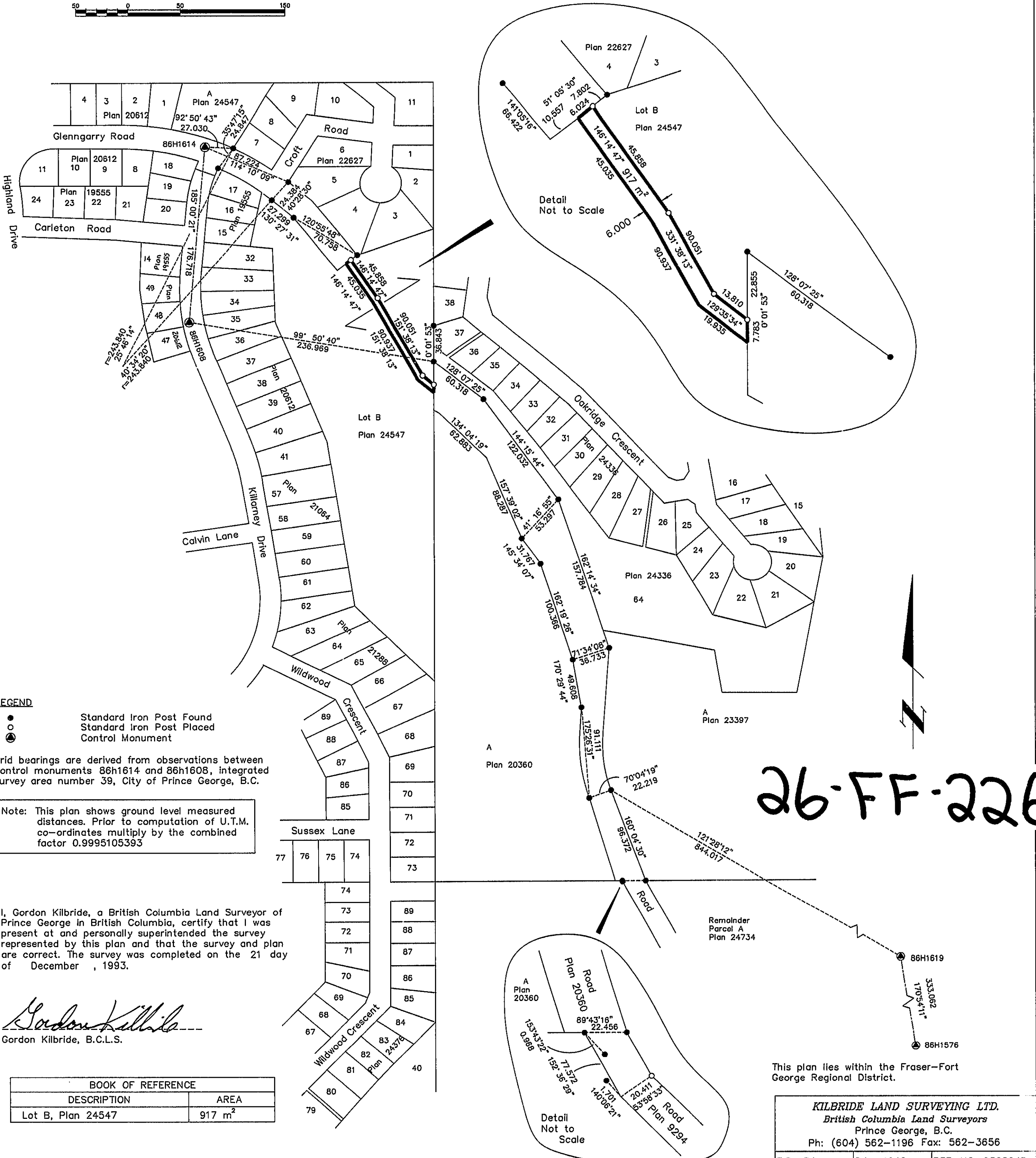
Deposited in the Land Title Office at Prince
George this 24 day of February 1994

B.C.G.S. 93G.097

Scale: 1 : 2500 (Distances are in metres)



W. A. Dandy
REGISTRAR



LEGEND
 ● Standard Iron Post Found
 ○ Standard Iron Post Placed
 ⊙ Control Monument

Grid bearings are derived from observations between control monuments 86h1614 and 86h1608, integrated survey area number 39, City of Prince George, B.C.

Note: This plan shows ground level measured distances. Prior to computation of U.T.M. co-ordinates multiply by the combined factor 0.9995105393

I, Gordon Kilbride, a British Columbia Land Surveyor of Prince George in British Columbia, certify that I was present at and personally superintended the survey represented by this plan and that the survey and plan are correct. The survey was completed on the 21 day of December, 1993.

Gordon Kilbride
Gordon Kilbride, B.C.L.S.

BOOK OF REFERENCE	
DESCRIPTION	AREA
Lot B, Plan 24547	917 m ²

26-FF-226

This plan lies within the Fraser-Fort George Regional District.

KILBRIDE LAND SURVEYING LTD.
British Columbia Land Surveyors
Prince George, B.C.
Ph: (604) 562-1196 Fax: 562-3656
F.B.- RA D.L.- 4046 REF. NO.- 930824B