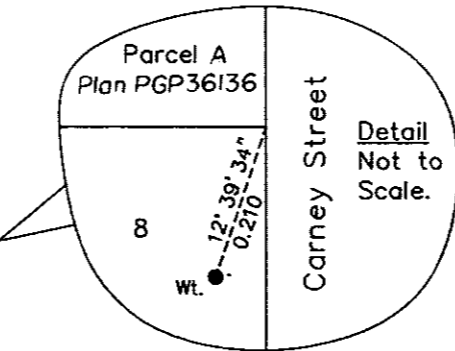
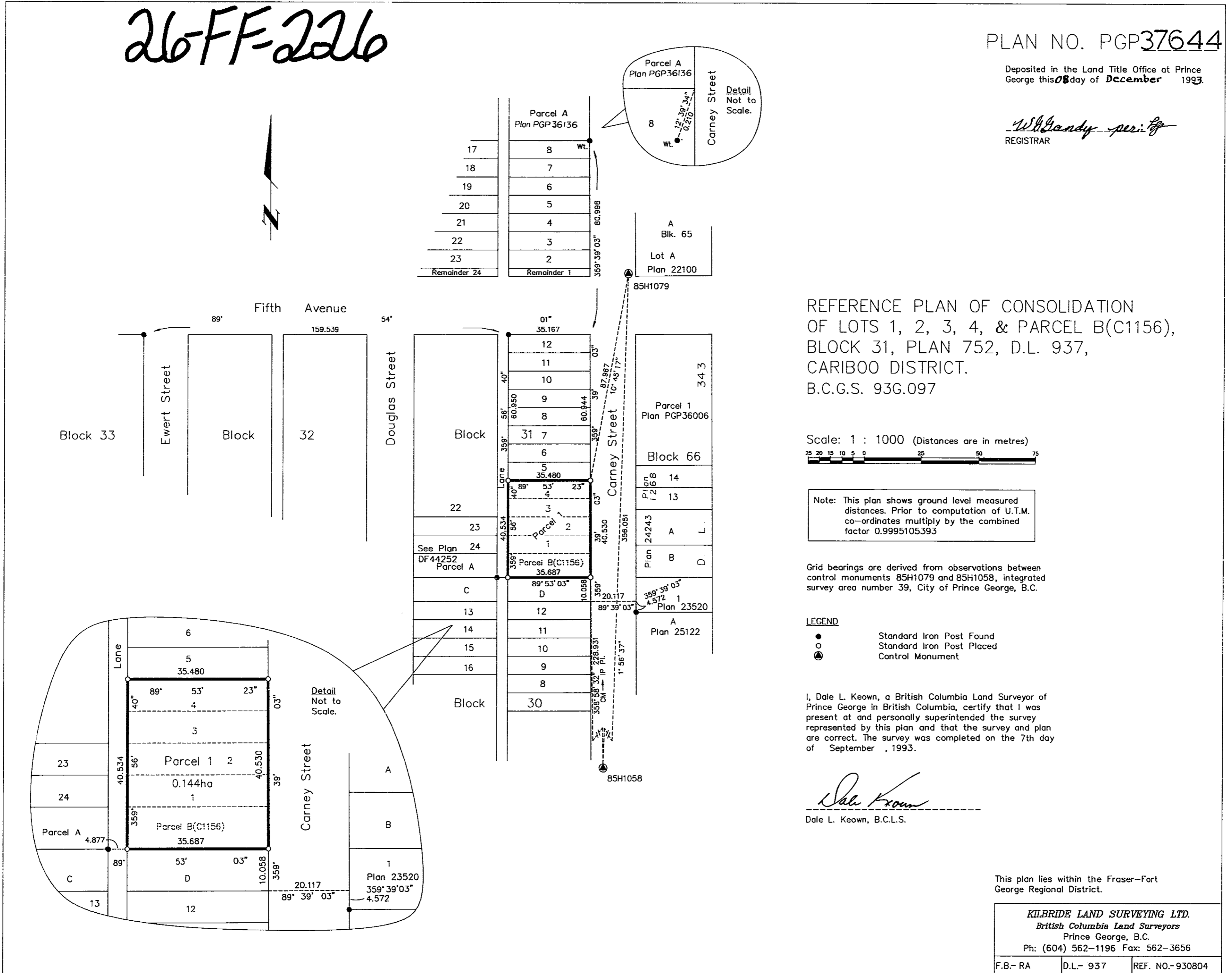


26-FF-226

PLAN NO. PGP37644

Deposited in the Land Title Office at Prince George this 08 day of December 1993.

W. Gandy per: [Signature]
REGISTRAR



17	8	Wt.
18	7	
19	6	
20	5	
21	4	
22	3	
23	2	
Remainder 24	Remainder 1	

REFERENCE PLAN OF CONSOLIDATION OF LOTS 1, 2, 3, 4, & PARCEL B(C1156), BLOCK 31, PLAN 752, D.L. 937, CARIBOO DISTRICT. B.C.G.S. 93G.097

Scale: 1 : 1000 (Distances are in metres)

Note: This plan shows ground level measured distances. Prior to computation of U.T.M. co-ordinates multiply by the combined factor 0.9995105393

Grid bearings are derived from observations between control monuments 85H1079 and 85H1058, integrated survey area number 39, City of Prince George, B.C.

LEGEND

- Standard Iron Post Found
- Standard Iron Post Placed
- ⊙ Control Monument

I, Dale L. Keown, a British Columbia Land Surveyor of Prince George in British Columbia, certify that I was present at and personally superintended the survey represented by this plan and that the survey and plan are correct. The survey was completed on the 7th day of September, 1993.

Dale Keown
Dale L. Keown, B.C.L.S.

This plan lies within the Fraser-Fort George Regional District.

KILBRIDE LAND SURVEYING LTD.		
British Columbia Land Surveyors		
Prince George, B.C.		
Ph: (604) 562-1196 Fax: 562-3656		
F.B.- RA	D.L.- 937	REF. NO.- 930804