

26-FF-226

PLAN NO. PGP37567

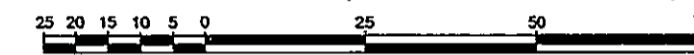
Deposited in the Land Title Office at Prince George this 10 day of November 1993.

*A. G. Handy per. ty*  
REGISTRAR

REFERENCE PLAN OF RIGHT OF WAY WITHIN LOT 1, PLAN 17144, DISTRICT LOT 749, CARIBOO DISTRICT.

B.C.G.S. 93G.087

Scale: 1 : 1000 (Distances are in metres)

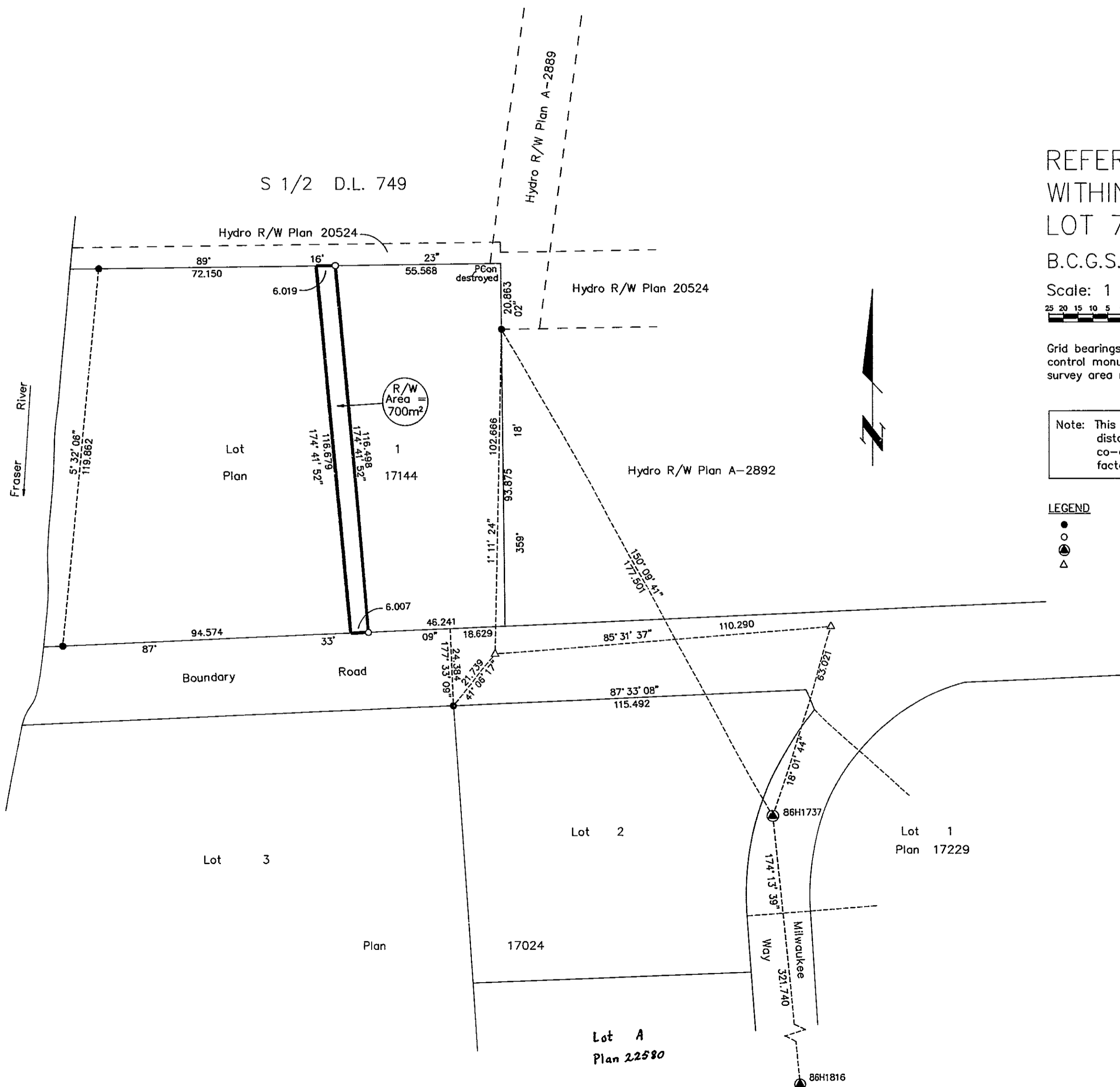


Grid bearings are derived from observations between control monuments 86H1737 and 86H1816, integrated survey area number 39, City of Prince George, B.C.

Note: This plan shows ground level measured distances. Prior to computation of U.T.M. co-ordinates multiply by the combined factor 0.9995105393

LEGEND

- Standard Iron Post Found
- Standard Iron Post Placed
- ⊙ Control Monument
- △ Traverse Hub Placed



I, Dale L. Keown, a British Columbia Land Surveyor of Prince George in British Columbia, certify that I was present at and personally superintended the survey represented by this plan and that the survey and plan are correct. The survey was completed on the 11th day of October, 1993.

*Dale Keown*

Dale L. Keown, B.C.L.S.

This plan lies within the Fraser-Fort George Regional District.

KILBRIDE LAND SURVEYING LTD. British Columbia Land Surveyors Prince George, B.C. Ph: (604) 562-1196 Fax: 562-3656		
F.B.- RA	D.L.- 749	REF. NO.- 930899