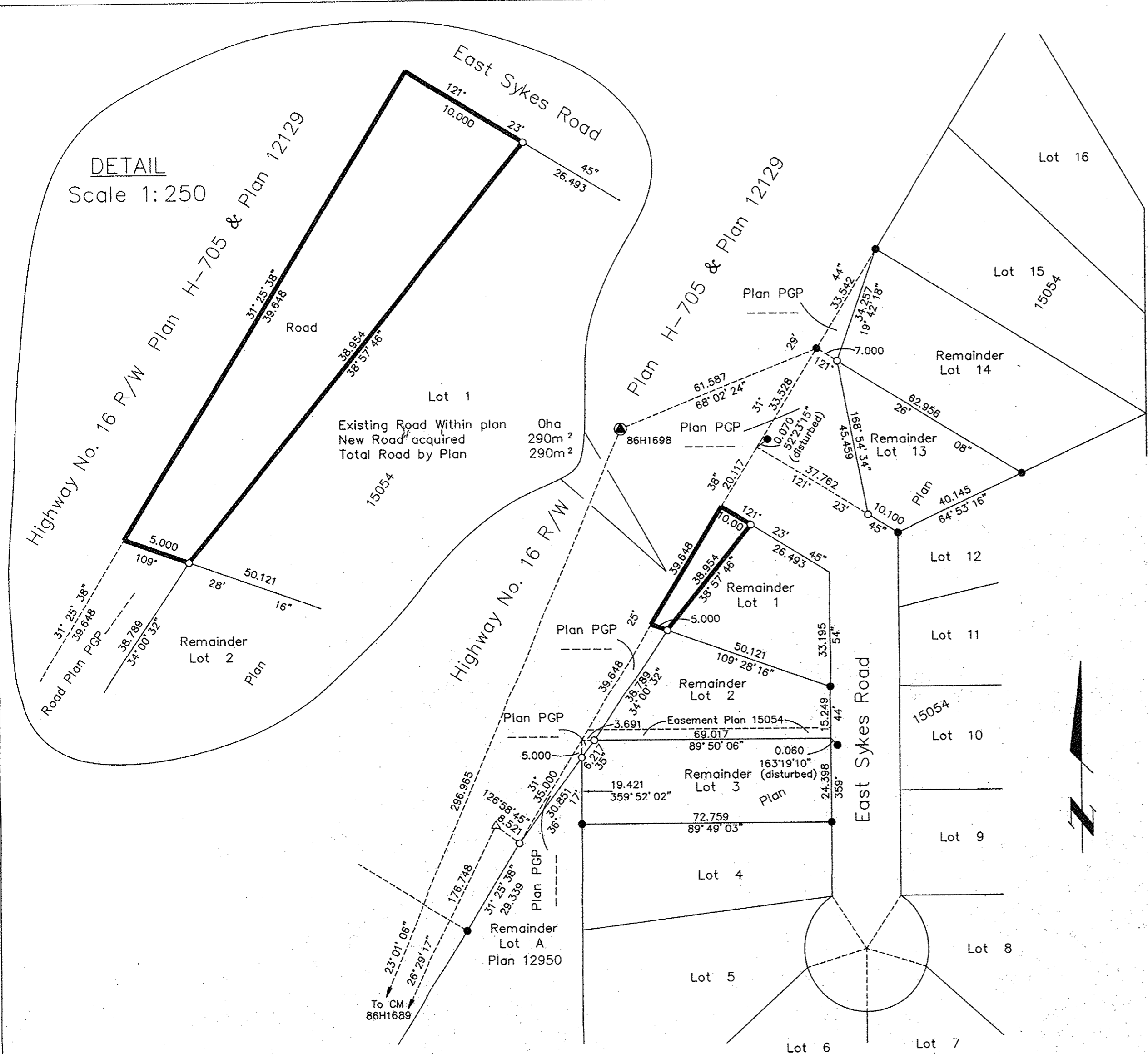


PLAN NO. PGP ~~PGP37543~~

Deposited in the Land Title Office at Prince George this 3 day of Nov 1993

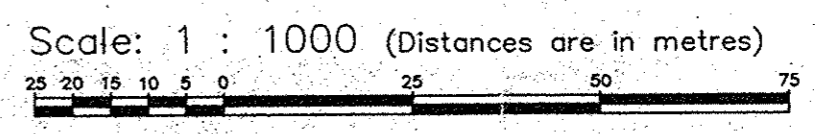
W. J. Sandy
REGISTRAR

DETAIL
Scale 1:250



Lot 46
Plan 15680

REFERENCE PLAN OF ROAD DEDICATION
WITHIN LOT 1, PLAN 15054, DISTRICT
LOT 1593, CARIBOO DISTRICT.
FOR DEPOSIT UNDER SECTION 107 OF THE
LAND TITLE ACT.
B.C.G.S. 93G.086



Grid bearings are derived from observations between control monuments 86H1689 and 86H1698, integrated survey area number 39, City of Prince George, B.C.

Note: This plan shows ground level measured distances. Prior to computation of U.T.M. co-ordinates multiply by the combined factor 0.9995105393

LEGEND

- Standard Iron Post Found
- Standard Iron Post Placed
- ⊙ Control Monument
- △ Traverse Hub Placed

I, Dale L. Keown, a British Columbia Land Surveyor of Prince George in British Columbia, certify that I was present at and personally superintended the survey represented by this plan and that the survey and plan are correct. The survey was completed on the 24th day of September, 1993.

Dale Keown
Dale L. Keown, B.C.L.S.

Owner: Lot 1, Plan 15054
HER MAJESTY THE QUEEN IN RIGHT OF THE PROVINCE OF BRITISH COLUMBIA AS REPRESENTED BY THE MINISTER OF TRANSPORTATION AND HIGHWAYS.

Authorized Signatory
Lenora Fillion
Lenora Fillion
Print Name
213-1011 4th Avenue
Address
Prince George, BC V2L 3A9
Postal Code
Steno
Occupation

This plan lies within the Fraser-Fort George Regional District.

KILBRIDE LAND SURVEYING LTD. British Columbia Land Surveyors Prince George, B.C. Ph: (604) 562-1196 Fax: 562-3656		
F.B.- RA	D.L.- 1593	REF. NO.- 930859-4