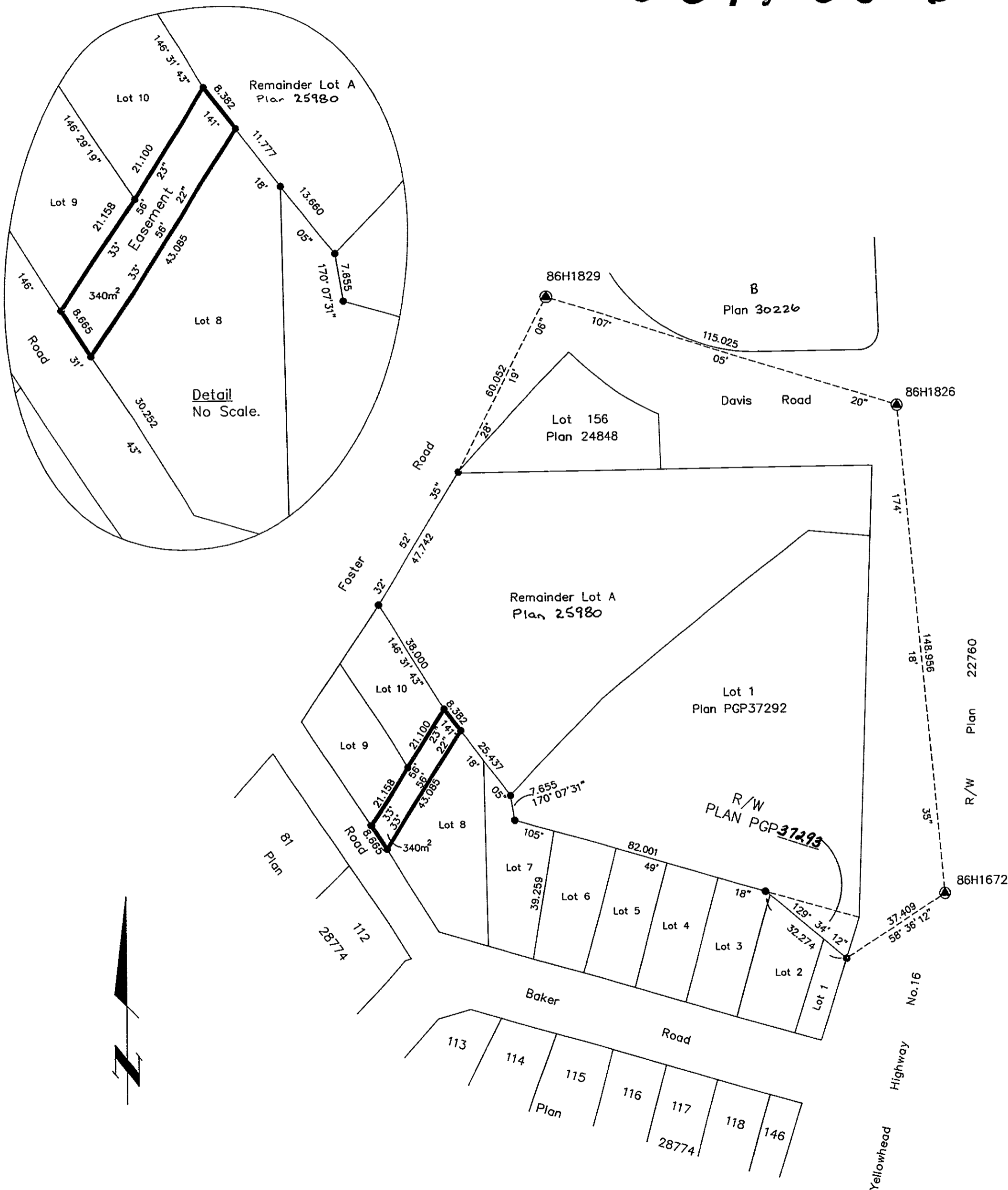


26-FF-226

PLAN NO. PGP37500

Deposited in the Land Title Office at Prince George this 4 day of OCT 1993

W. G. Gandy / dg
REGISTRAR



PLAN OF EASEMENT
WITHIN LOT 8, PLAN PGP37499,
DISTRICT LOT 2003,
CARIBOO DISTRICT.
B.C.G.S. 93G.087

Scale: 1 : 1000 (Distances are in metres)

Note: This plan shows ground level measured distances. Prior to computation of U.T.M. co-ordinates multiply by the combined factor 0.9995105393

Grid bearings are derived from observations between control monuments 86H1826 and 86H1672, integrated survey area number 39, City of Prince George, B.C.

LEGEND
● Standard Iron Post Found
⊙ Control Monument

I, Dale L. Keown, a British Columbia Land Surveyor of Prince George in British Columbia, certify that I was present at and personally superintended the survey represented by this plan and that the survey and plan are correct. The survey was completed on the 19th day of August, 1993.

Dale L. Keown
Dale L. Keown, B.C.L.S.

This plan lies within the Fraser-Fort George Regional District.

KILBRIDE LAND SURVEYING LTD.
British Columbia Land Surveyors
Prince George, B.C.
Ph: (604) 562-1196 Fax: 562-3656

F.B.- RC70-71	D.L.- 2003	REF. NO.- 930731-1
---------------	------------	--------------------