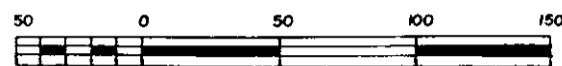


26-FF-226

REFERENCE PLAN OF EASEMENT THROUGH PART OF LOT A, DISTRICT LOT 2061, CARIBOO DISTRICT, PLAN 33603

PLAN PGP37492



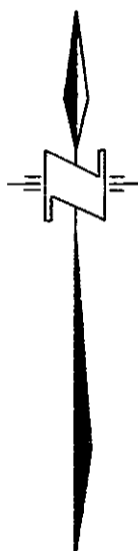
SCALE 1:2500

B.C.G.S. 93 G.097

DEPOSITED IN THE LAND TITLE OFFICE PRINCE GEORGE, B.C.

THIS 8 DAY OF Oct. 1989

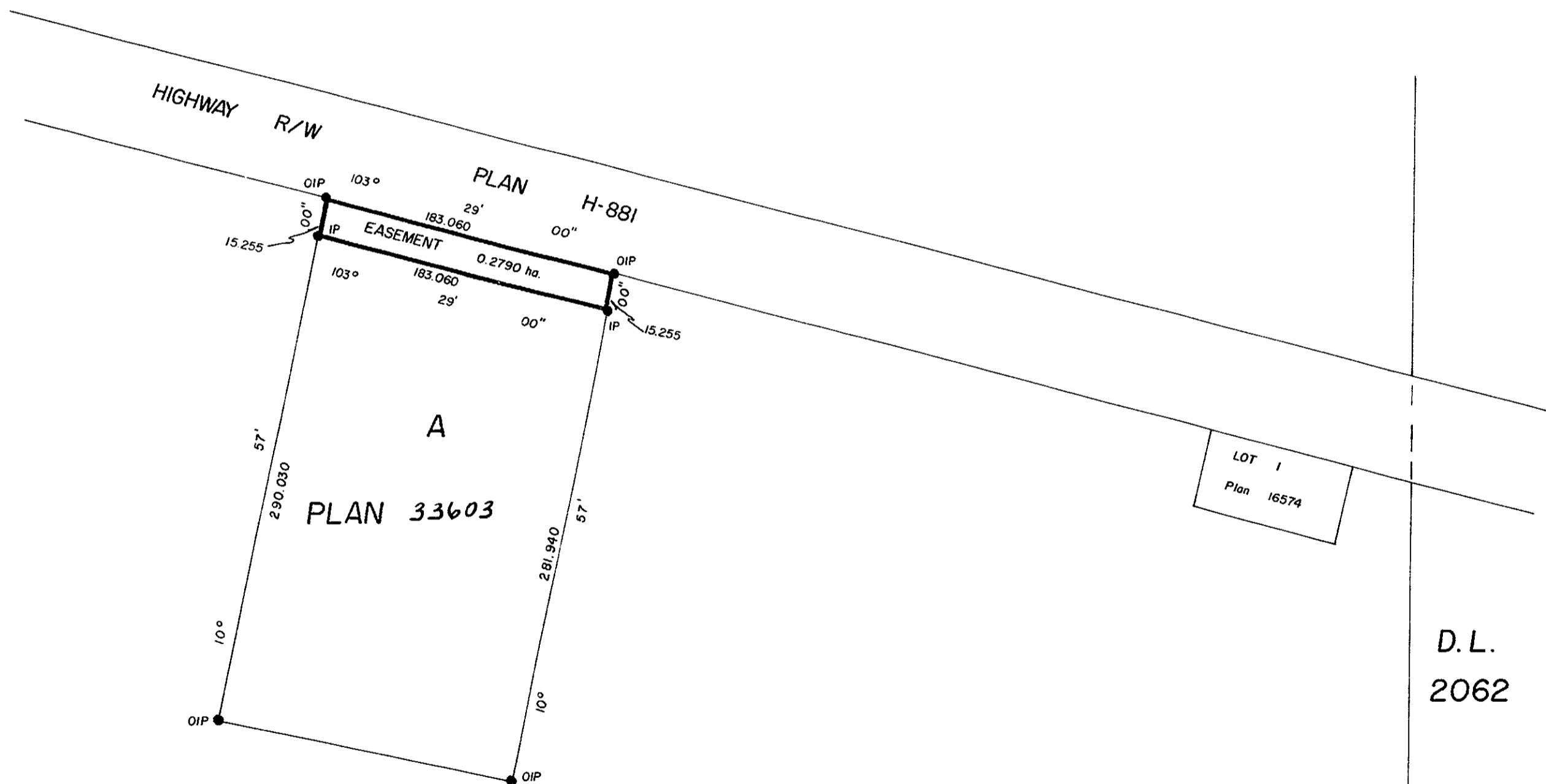
w. B. Sandy / dg REGISTRAR



LEGEND

BEARINGS ARE ASTRONOMIC DERIVED FROM PLAN H881 (103°29'00")

- OIP DENOTES OLD IRON POST FOUND
- IP DENOTES IRON POST SET



I, Harry E. HICKMAN, A BRITISH COLUMBIA LAND SURVEYOR OF PRINCE GEORGE IN BRITISH COLUMBIA, CERTIFY THAT I WAS PRESENT AT AND PERSONALLY SUPERINTENDED THE SURVEY REPRESENTED BY THIS PLAN AND THAT THE SURVEY AND PLAN ARE CORRECT. THE SURVEY WAS COMPLETED ON OCTOBER 13, 1988.

H. Hickman B.C.L.S.

APPROVED UNDER THE LAND TITLE ACT. THIS 3rd DAY OF April 1989

C. Elliot
APPROVING OFFICER - CITY OF PRINCE GEORGE

Rem. Parcel B (98037 M)

D.L. 2061

D.L. 2062