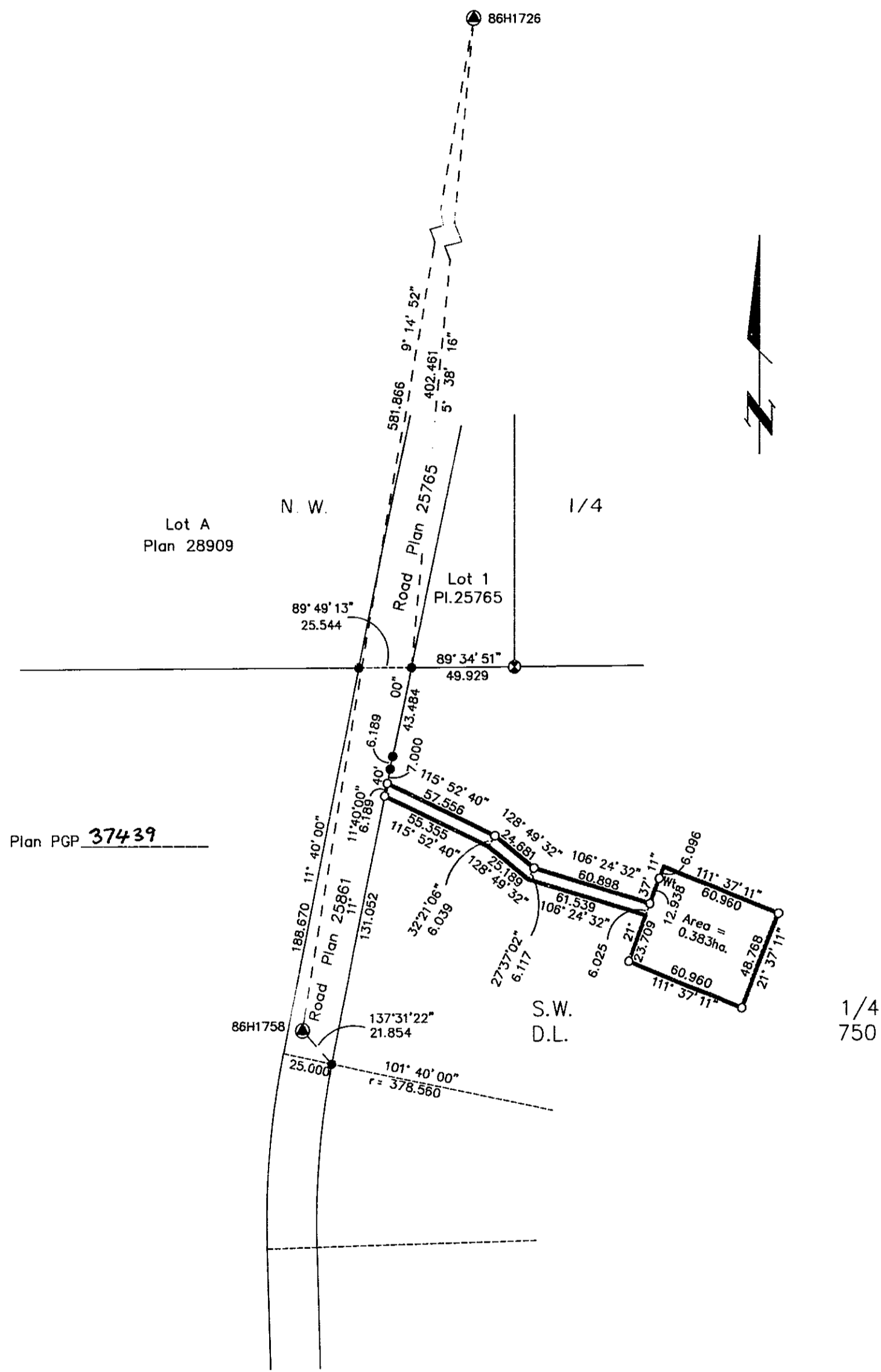


26-FF-226

PLAN NO. PGP37440

Deposited in the Land Title Office at Prince George this 15 day of SEPT. 1993

W.G. GANDY  
REGISTRAR YEN: A



REFERENCE PLAN OF EASEMENT  
WITHIN REM. S.W. 1/4 DISTRICT LOT 750,  
CARIBOO DISTRICT.  
B.C.G.S. 93G.087

Scale: 1 : 2000 (Distances are in metres)



Note: This plan shows ground level measured distances. Prior to computation of U.T.M. co-ordinates multiply by the combined factor 0.9995105393

Grid bearings are derived from observations between control monuments 86H1726 and 86H1758, integrated survey area number 39, City of Prince George, B.C.

LEGEND

- ⊙ Standard Capped Post Found
- Standard Iron Post Found
- Standard Iron Post Placed
- ⊙ Control Monument

I, Dale L. Keown, a British Columbia Land Surveyor of Prince George in British Columbia, certify that I was present at and personally superintended the survey represented by this plan and that the survey and plan are correct. The survey was completed on the 5th day of January, 1993.

*Dale Keown*

Dale L. Keown, B.C.L.S.

This plan lies within the Fraser-Fort George Regional District.

<b>KILBRIDE SURVEYS</b> British Columbia Land Surveyors Prince George, B.C. Ph: (604) 562-1196 Fax: 562-3656		
F.B.- RA	D.L.- 750	REF. NO.- 91782RW

NRS - 14/03/93 - ac