

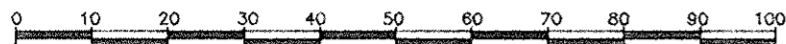
REFERENCE PLAN TO ACCOMPANY
A RESTRICTIVE COVENANT OVER
PART OF REMAINDER OF LOT 5
PLAN 27071, DISTRICT LOT 4040
CARIBOO DISTRICT
B.C.G.S. 93G.097

PLAN No. PGP **PGP37381**

DEPOSITED IN THE LAND TITLE OFFICE
AT PRINCE GEORGE, B.C., THIS 30
DAY OF Aug, 19 93.

REGISTRAR W.B.

SCALE 1 : 1000 (ALL DISTANCES ARE SHOWN IN METRES)



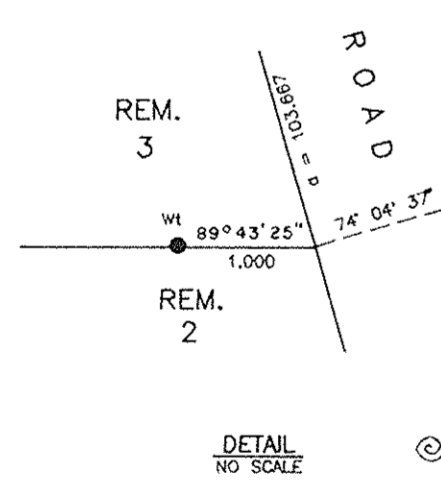
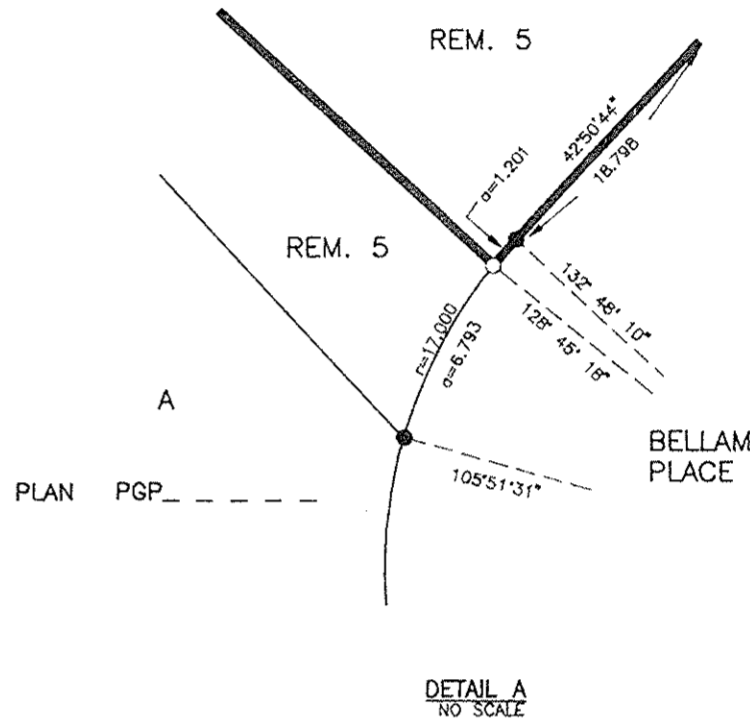
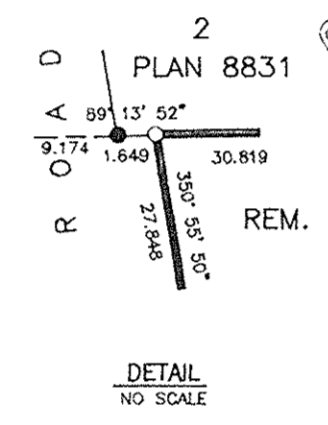
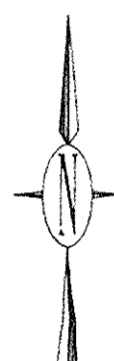
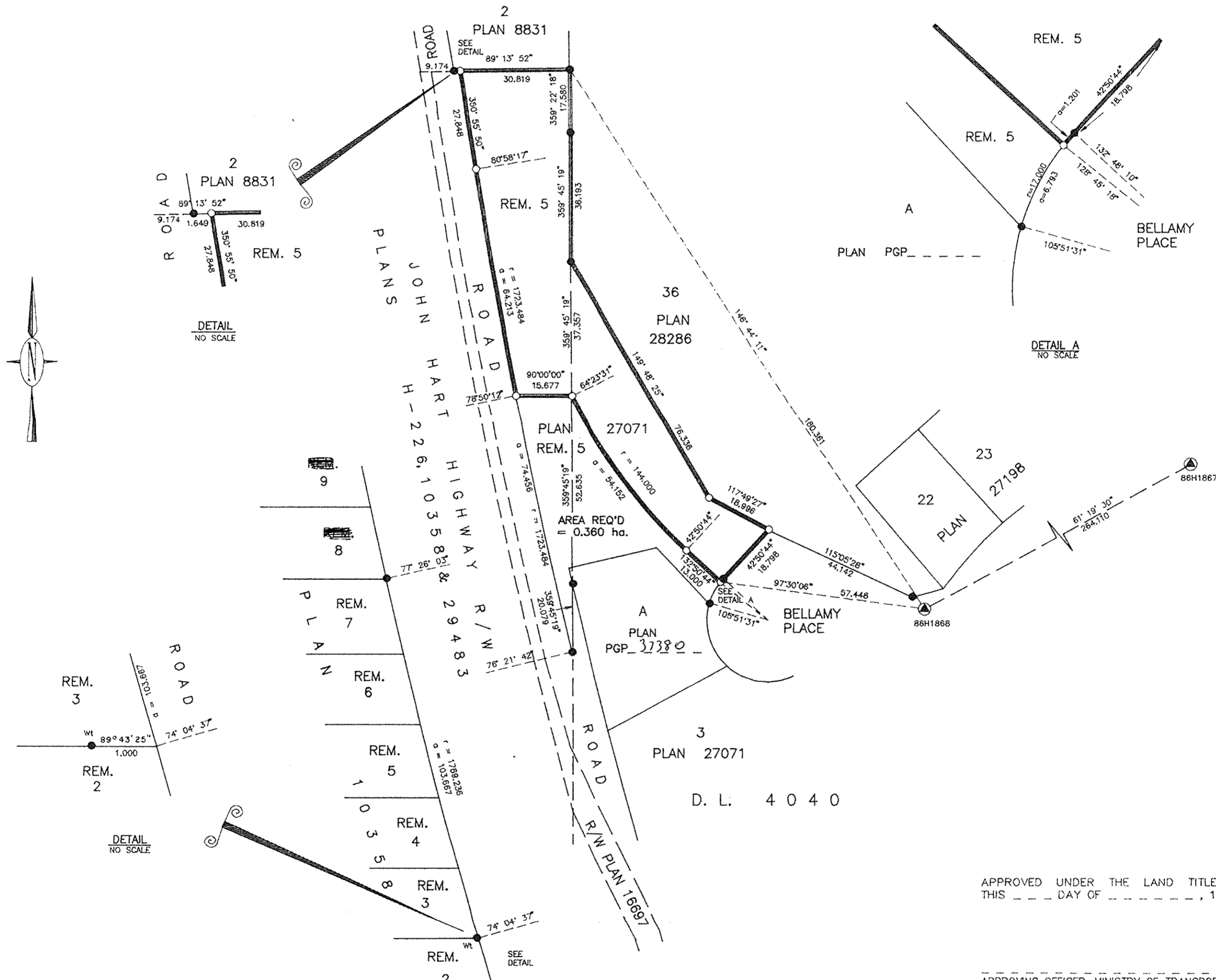
GRID BEARINGS ARE DERIVED FROM OBSERVATIONS
BETWEEN CONTROL MONUMENTS 86H1867 AND 86H1868,
INTEGRATED SURVEY AREA NUMBER 39.

THIS PLAN SHOWS GROUND-LEVEL MEASURED DISTANCES.
PRIOR TO COMPUTATION OF U.T.M. COORDINATES,
MULTIPLY BY COMBINED FACTOR 0.9995105393.

LEGEND

- ⊙ CONTROL MONUMENT
- STANDARD IRON POST FOUND
- STANDARD IRON POST PLACED

D. L. 4040



APPROVED UNDER THE LAND TITLE ACT
THIS ___ DAY OF ___, 19 __

APPROVING OFFICER, MINISTRY OF TRANSPORTATION
& HIGHWAYS.

APPROVED UNDER THE LAND TITLE ACT
THIS 11 DAY OF August, 19 93

George Halliday
APPROVING OFFICER, CITY OF PRINCE GEORGE.

I, RONALD L. JOHNS, A BRITISH COLUMBIA LAND SURVEYOR, OF PRINCE GEORGE, IN BRITISH COLUMBIA, CERTIFY THAT I WAS PRESENT AT AND PERSONALLY SUPERINTENDED THE SURVEY REPRESENTED BY THIS PLAN AND THAT THE SURVEY AND PLAN ARE CORRECT. THE SURVEY WAS COMPLETED ON THE 21ST DAY OF MAY, 1993.

R.L. Johns
R.L. JOHNS, B.C.L.S.

THIS PLAN LIES WITHIN THE FRASER-FORT GEORGE REGIONAL DISTRICT.

R.L. JOHNS & ASSOCIATES
LEGAL AND ENGINEERING SURVEYS
240 VICTORIA STREET
PRINCE GEORGE, B.C. V2L 2J4
PHONE: (604) 562-5759
FAX: (604) 562-5703