

REFERENCE PLAN OF PART OF PARCEL B (P2814),
BLOCK 125, PLAN 1268, AND PART OF PARCEL E (P2814D),
BLOCK 126, PLAN 1268, DISTRICT LOT 343,
CARIBOO DISTRICT, FOR ROAD DEDICATION.

PLAN NO. PGP
PGP37328

Deposited in the Land Title Office at
Prince George this 12 day of Aug 1993

Registrar

B.C.S. 93 G. 097

FOR DEPOSIT UNDER SECTION 107 OF THE LAND TITLE ACT.

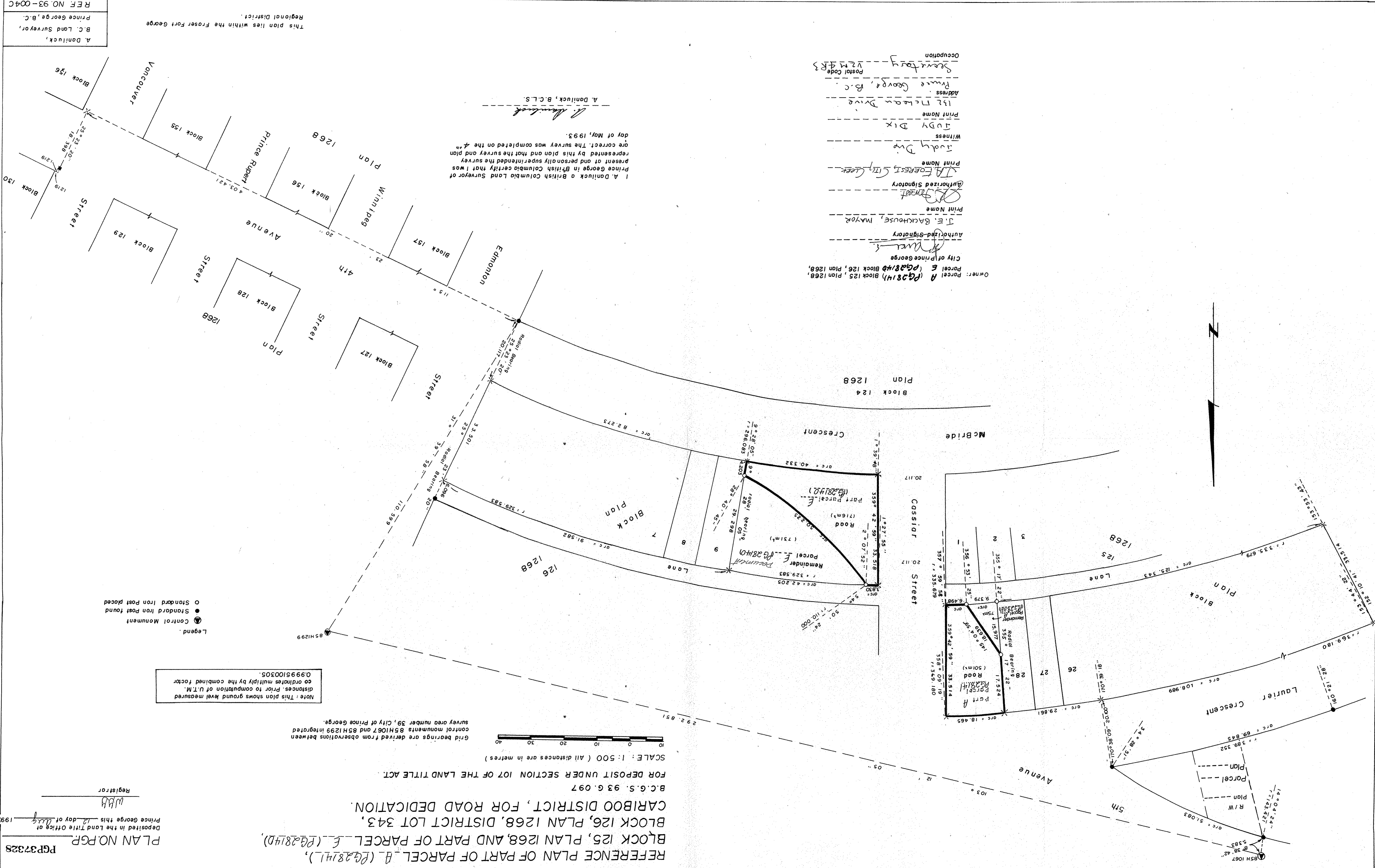
SCALE: 1:500 (All distances are in metres)



Grid bearings are derived from observations between
control monuments B5H1067 and B5H1299 integrated
survey area number 39, City of Prince George.

Note: This plan shows ground level measured
distances. Prior to computation of U.T.M.
coordinates multiply by the combined factor
0.9995100305.

- Legend.
- Control Monument
 - Standard Iron Post found
 - Standard Iron Post placed



Owner: Parcel A (P2814) Block 125, Plan 1268,
Parcel E (P2814D) Block 126, Plan 1268,
City of Prince George
Print Name: J.E. Backhouse, Mayor
Authorized Signatory: [Signature]
Print Name: JUDY DIX
Witness: JUDY DIX
Print Name: JUDY DIX
Occupation: Secretary
Postal Code: V2M 4R3

I, A. Daniluck a British Columbia Land Surveyor of
Prince George in British Columbia certify that I was
present at and personally supervised the survey
represented by this plan and that the survey and plan
are correct. The survey was completed on the 4th
day of May, 1993.
A. Daniluck, B.C.L.S.

A. Daniluck,
B.C. Land Surveyor,
Prince George, B.C.
REF. NO. 93-004C
This plan lies within the Fraser Fort George
Regional District.