

26-FF

EXPLANATORY PLAN OF STATUTORY RIGHT OF WAY THROUGH PART OF LOTS 44 AND 65, DISTRICT LOT 754, CARIBOO DISTRICT, PLAN 10486.

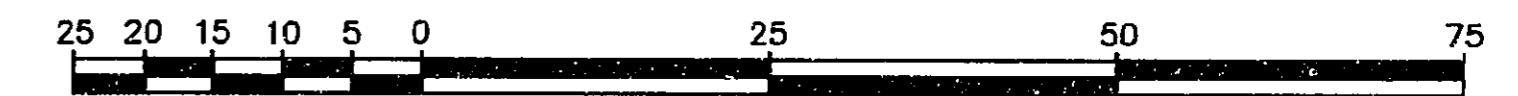
B.C.G.S. 93G.087

PLAN NO. PGP 37311

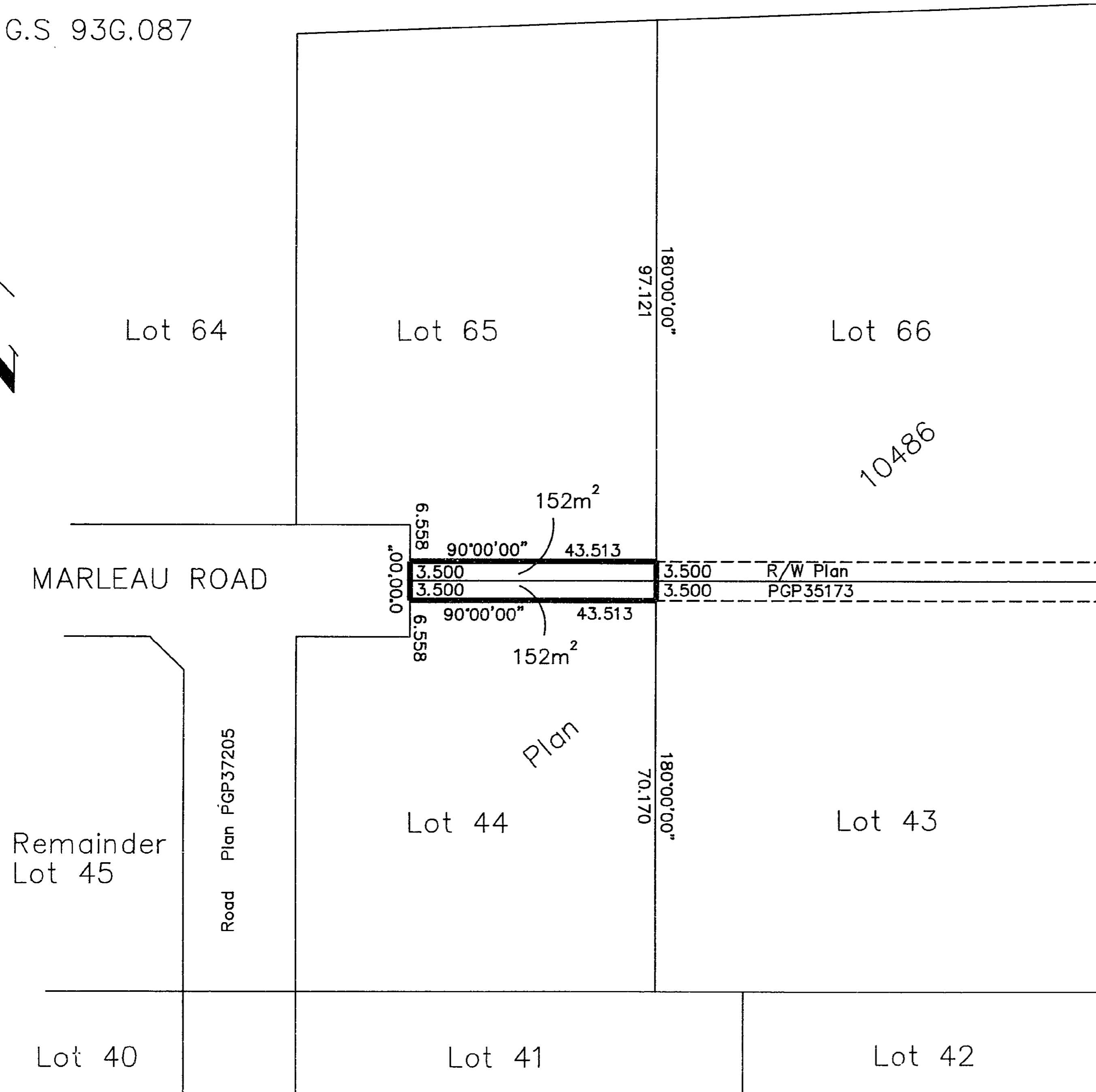
Deposited in the Land Title Office at Prince George this 06 day of AUG. 1993

W.G. GANDY
REGISTRAR *pen: ac*

Scale: 1 : 1000 (Distances are in metres)



BEARINGS ARE ASTRONOMIC DERIVED FROM PLAN 10486.



BOOK OF REFERENCE	
DESCRIPTION	AREA
Lot 65, D.L. 754, Plan 10486	152m ²
Lot 44, D.L. 754, Plan 10486	152m ²

Certified Correct
According to Land Title Office
Records. This 22nd day of
July, 1993.

Gordon Kilbride
Gordon Kilbride, B.C.L.S.

This plan lies within the Fraser-Fort George Regional District.

KILBRIDE LAND SURVEYING LTD.
British Columbia Land Surveyors
Prince George, B.C.
Ph: (604) 562-1196 Fax: 562-3656

F.B.-	D.L.- 754	REF. NO.- 930668
-------	-----------	------------------