

REFERENCE PLAN OF ROAD DEDICATION
 WITHIN LOT 40, PLAN 10486, DISTRICT
 LOT 754, CARIBOO DISTRICT.

B.C.G.S. 93G.087

Scale: 1 : 1000 (Distances are in metres)



Grid bearings are derived from observations between control monuments 86H1835 and 86H1546, integrated survey area number 39, City of Prince George, B.C.

LEGEND

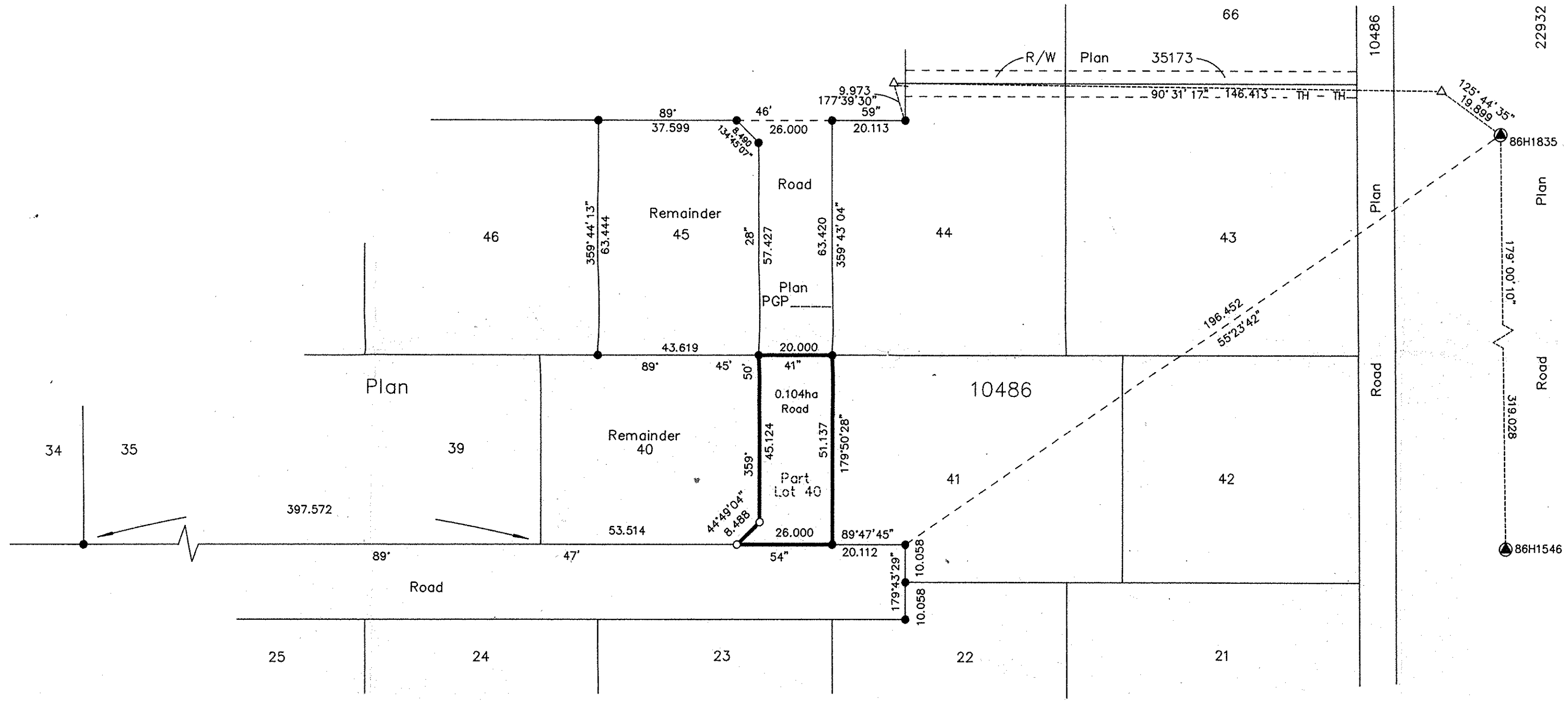
- Standard Iron Post Found
- Standard Iron Post Placed
- ⊙ Control Monument
- △ Traverse Hub Placed

Note: This plan shows ground level measured distances. Prior to computation of U.T.M. co-ordinates multiply by the combined factor 0.9995105393

PLAN NO. PGP PGP37305

Deposited in the Land Title Office at Prince George this 4 day of Aug 1993.

REGISTRAR W.G.



Owner: Lot 40, Plan 10486, D.L. 754, Cariboo District.

Russell Arthur Emsky
 Russell Arthur Emsky
Joyce Thereso Emsky
 Joyce Thereso Emsky

Ronald F. Kennedy
 Witness to both.
 Ronald F. Kennedy
 Print Name
640 TAY CRESCENT
 Address
PRINCE GEORGE B.C. V2M 3V2
 Postal Code
APPRAISER
 Occupation

Approved under the Land Title Act this 20 day of July, 1993
Dale L. Keown
 Approving Officer
 City of Prince George.

I, Dale L. Keown, a British Columbia Land Surveyor of Prince George in British Columbia, certify that I was present at and personally superintended the survey represented by this plan and that the survey and plan are correct. The survey was completed on the 29th day of June, 1993.

Dale L. Keown
 Dale L. Keown, B.C.L.S.

This plan lies within the Fraser-Fort George Regional District.

KILBRIDE LAND SURVEYING LTD. British Columbia Land Surveyors Prince George, B.C. Ph: (604) 562-1196 Fax: 562-3656		
F.B.- TU68	D.L.- 754	REF. NO.- 930532