

26-226-FF

PLAN NO. PGP 37296

POSTING PLAN OF LOTS 1-4 INCLUSIVE,
BLOCK 137, PLAN 1268, DISTRICT LOT 343
CARIBOO DISTRICT.
B.C.G.S. 93G.097

Deposited in the Land Title Office at Prince
George this 30 day of July 1993

REGISTRAR

Scale: 1 : 1250 (Distances are in metres)

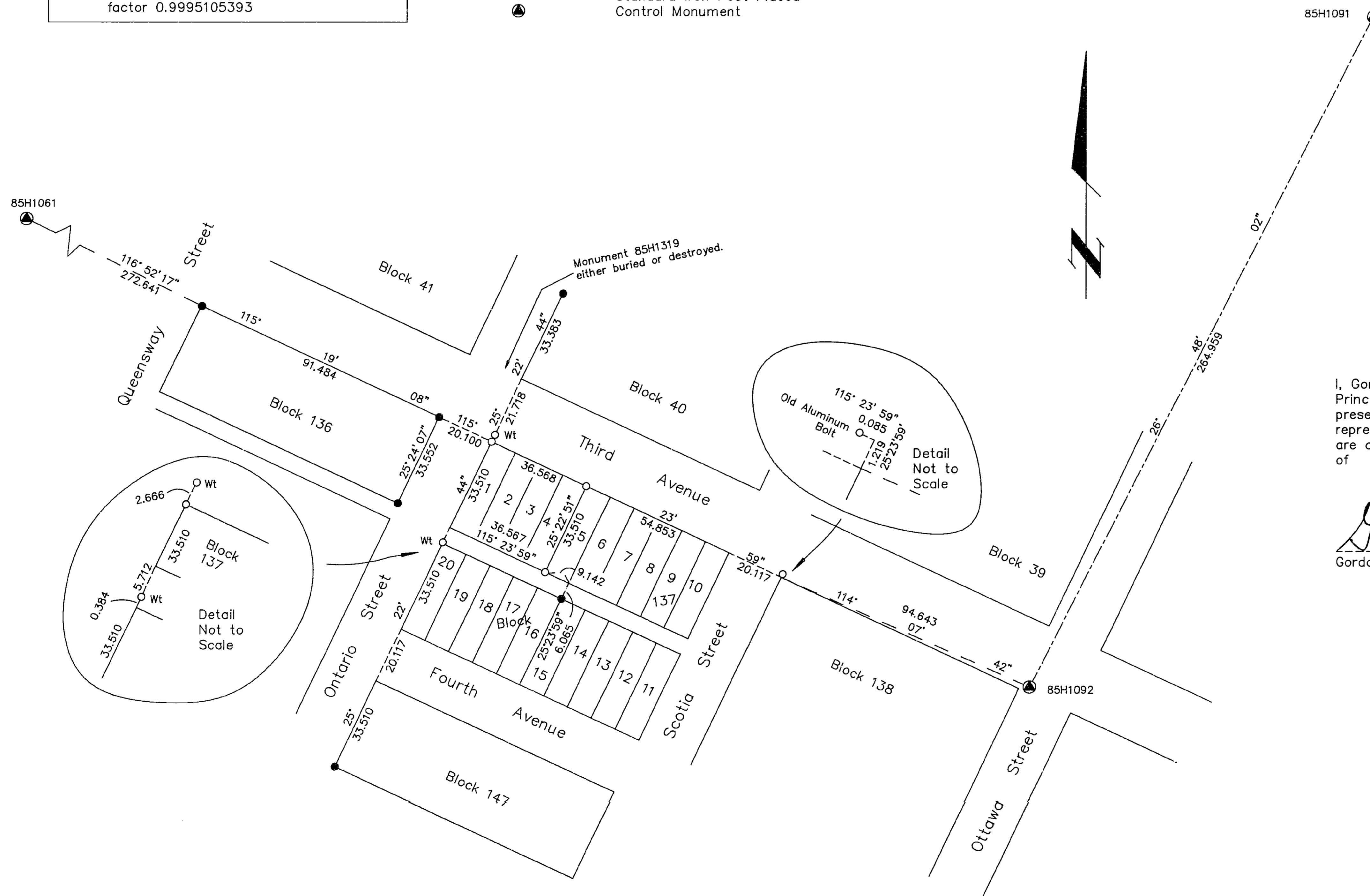


Grid bearings are derived from observations between
control monuments 85H1092 and 85H1091, integrated
survey area number 39, City of Prince George, B.C.

Note: This plan shows ground level measured
distances. Prior to computation of U.T.M.
co-ordinates multiply by the combined
factor 0.9995105393

LEGEND

- Standard Iron Post Found
- Standard Iron Post Placed
- ⊙ Control Monument



I, Gordon Kilbride, a British Columbia Land Surveyor of
Prince George in British Columbia, certify that I was
present at and personally superintended the survey
represented by this plan and that the survey and plan
are correct. The survey was completed on the 15th day
of June, 1993.

Gordon Kilbride
Gordon Kilbride, B.C.L.S.

This plan lies within the Fraser-Fort
George Regional District.

KILBRIDE LAND SURVEYING LTD.		
British Columbia Land Surveyors		
Prince George, B.C.		
Ph: (604) 562-1196 Fax: 562-3656		
F.B.- TI 37	D.L.- 343(137)	REF. NO.- 930463