

REFERENCE PLAN OF REMAINDER OF
 LOT 1, PLAN 26941
DISTRICT LOT 2507
 CARIBOO DISTRICT
 PURSUANT TO SEC. 100 (1) (a), LAND TITLE ACT.

PLAN No. PGP 37258

DEPOSITED IN THE LAND TITLE OFFICE
 AT PRINCE GEORGE, B.C., THIS 13
 DAY OF July, 1993.

REGISTRAR W. G. G.

SCALE = 1 : 1000 B.C.G.S. 93G.096



DISTANCES ARE SHOWN IN METRES.

THIS PLAN SHOWS GROUND-LEVEL MEASURED DISTANCES.
 PRIOR TO COMPUTATION OF U.T.M. COORDINATES,
 MULTIPLY BY COMBINED FACTOR 0.9995105393.

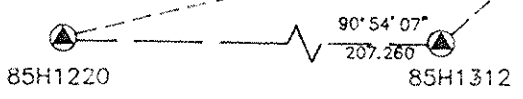
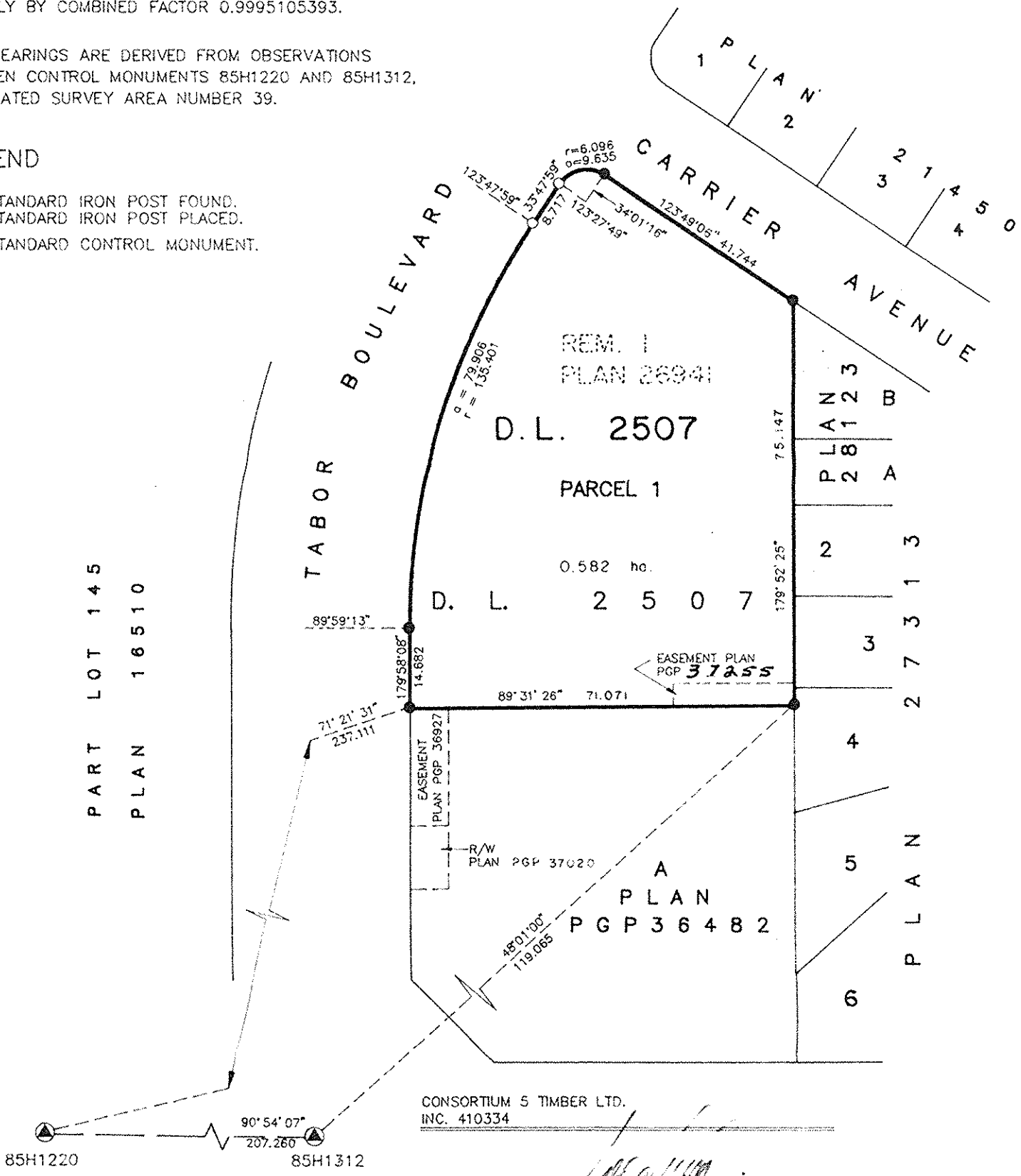
GRID BEARINGS ARE DERIVED FROM OBSERVATIONS
 BETWEEN CONTROL MONUMENTS 85H1220 AND 85H1312,
 INTEGRATED SURVEY AREA NUMBER 39.

LEGEND

- STANDARD IRON POST FOUND.
- STANDARD IRON POST PLACED.
- ⊙ STANDARD CONTROL MONUMENT.



PART LOT 145
 PLAN 16510



CONSORTIUM 5 TIMBER LTD.
 INC. 410334

AUTHORIZED SIGNATORY [Signature]
 PRINT NAME JOE CHUNG NG

WITNESS [Signature]
 PRINT NAME R. E. SHIER

ADDRESS 240 VICTORIA ST.
PRINCE GEORGE, B.C.

OCCUPATION LAND SURVEY TECHNOLOGIST

I, RONALD L. JOHNS, A BRITISH COLUMBIA LAND SURVEYOR, OF PRINCE GEORGE, IN BRITISH COLUMBIA, CERTIFY THAT I WAS PRESENT AT AND PERSONALLY SUPERINTENDED THE SURVEY REPRESENTED BY THIS PLAN AND THAT THE SURVEY AND PLAN ARE CORRECT. THE SURVEY WAS COMPLETED ON THE 9 TH DAY OF JUNE, 1993.

[Signature]
 R.L. JOHNS, B.C.L.S.

THIS PLAN LIES WITHIN THE FRASER-FORT GEORGE REGIONAL DISTRICT.

R.L. JOHNS & ASSOCIATES
 LEGAL AND ENGINEERING SURVEYS
 240 VICTORIA STREET
 PRINCE GEORGE, B.C. V2L 2J4
 (604) 562-5759

HI-25
 NS-12-16