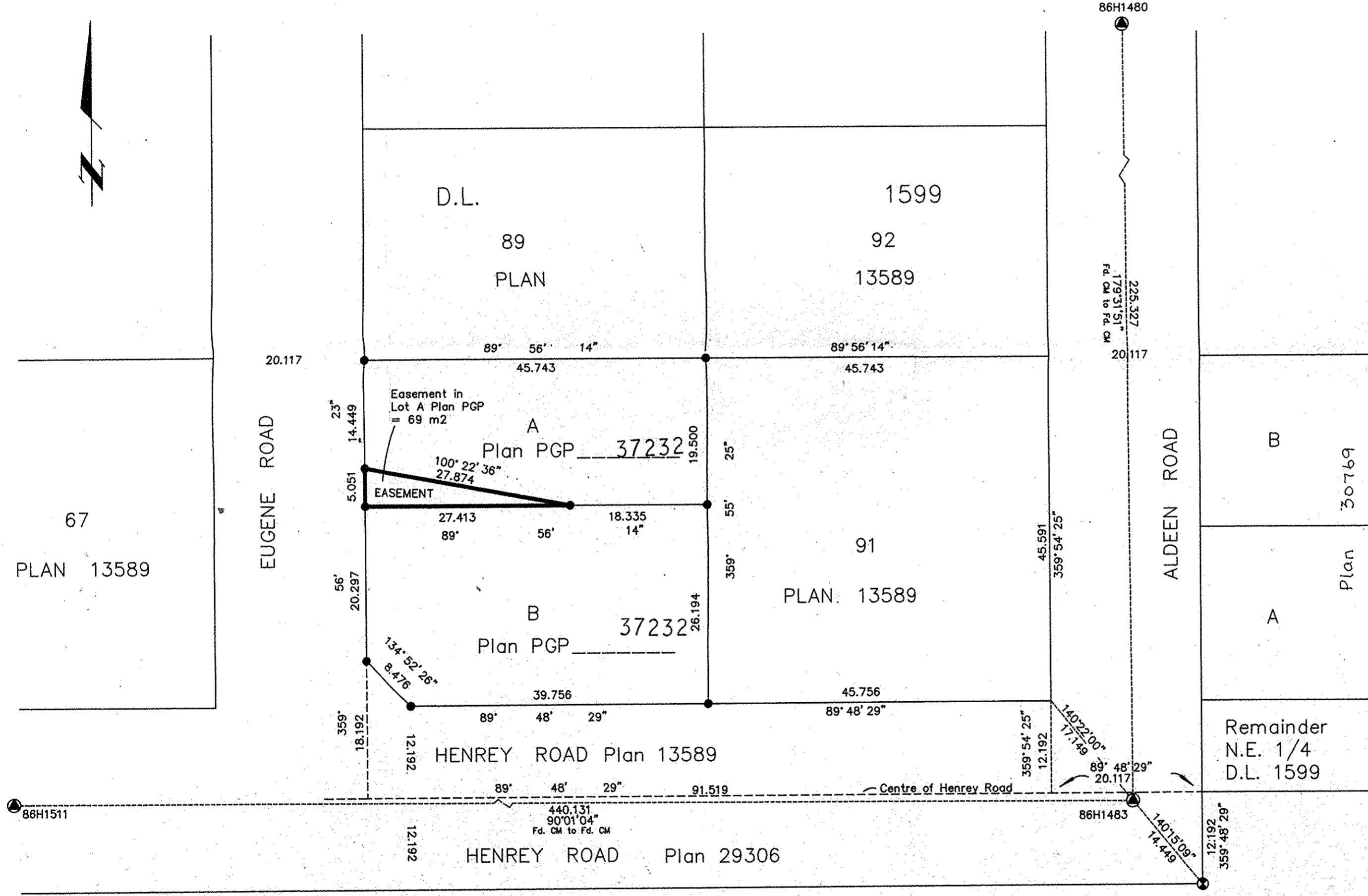


PLAN NO. PGP 37233

Deposited in the Land Title Office at Prince George this 27 day of June 1993

WGG
REGISTRAR



PLAN of EASEMENT in
LOT A PLAN PGP 37232
DISTRICT LOT 1599
CARIBOO DISTRICT
B.C.G.S. 93G.086

Scale: 1 : 500 (Distances are in metres)

Grid bearings are derived from observations between control monuments 86H1483 and 86H1511, integrated survey area number 39, City of Prince George, B.C.

LEGEND

- Standard Capped Post Found
- Standard Iron Post Found
- Standard Iron Post Placed
- Control Monument

I, Dale L. Keown, a British Columbia Land Surveyor of Prince George in British Columbia, certify that I was present at and personally supervised the survey represented by this plan and that the survey and plan are correct. The survey was completed on the 27 day of May, 1993.

Dale Keown
Dale L. Keown, B.C.L.S.

Remainder S.E. 1/4 D.L. 1599

This plan lies within the Fraser-Fort George Regional District.

Note: This plan shows ground level measured distances. Prior to computation of U.T.M. co-ordinates multiply by the combined factor 0.9995105393

KILBRIDE SURVEYS
British Columbia Land Surveyors
Prince George.
Ph: (604) 562-1196
F.B.- RA D.L.- 1599