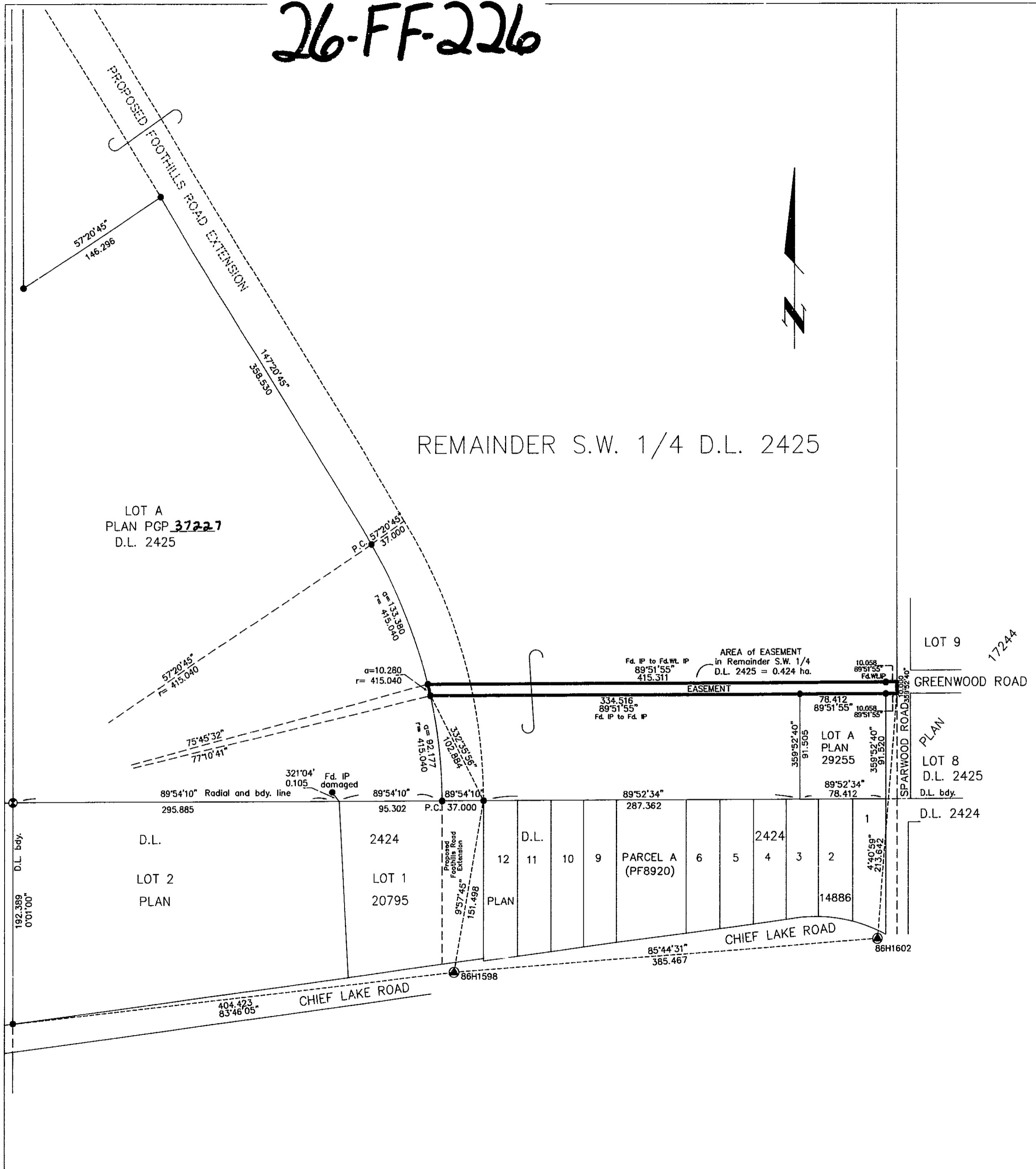


26-FF-226

PLAN NO. PGP37228

Deposited in the Land Title Office at Prince George this 25th day of June 1993

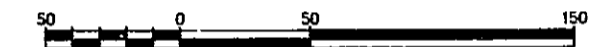
W. G. Sandy
REGISTRAR



PLAN of EASEMENT
in PART of the REMAINDER
of the S.W. 1/4 of
DISTRICT LOT 2425
CARIBOO DISTRICT

B.C.G.S. 93J.006

Scale: 1 : 2500 (Distances are in metres)



Grid bearings are derived from observations between control monuments 86H1598 and 86H1602, integrated survey area number 39, City of Prince George, B.C.

LEGEND

- Standard Iron Post Found
- Standard Iron Post Placed
- ⊙ Control Monument
- ⊗ Standard Capped Post Found

Note: This plan shows ground level measured distances. Prior to computation of U.T.M. co-ordinates multiply by the combined factor 0.9995105393

I, Dale L. Keown, a British Columbia Land Surveyor of Prince George in British Columbia, certify that I was present at and personally superintended the survey represented by this plan and that the survey and plan are correct. The survey was completed on the 20 day of May, 1993.

Dale L. Keown
Dale L. Keown, B.C.L.S.

This plan lies within the Fraser-Fort George Regional District.

KILBRIDE SURVEYS		
British Columbia Land Surveyors		
Prince George, B.C.		
Ph: (604) 562-1196 Fax: 562-3656		
F.B.-	D.L.- 2425	REF. NO.- 930127E