

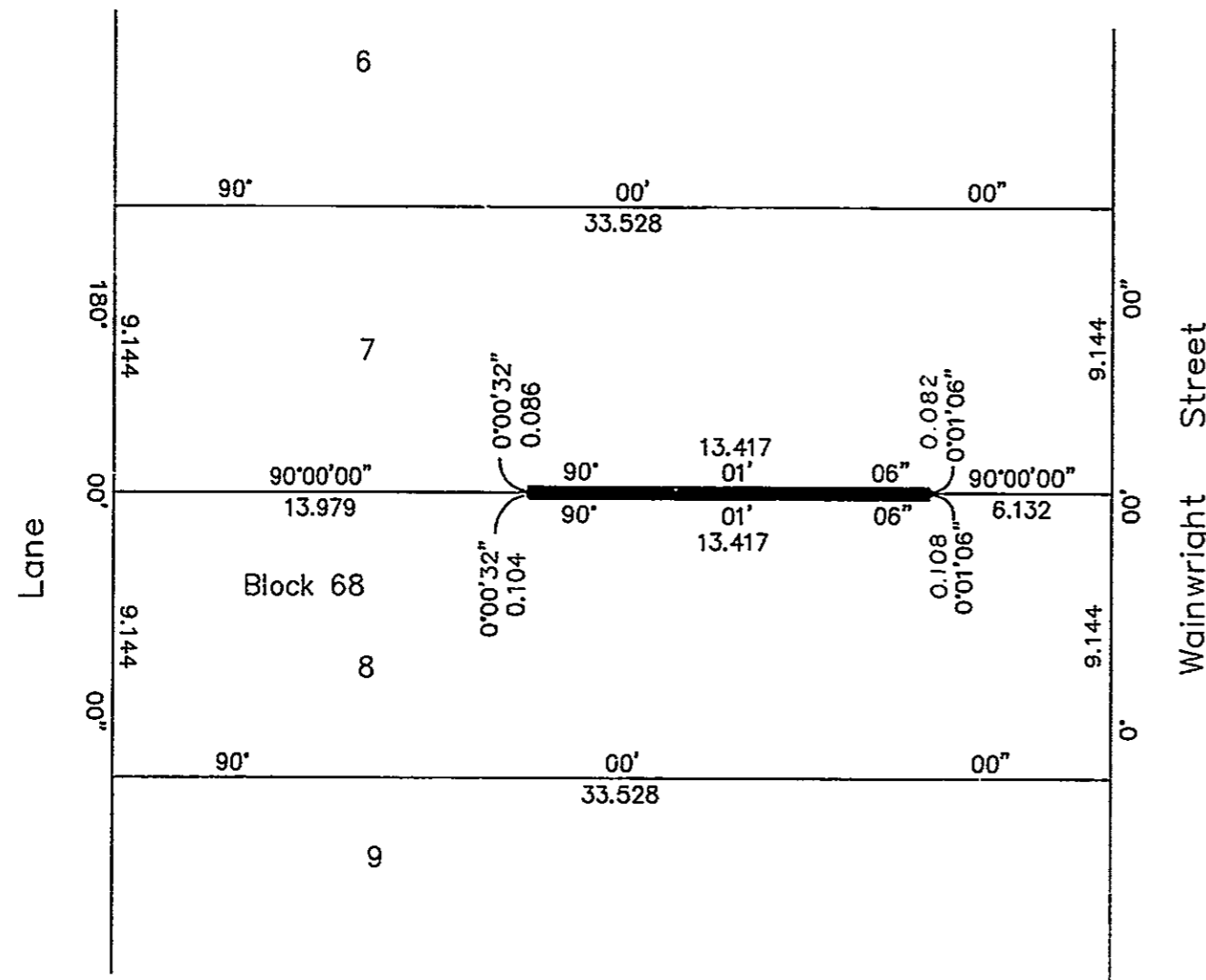
# 26-FF-226

## PLAN NO. PGP37105

Deposited in the Land Title Office at Prince George this 7 day of **MAY** 1993.

\_\_\_\_\_  
*W. S. Handy*  
REGISTRAR

EXPLANATORY PLAN OF EASEMENT  
TO ACCOMPANY A PARTY WALL  
AGREEMENT ON LOTS 7 AND 8,  
BLOCK 68, PLAN 1268,  
DISTRICT LOT 343, CARIBOO DISTRICT.  
B.C.G.S. 93G.097



Scale: 1 : 250 (Distances are in metres)



CERTIFIED CORRECT  
according to Land Title Office  
records and field measurements  
this 29th day of March, 1993.

*Gordon Kilbride*  
Gordon Kilbride, B.C.L.S.

This plan lies within the Fraser Fort  
George Regional District.

<b>KILBRIDE SURVEYS</b> <i>British Columbia Land Surveyors</i> Prince George, B.C. Ph: (604) 562-1196 Fax: 562-3656		
F.B.- RC 31	D.L.- 343(68)	REF. NO.- 930180