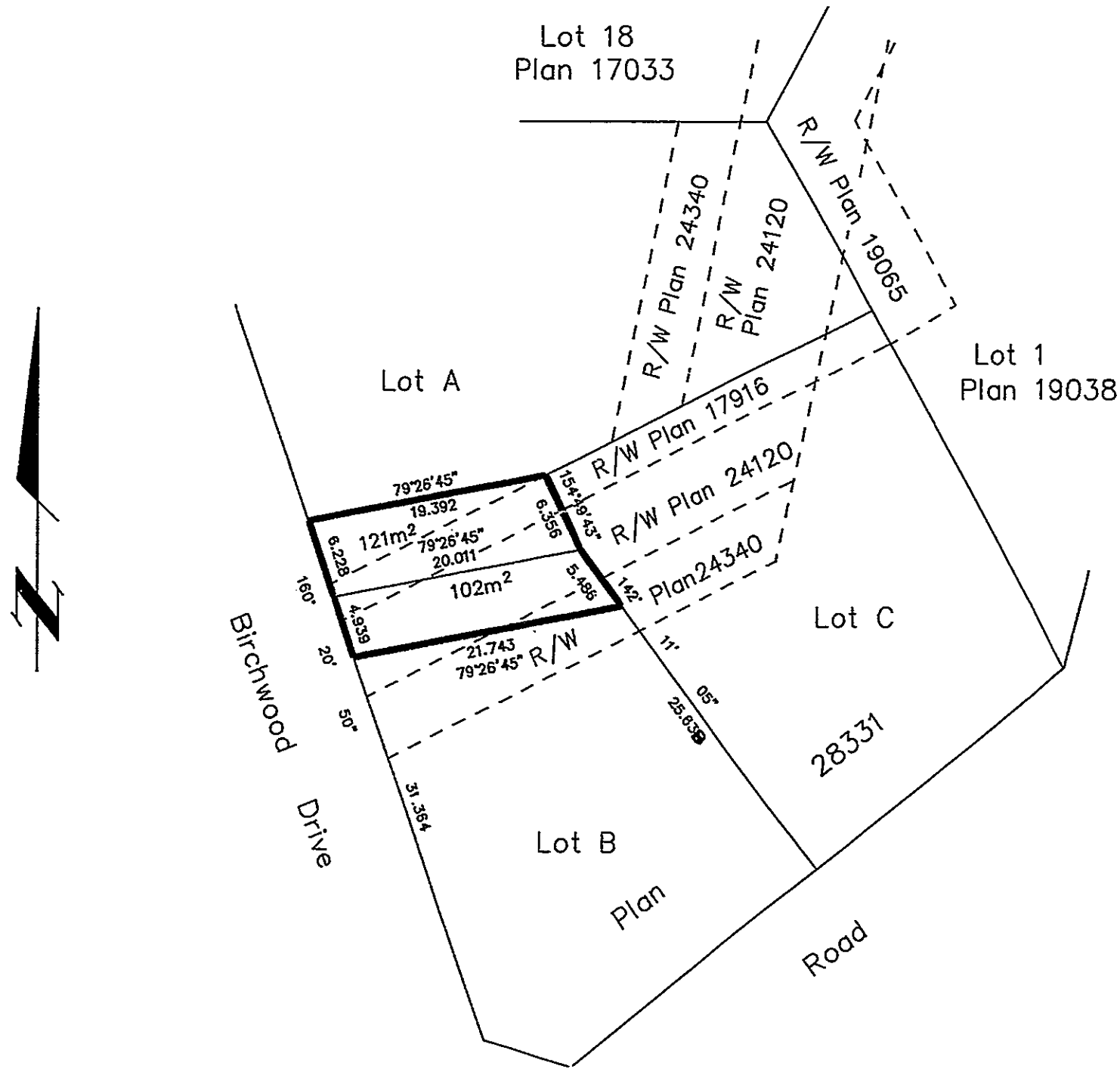


26-FF-226

PLAN NO. PGP37099

Deposited in the Land Title Office at Prince George this 4 day of MAY 1993.

----- *W. G. Handy* -----  
 REGISTRAR  
*REV - y*



EXPLANATORY PLAN OF  
 EASEMENT WITHIN  
 LOTS B AND C, PLAN 28331,  
 DISTRICT LOT 4047, CARIBOO DISTRICT.  
 B.C.G.S. 93G.097

Scale: 1 : 500 (Distances are in metres)

Certified Correct  
 according to Land Title Office Records  
 this 30th day of March, 1992.

*Gordon Kilbride*  
 Gordon Kilbride, B.C.L.S.

BOOK OF REFERENCE	
DESCRIPTION	AREA
Lot B, Plan 28331	102m <sup>2</sup>
Lot C, Plan 28331	121m <sup>2</sup>

This plan lies within the Fraser-Fort George Regional District.

<b>KILBRIDE SURVEYS</b> British Columbia Land Surveyors Prince George, B.C. Ph: (604) 562-1196 Fax: 562-3656		
F.B.-	D.L.- 4047	REF. NO.- 92256