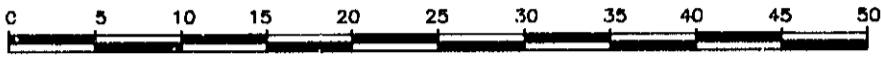


PLAN OF STATUTORY RIGHT OF WAY THROUGH
LOT A, PLAN PGP36482
DISTRICT LOT 2507
 CARIBOO DISTRICT

PLAN No. PGP 37020

DEPOSITED IN THE LAND TITLE OFFICE
 AT PRINCE GEORGE, B.C., THIS 1st
 DAY OF April, 1993.

SCALE = 1 : 500 B.C.G.S. 93G.096



W. G. Handy
 REGISTRAR
see RH

DISTANCES ARE SHOWN IN METRES.

LEGEND

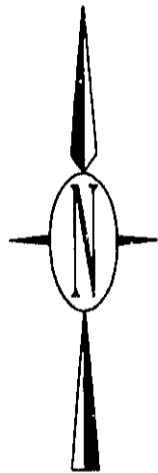
- STANDARD IRON POST FOUND.
- STANDARD IRON POST SET.
- ⊙ STANDARD CONTROL MONUMENT.

THIS PLAN SHOWS GROUND-LEVEL MEASURED DISTANCES.
 PRIOR TO COMPUTATION OF U.T.M. COORDINATES,
 MULTIPLY BY COMBINED FACTOR 0.9995105393.

GRID BEARINGS ARE DERIVED FROM OBSERVATIONS
 BETWEEN CONTROL MONUMENTS 85H1220 AND 85H1312,
 INTEGRATED SURVEY AREA NUMBER 39.

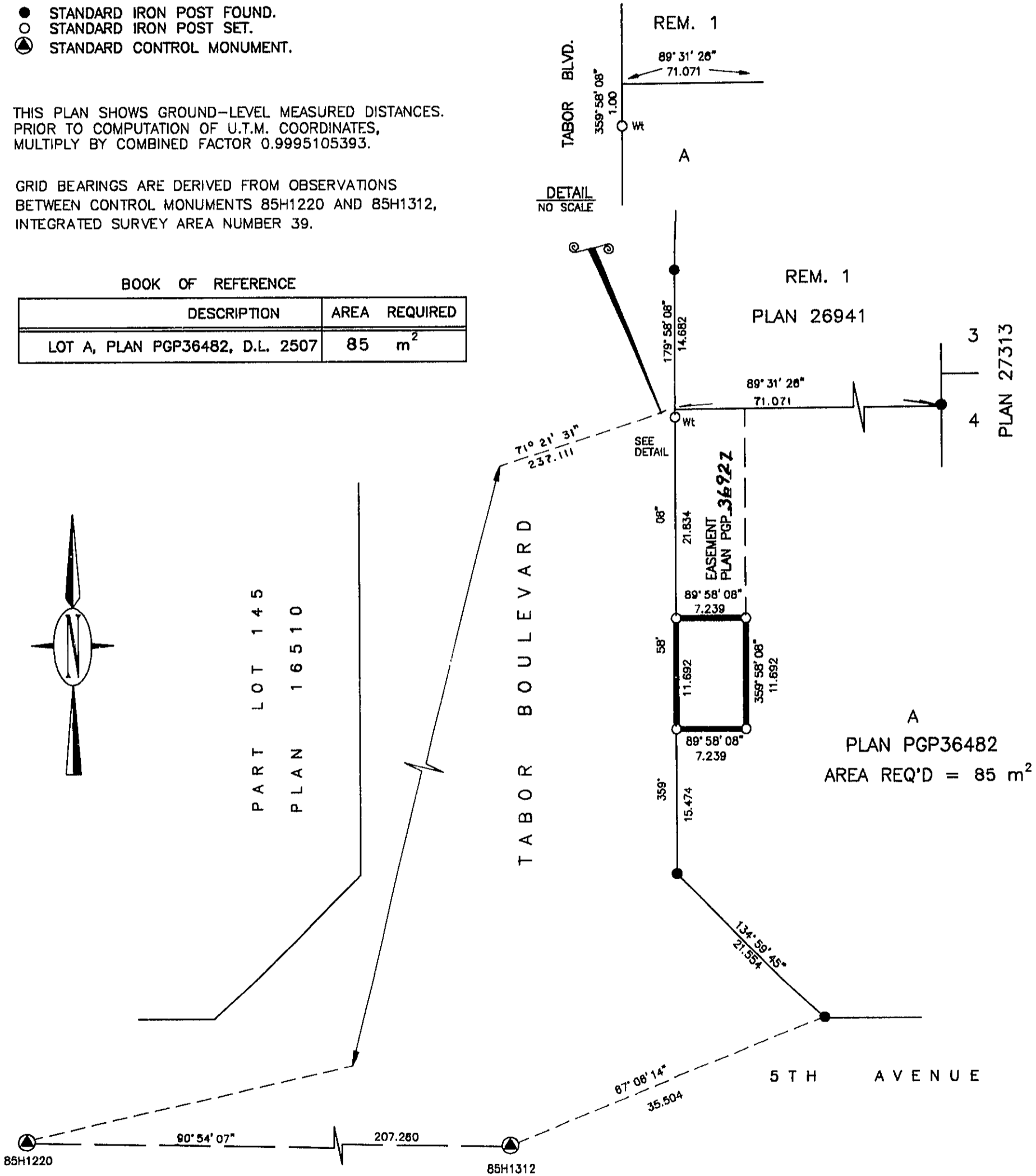
BOOK OF REFERENCE

DESCRIPTION	AREA REQUIRED
LOT A, PLAN PGP36482, D.L. 2507	85 m ²



PART LOT 145
 PLAN 16510

TABOR BOULEVARD



26-FF-226

A
 PLAN PGP36482
 AREA REQ'D = 85 m²

I, RONALD L. JOHNS, A BRITISH COLUMBIA LAND SURVEYOR, OF PRINCE GEORGE, IN BRITISH COLUMBIA, CERTIFY THAT I WAS PRESENT AT AND PERSONALLY SUPERINTENDED THE SURVEY REPRESENTED BY THIS PLAN AND THAT THE SURVEY AND PLAN ARE CORRECT. THE SURVEY WAS COMPLETED ON THE 10TH DAY OF DECEMBER, 1992.

R.L. Johns

R.L. JOHNS, B.C.L.S.

THIS PLAN LIES WITHIN THE FRASER-FORT GEORGE REGIONAL DISTRICT.

R.L. JOHNS & ASSOCIATES
 LEGAL AND ENGINEERING SURVEYS
 240 VICTORIA STREET
 PRINCE GEORGE, B.C. V2L 2J4
 PHONE: (604) 562-5759
 FAX: (604) 562-5703