

EXPLANATORY PLAN OF
ACCESS EASEMENT OVER
PART OF LOT 1,
PLAN 31198, D.L. 2607,
CARIBOO DISTRICT.

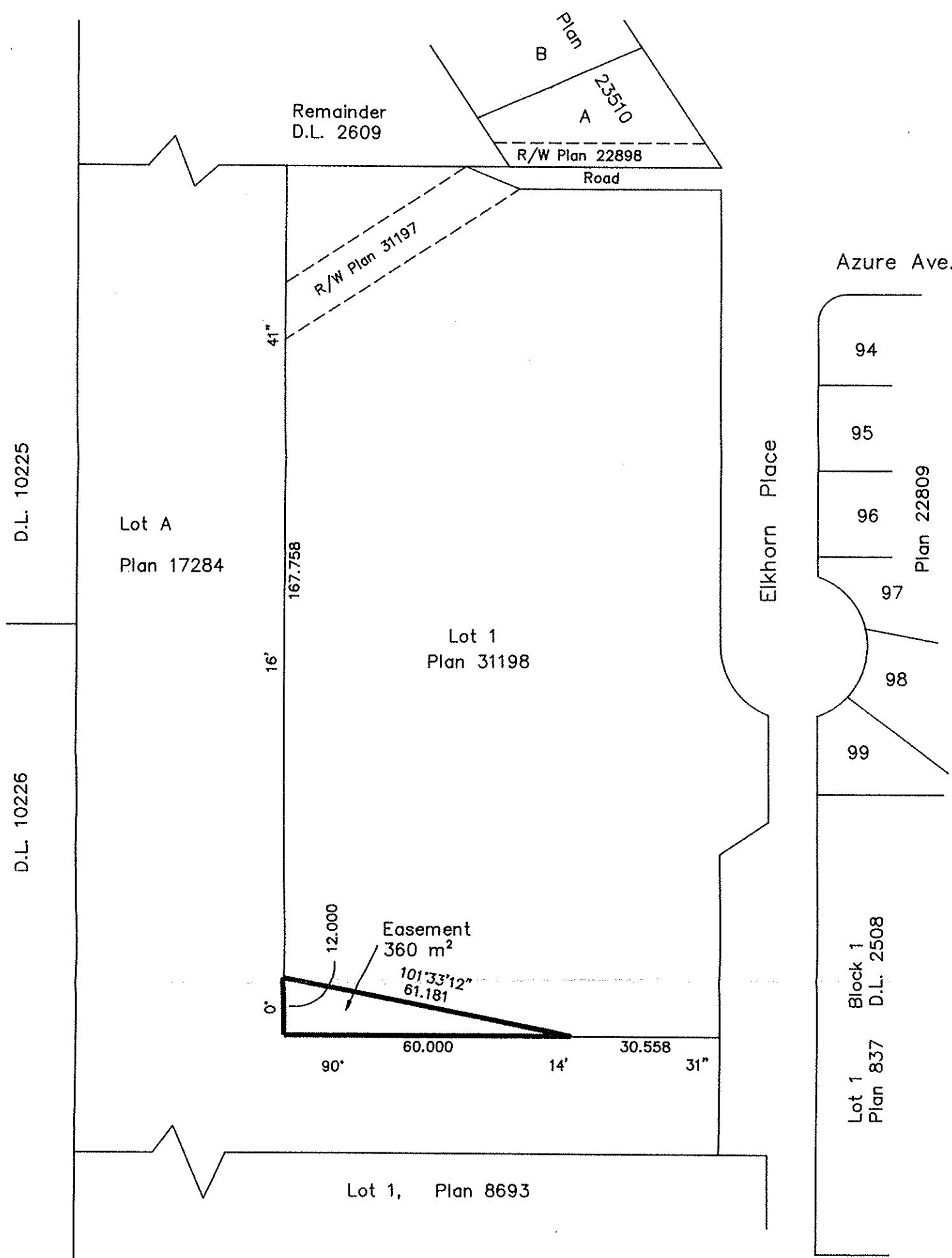
PLAN NO. PGP 37019

Deposited in the Land Title Office at Prince
George this 31 day of Mar 1993.

W B Sandy
REGISTRAR *per RH*

B.C.G.S. 93G.096

Scale: 1 : 1000 (Distances are in metres)



Certified Correct
according to Land Title Office Records
this 23rd day of March, 1993.

Gordon Kilbride
Gordon Kilbride, B.C.L.S.

This plan lies within the Fraser Fort
George Regional District.

KILBRIDE SURVEYS <i>British Columbia Land Surveyors</i> Prince George, B.C. Ph: (604) 562-1196 Fax: 562-3656		
F.B.- TV 35	D.L.- 2607	REF. NO.- 930165