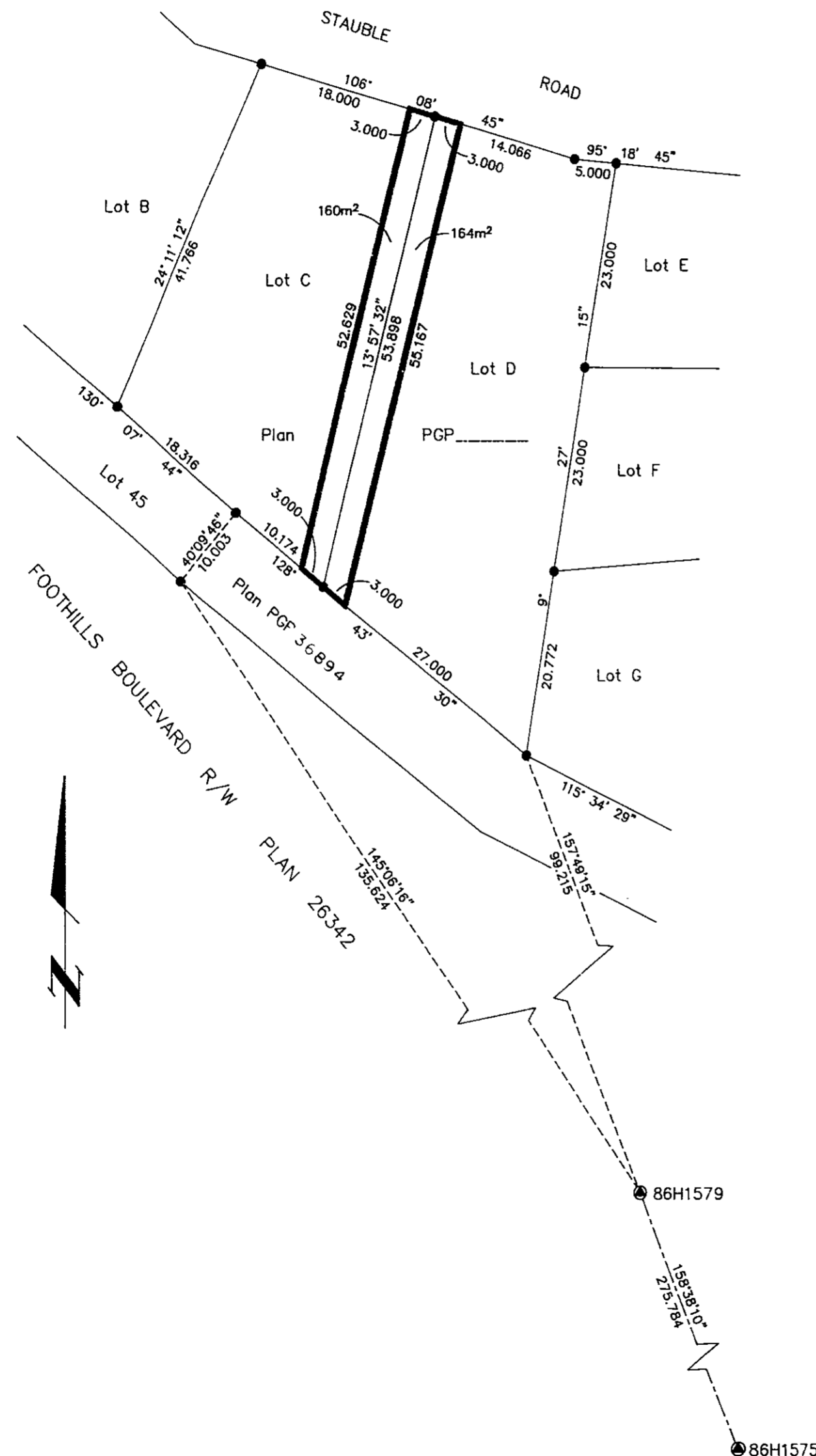


26-FF-226

PLAN NO. PGP36953

Deposited in the Land Title Office at Prince George this 12 day of March 1993.

W. G. Gandy
REGISTRAR *per R.H.*



REFERENCE PLAN OF STATUTORY RIGHT OF WAY WITHIN LOT C & LOT D, PLAN PGP 36951, DISTRICT LOT 4049, CARIBOO DISTRICT.

B.C.G.S. 93G.096

Scale: 1 : 500 (Distances are in metres)



Grid bearings are derived from observations between control monuments 86H1579 and 86H1575, integrated survey area number 39, City of Prince George, B.C.

Note: This plan shows ground level measured distances. Prior to computation of U.T.M. co-ordinates multiply by the combined factor 0.9995105393

LEGEND

- Standard Iron Post Found
- ⊙ Control Monument

I, Dale L. Keown, a British Columbia Land Surveyor of Prince George in British Columbia, certify that I was present at and personally superintended the survey represented by this plan and that the survey and plan are correct. The survey was completed on the 10th day of *November*, 1992.

Dale Keown
Dale L. Keown, B.C.L.S.

BOOK OF REFERENCE	
DESCRIPTION	AREA
Lot C	160m ²
Lot D	164m ²

This plan lies within the Fraser-Fort George Regional District.

KILBRIDE SURVEYS <i>British Columbia Land Surveyors</i> Prince George, B.C. Ph: (604) 562-1196 Fax: 562-3656		
F.B.-	D.L.- 4049	REF. NO.- 92801BRW