

REFERENCE PLAN OF EASEMENT THROUGH
LOT A, PLAN PGP36482
DISTRICT LOT 2507
CARIBOO DISTRICT

PLAN No. PGP 36927

DEPOSITED IN THE LAND TITLE OFFICE
AT PRINCE GEORGE, B.C., THIS 20th
DAY OF March, 1993.

SCALE = 1 : 500 B.C.G.S. 93G.096



W. H. Gandy
REGISTRAR
ru RH

DISTANCES ARE SHOWN IN METRES.

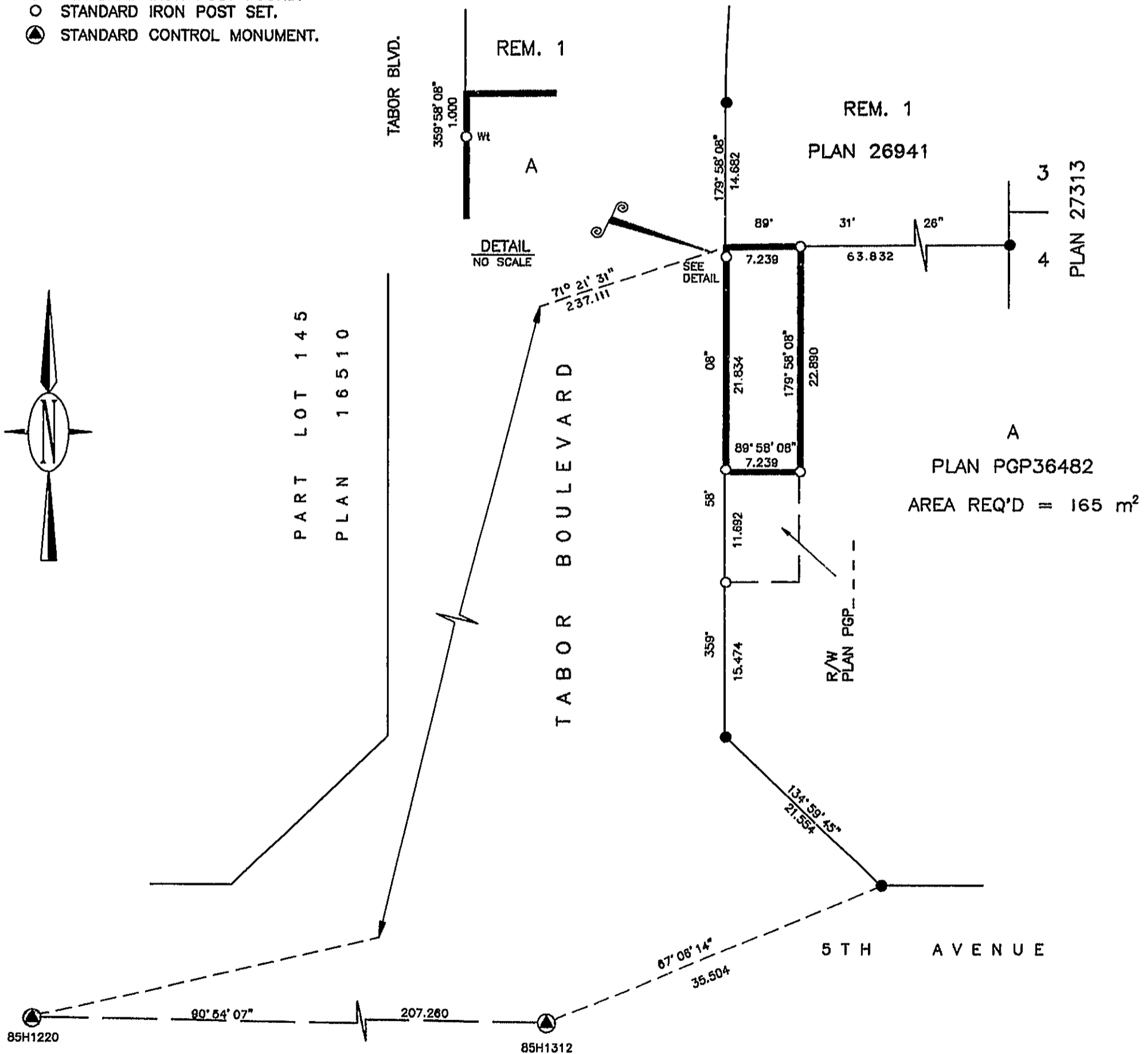
THIS PLAN SHOWS GROUND-LEVEL MEASURED DISTANCES.
PRIOR TO COMPUTATION OF U.T.M. COORDINATES,
MULTIPLY BY COMBINED FACTOR 0.9995105393.

GRID BEARINGS ARE DERIVED FROM OBSERVATIONS
BETWEEN CONTROL MONUMENTS 85H1220 AND 85H1312,
INTEGRATED SURVEY AREA NUMBER 39.

LEGEND

- STANDARD IRON POST FOUND.
- STANDARD IRON POST SET.
- ⊙ STANDARD CONTROL MONUMENT.

26-FF-2016



I, RONALD L. JOHNS, A BRITISH COLUMBIA LAND SURVEYOR, OF PRINCE GEORGE, IN BRITISH COLUMBIA, CERTIFY THAT I WAS PRESENT AT AND PERSONALLY SUPERINTENDED THE SURVEY REPRESENTED BY THIS PLAN AND THAT THE SURVEY AND PLAN ARE CORRECT. THE SURVEY WAS COMPLETED ON THE 10TH DAY OF DECEMBER, 1992.

R.L. Johns
R.L. JOHNS, B.C.L.S.

THIS PLAN LIES WITHIN THE FRASER-FORT GEORGE REGIONAL DISTRICT.

R.L. JOHNS & ASSOCIATES
LEGAL AND ENGINEERING SURVEYS
240 VICTORIA STREET
PRINCE GEORGE, B.C. V2L 2J4
PHONE: (604) 562-5759
FAX: (604) 562-5703