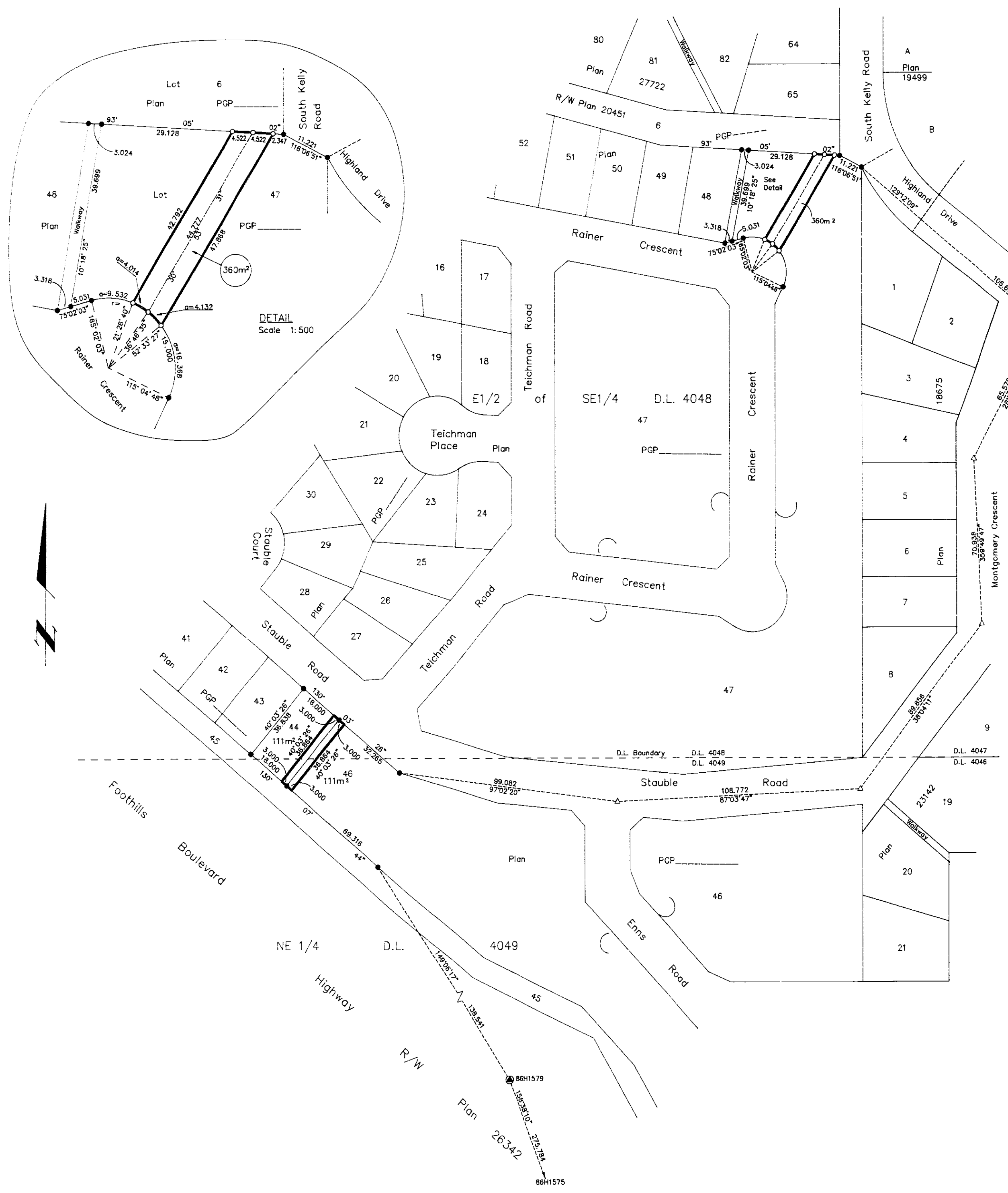
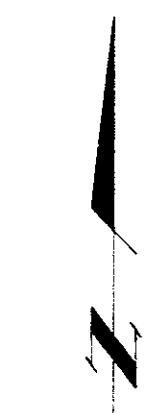
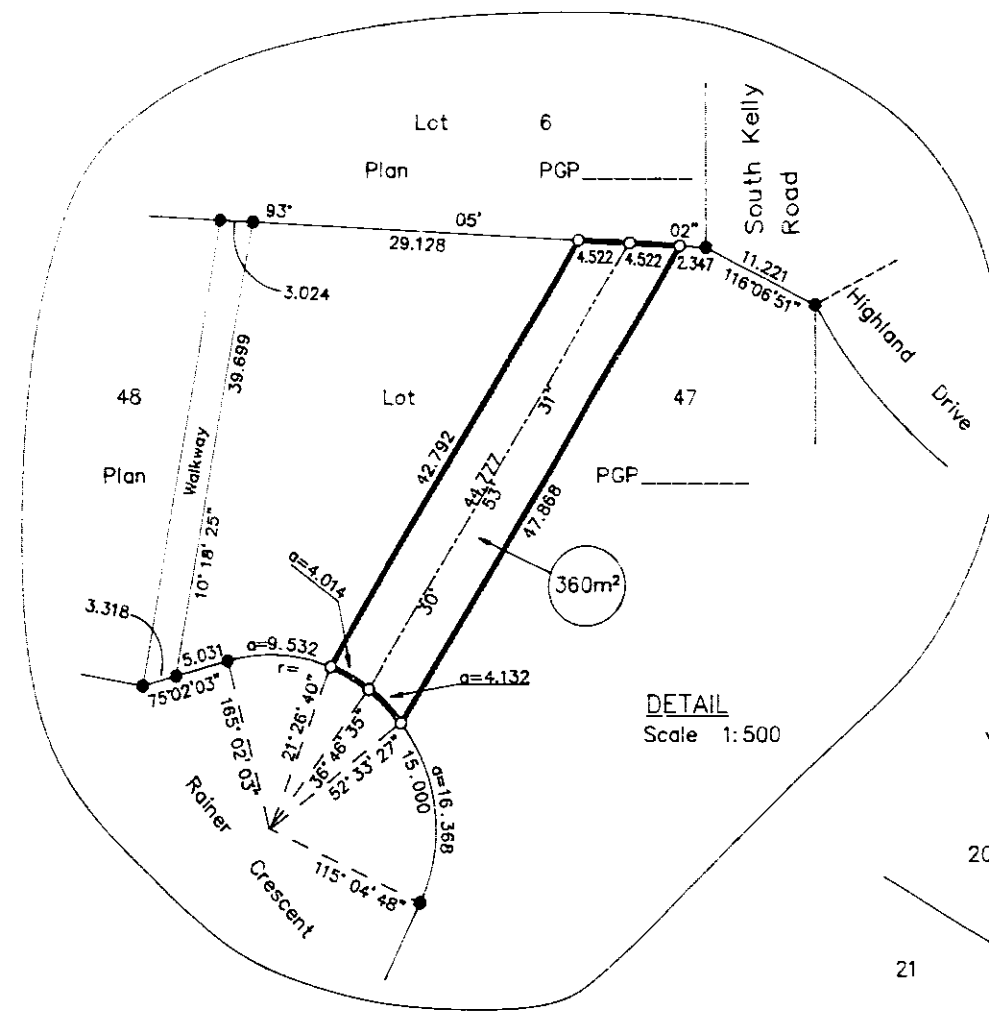


26-FF-226

PLAN NO. PGP36895

Deposited in the Land Title Office at Prince George this 5 day of February 1993

W. G. Sandy  
REGISTRAR



REFERENCE PLAN OF STATUTORY-RIGHT-OF-WAY  
WITHIN LOTS 44, 46 AND 47, PLAN PGP36894  
DISTRICT LOTS 4048 AND 4049,  
CARIBOO DISTRICT.  
B.C.G.S. 93G.096

Scale: 1 : 1000 (Distances are in metres)

Note: This plan shows ground level measured distances. Prior to computation of U.T.M. co-ordinates multiply by the combined factor 0.9995105393

Grid bearings are derived from observations between control monuments 86H1579 and 86H1575, integrated survey area number 39, City of Prince George, B.C.

LEGEND

- Standard Iron Post Found
- Standard Iron Post Placed
- ⊙ Control Monument
- △ Traverse Hub

BOOK OF REFERENCE	
DESCRIPTION	AREA
Lot 44, Plan -----	111m <sup>2</sup>
Lot 46, Plan -----	111m <sup>2</sup>
Lot 47, Plan -----	360m <sup>2</sup>

I, Dale L. Keown, a British Columbia Land Surveyor of Prince George in British Columbia, certify that I was present at and personally supervised the survey represented by this plan and that the survey and plan are correct. The survey was completed on the 25th day of September, 1992.

*Dale Keown*  
Dale L. Keown, B.C.L.S.

This plan lies within the Fraser-Fort George Regional District.

KILBRIDE SURVEYS  
British Columbia Land Surveyors  
Prince George, B.C.  
Ph: (604) 562-1196 Fax: 562-3656  
F.B.- ra D.L.- 4048 REF. NO.- 92801RW