

26-FF-226

PLAN NO. PGP36873

Deposited in the Land Title Office at Prince George this 25 day of January 1993.

W.G. Gandy
REGISTRAR

EXPLANATORY PLAN OF EASEMENT OVER PART OF LOTS 17 AND 18, PLAN PGP36139, DISTRICT LOTS 1605 AND 2003, CARIBOO DISTRICT.

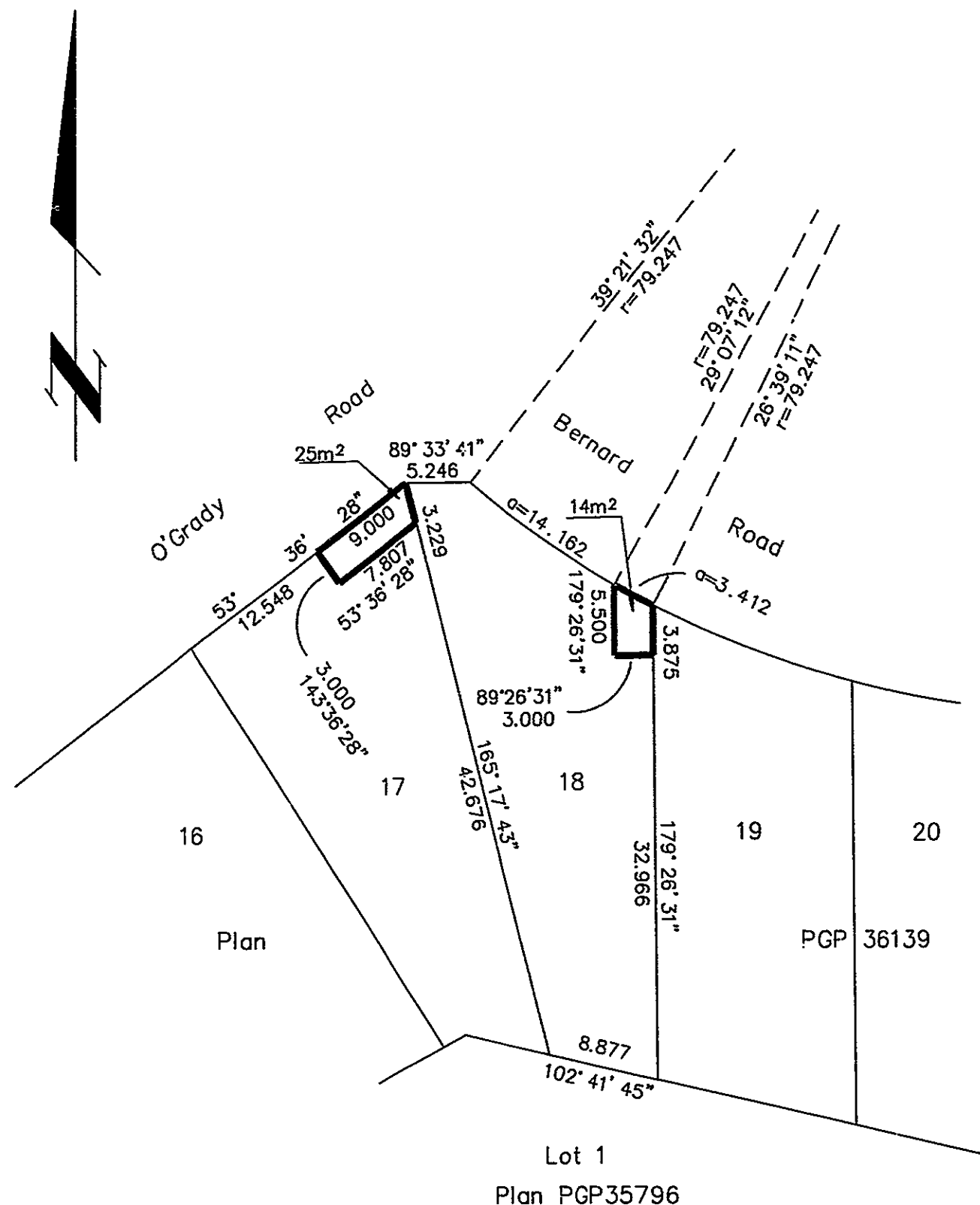
B.C.G.S. 93G.087

Scale: 1 : 500 (Distances are in metres)



Certified Correct
according to Land Title Office Records and
field measurements this 11th day of January, 1993.

Gordon Kilbride
Gordon Kilbride, B.C.L.S.



BOOK OF REFERENCE	
DESCRIPTION	AREA
Lot 17, Plan PGP36139	25m ²
Lot 18, Plan PGP36139	14m ²

This plan lies within the Fraser-Fort George Regional District.

KILBRIDE SURVEYS
 British Columbia Land Surveyors
 Prince George, B.C.
 Ph: (604) 562-1196 Fax: 562-3656

F.B.-	D.L.- 1605	REF. NO.- 930011
-------	------------	------------------