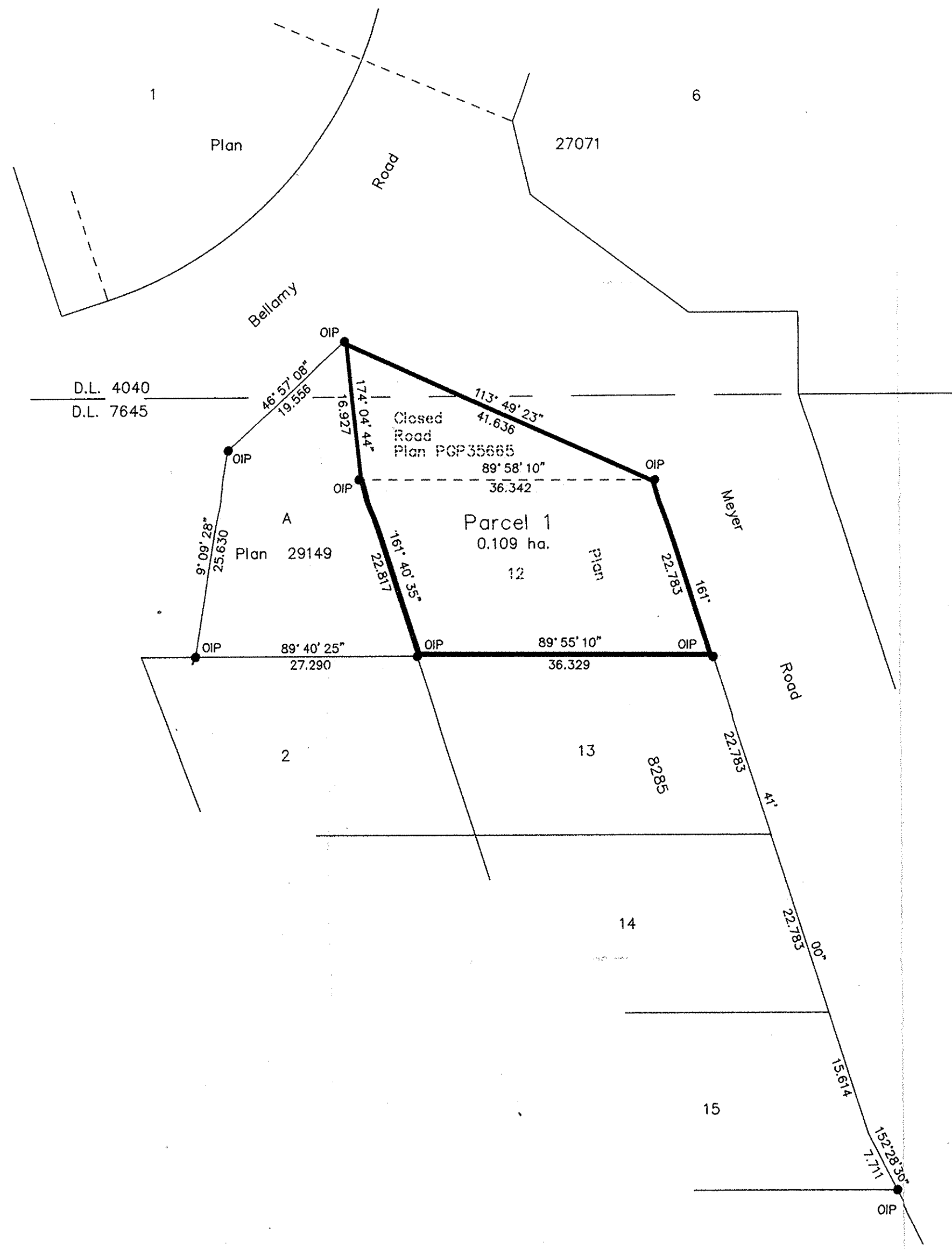


HQ

PLAN NO. PGP 36870

Deposited in the Land Title Office at Prince George this 20 day of January 1993.

W.G.G.  
REGISTRAR



REFERENCE PLAN OF CONSOLIDATION OF  
 CLOSED ROAD, PLAN PGP35665  
 AND LOT 12, PLAN 8285,  
 DISTRICT LOTS 4040 & 7645,  
 CARIBOO DISTRICT.

B.C.G.S. 93G.097

Scale: 1 : 500 (Distances are in metres)



Bearings are astronomic derived from Plan PGP 35665.

LEGEND

- IP Denotes Standard Iron Post
- Wt Denotes Witness
- Denotes Old

I, Dale L. Keown, a British Columbia Land Surveyor of Prince George in British Columbia, certify that I was present at and personally superintended the survey represented by this plan and that the survey and plan are correct. The survey was completed on the 21 day of June, 1990.

Dale L. Keown, B.C.L.S.

This plan lies within the Fraser-Fort George Regional District.

<b>KILBRIDE SURVEYS</b> British Columbia Land Surveyors Prince George, B.C. Ph: (604) 562-1196 Fax: 562-3656		
F.B.- SJ 6	D.L.- 4040	REF. NO.- 90526-1

NCR 14/01/93