

SURVEY PLAN OF  
BLOCK A OF LOT 774 and  
BLOCK A OF LOT 848,  
CARIBOO DISTRICT.

B.C.G.S. 93 J. 028

SCALE: 1:10,000



Bearings are astronomic derived from a Solar observation  
and are referred to the meridian through the west bay of Lot 762.  
ST Bearings are magnetic.  
Distances are in metres unless otherwise indicated.  
This plan lies within the Fraser Fort George Regional District.

PLAN PGP36844

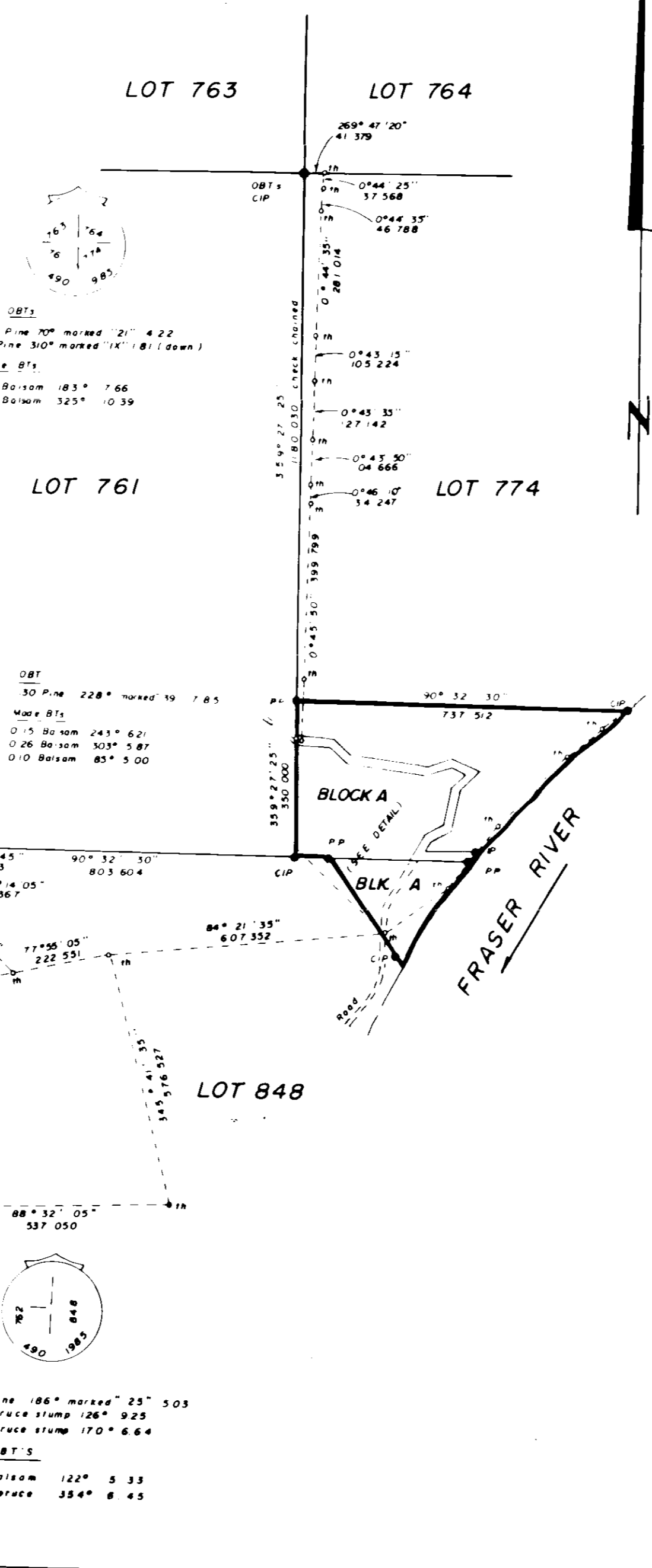
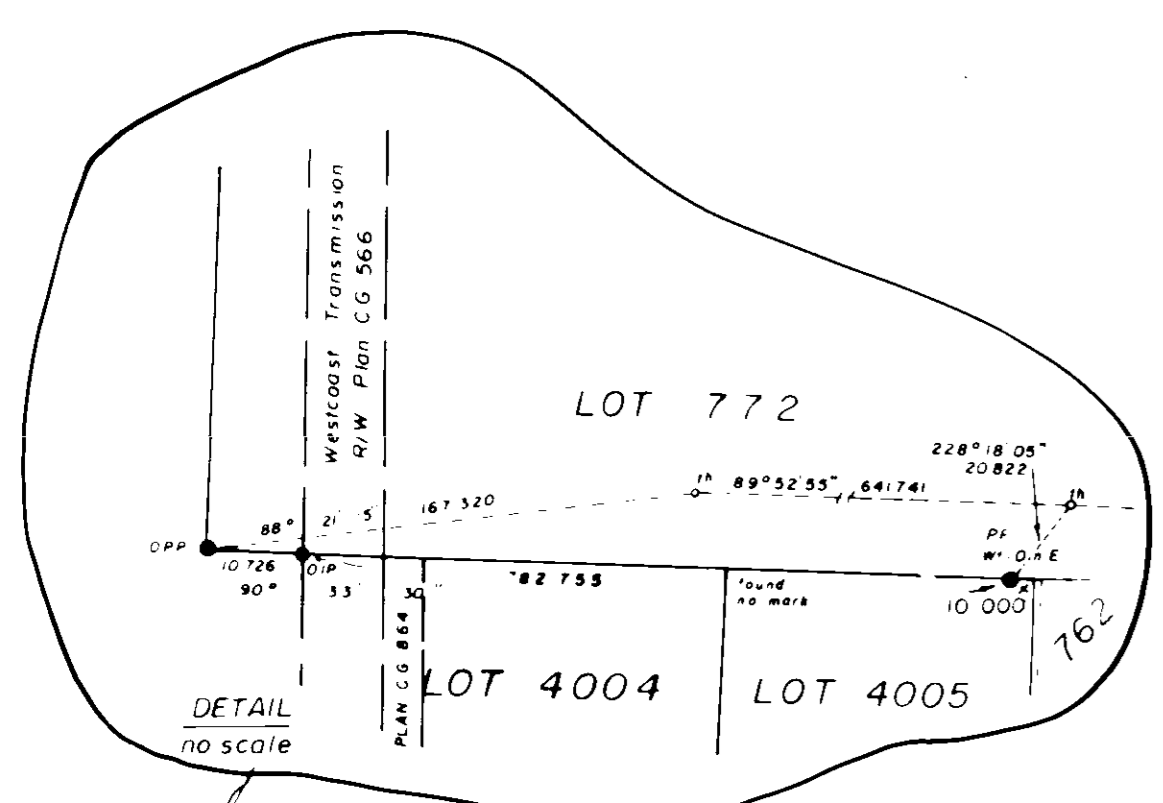
Deposited in the Land Title Office at Prince George, B.C.

this 11 day of January 1993

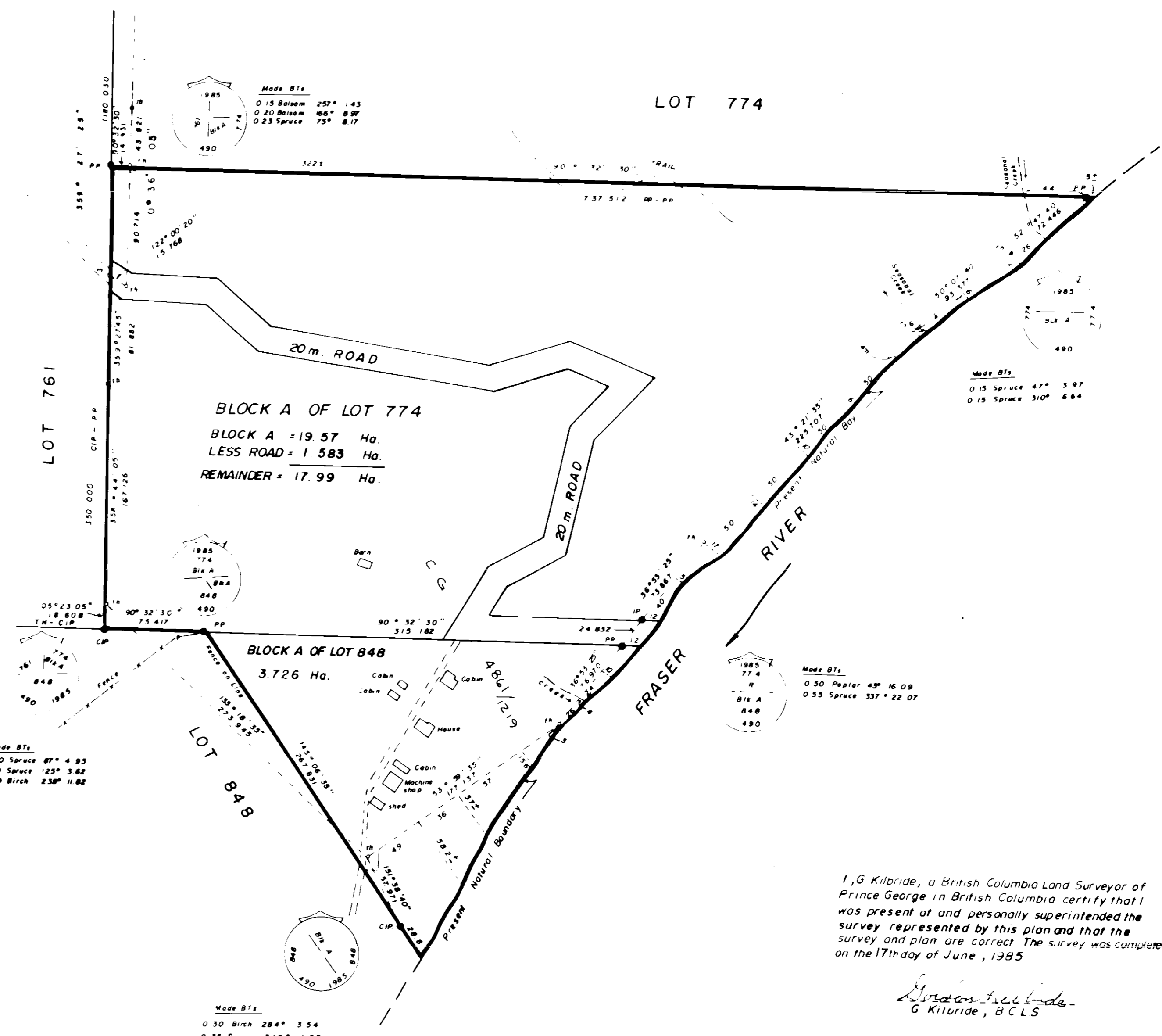
*W. S. Sandy*  
Registrar  
Pursuant to Sec. 59, Land Title Act

OFFICIAL PLAN

CONFIRMED  
UNDER SECTION 67-LAND ACT  
*W. S. Sandy*  
SURVEYOR GENERAL  
VICTORIA B.C. OCT. 4, 1985



DETAIL  
Scale: 1:2500



I, G. Kilbride, a British Columbia Land Surveyor of  
Prince George in British Columbia certify that I  
was present at and personally superintended the  
survey represented by this plan and that the  
survey and plan are correct. The survey was completed  
on the 17th day of June, 1985.

*G. Kilbride*  
G. Kilbride, B.C.L.S.

I hereby certify that this is a true copy  
of the Official Plan of Block A of District  
Lot 774 and Block A of District Lot 848,  
Cariboo District outlined hereon and on  
deposit with the Surveyor General, Ministry  
of Environment, Lands and Parks  
and numbered 15 T 1290

*W. S. Sandy*  
Deputy Surveyor General, Victoria B.C.

W. D. USHER & ASSOCIATES,  
LAND SURVEYORS,  
PRINCE GEORGE - BRITISH COLUMBIA.