

HMI 116440

POSTING PLAN OF SOUTH BOUNDARY OF
LOT 11, BLOCK 63, PLAN 752
DISTRICT LOT 936
CARIBOO DISTRICT.

SCALE 1 : 1000 B.C.G.S. 93G.097



DISTANCES ARE SHOWN IN METERS.

THIS PLAN SHOWS GROUND-LEVEL MEASURED DISTANCES.
PRIOR TO COMPUTATION OF U.T.M. COORDINATES,
MULTIPLY BY COMBINED FACTOR 0.9995105393.

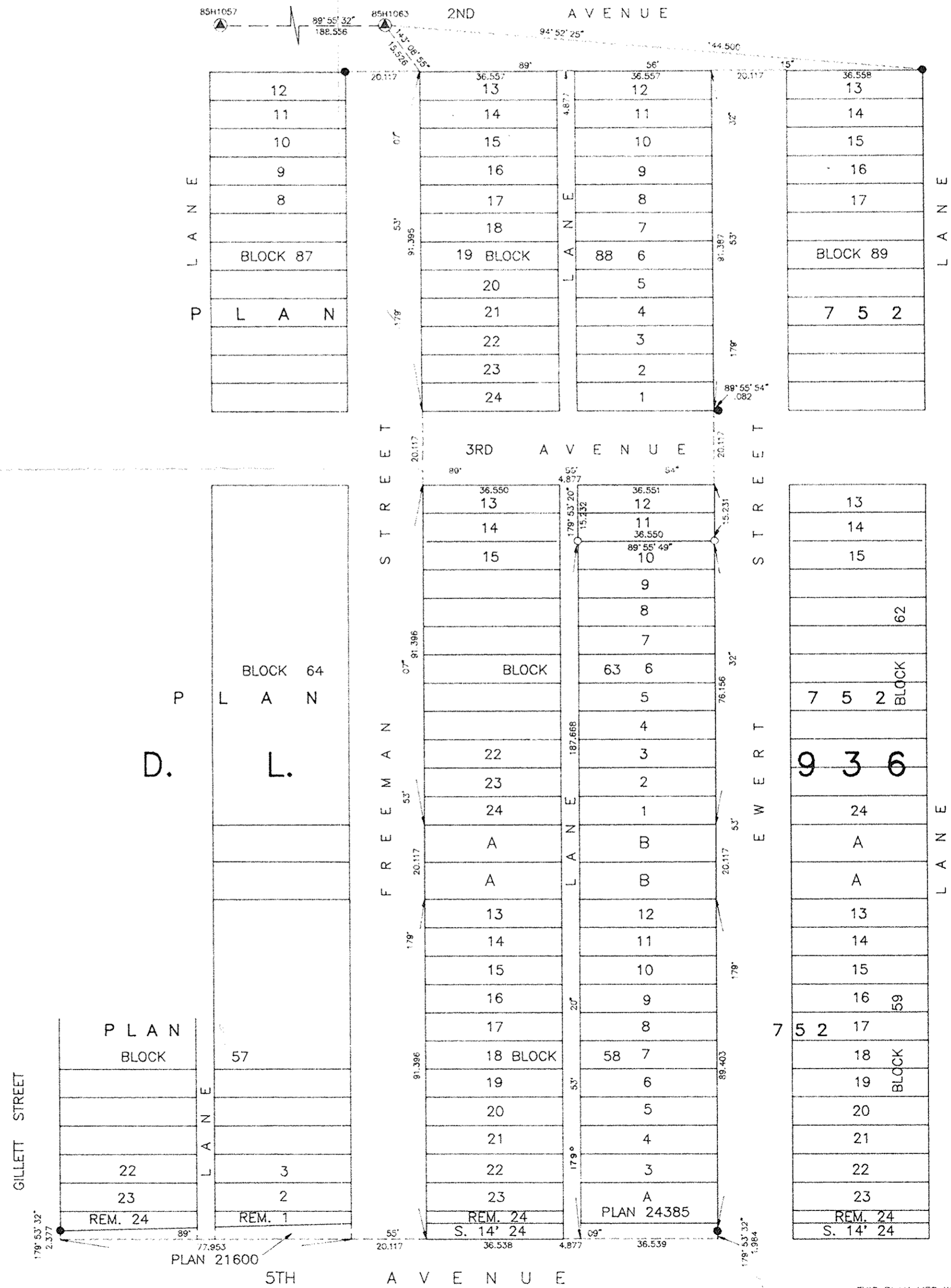
GRID BEARINGS ARE DERIVED FROM OBSERVATIONS
BETWEEN CONTROL MONUMENTS 85H1057 AND 85H1063,
INTEGRATED SURVEY AREA NUMBER 39.

LEGEND

- STANDARD IRON POST FOUND.
- ▲ CONTROL MONUMENT.
- STANDARD IRON POST PLACED.
- STANDARD ALUMINUM BOLT FOUND.



PLAN No. PGP 36700
DEPOSITED IN THE LAND TITLE OFFICE
AT PRINCE GEORGE, B.C., THIS 19
DAY OF Nov 19 92



I, RONALD L. JOHNS, A BRITISH COLUMBIA LAND SURVEYOR, OF PRINCE GEORGE, IN BRITISH COLUMBIA, CERTIFY THAT I WAS PRESENT AT AND PERSONALLY SUPERINTENDED THE SURVEY REPRESENTED BY THIS PLAN AND THAT THE SURVEY AND PLAN ARE CORRECT. THE SURVEY WAS COMPLETED ON THE 15TH DAY OF OCTOBER, 1992.

R.L. Johns

R.L. JOHNS, B.C.L.S.

THIS PLAN LIES WITHIN THE FRASER-FORT GEORGE REGIONAL DISTRICT.

R.L. JOHNS & ASSOCIATES
LEGAL AND ENGINEERING SURVEYS
240 VICTORIA STREET
PRINCE GEORGE, B.C. V2L 2J4
PHONE: (604) 562-5759
FAX: (604) 562-5703