

HM

REFERENCE PLAN OF CONSOLIDATION OF  
LOTS 1 & 2, BLOCK 51, PLAN 1268  
DISTRICT LOT 343  
CARIBOO DISTRICT

PLAN No. PGP 36670

DEPOSITED IN THE LAND TITLE OFFICE  
AT PRINCE GEORGE, B.C., THIS 4  
DAY OF NOV 19 92

SCALE = 1 : 750 B.C.G.S. 93G.097



DISTANCES ARE SHOWN IN METRES.

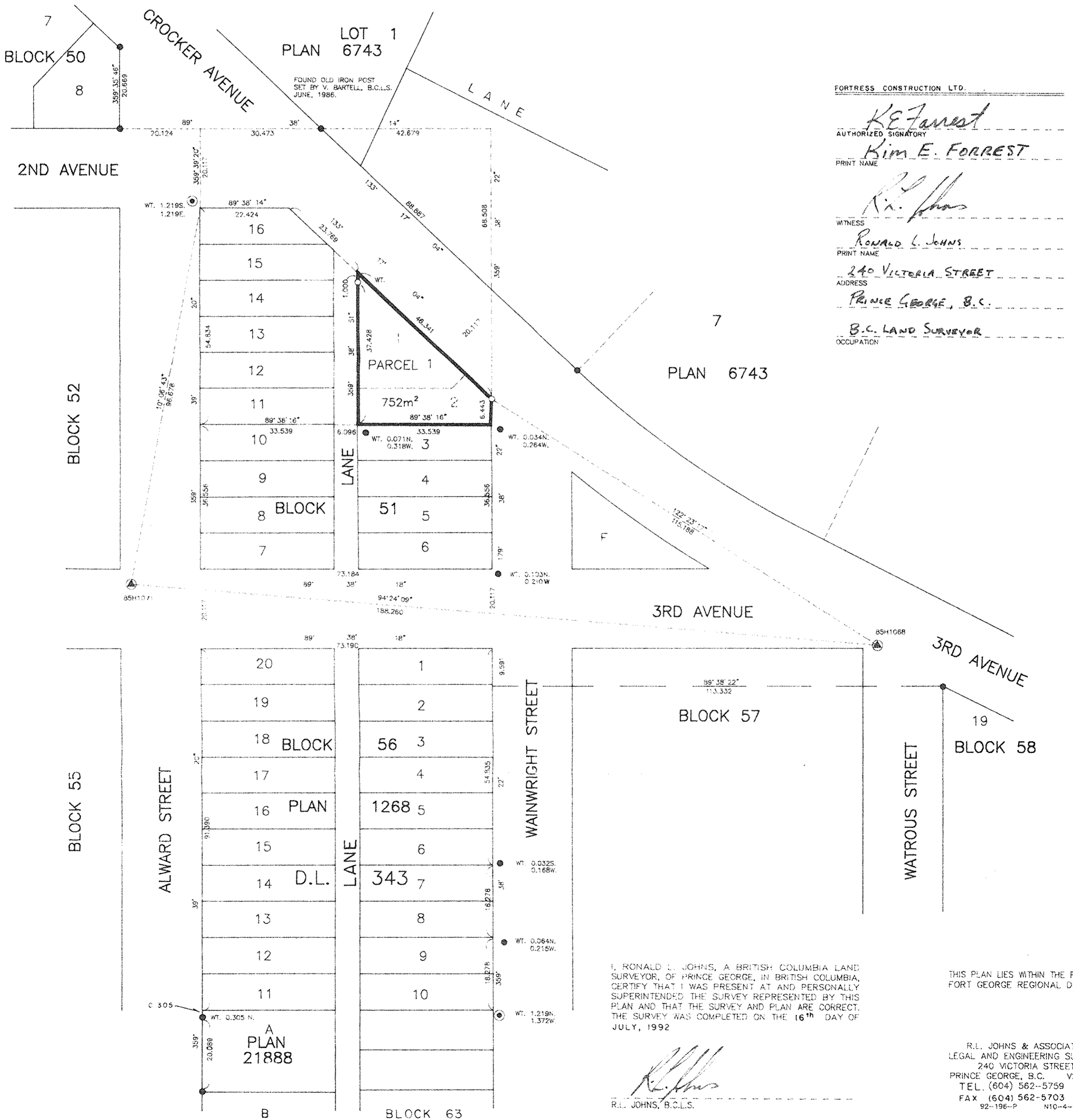
GRID BEARINGS ARE DERIVED FROM OBSERVATIONS  
BETWEEN CONTROL MONUMENTS 85H1071 AND 85H1068,  
INTEGRATED SURVEY AREA NUMBER 39.

THIS PLAN SHOWS GROUND-LEVEL MEASURED DISTANCES,  
PRIOR TO COMPUTATION OF U.T.M. COORDINATES,  
MULTIPLY BY COMBINED FACTOR 0.9995105393.

LEGEND

- STANDARD IRON POST FOUND.
- STANDARD IRON POST PLACED.
- ▲ CONTROL MONUMENT.
- ⊙ STANDARD CONCRETE POST FOUND.

*W.J. Gandy*  
REGISTRAR



FORTRESS CONSTRUCTION LTD.

*KE Forrest*  
AUTHORIZED SIGNATORY

*Kim E. Forrest*  
PRINT NAME

*R.L. Johns*  
WITNESS

*Ronald L. Johns*  
PRINT NAME

240 VICTORIA STREET  
ADDRESS

PRINCE GEORGE, B.C.

B.C. LAND SURVEYOR  
OCCUPATION

I, RONALD L. JOHNS, A BRITISH COLUMBIA LAND SURVEYOR, OF PRINCE GEORGE, IN BRITISH COLUMBIA, CERTIFY THAT I WAS PRESENT AT AND PERSONALLY SUPERINTENDED THE SURVEY REPRESENTED BY THIS PLAN AND THAT THE SURVEY AND PLAN ARE CORRECT. THE SURVEY WAS COMPLETED ON THE 16<sup>th</sup> DAY OF JULY, 1992

THIS PLAN LIES WITHIN THE FRASER-FORT GEORGE REGIONAL DISTRICT.

*R.L. Johns*  
R.L. JOHNS, B.C.L.S.

R.L. JOHNS & ASSOCIATES  
LEGAL AND ENGINEERING SURVEYS  
240 VICTORIA STREET  
PRINCE GEORGE, B.C. V2L 2J4  
TEL. (604) 562-5759  
FAX (604) 562-5703  
92-196-P N10-4-6