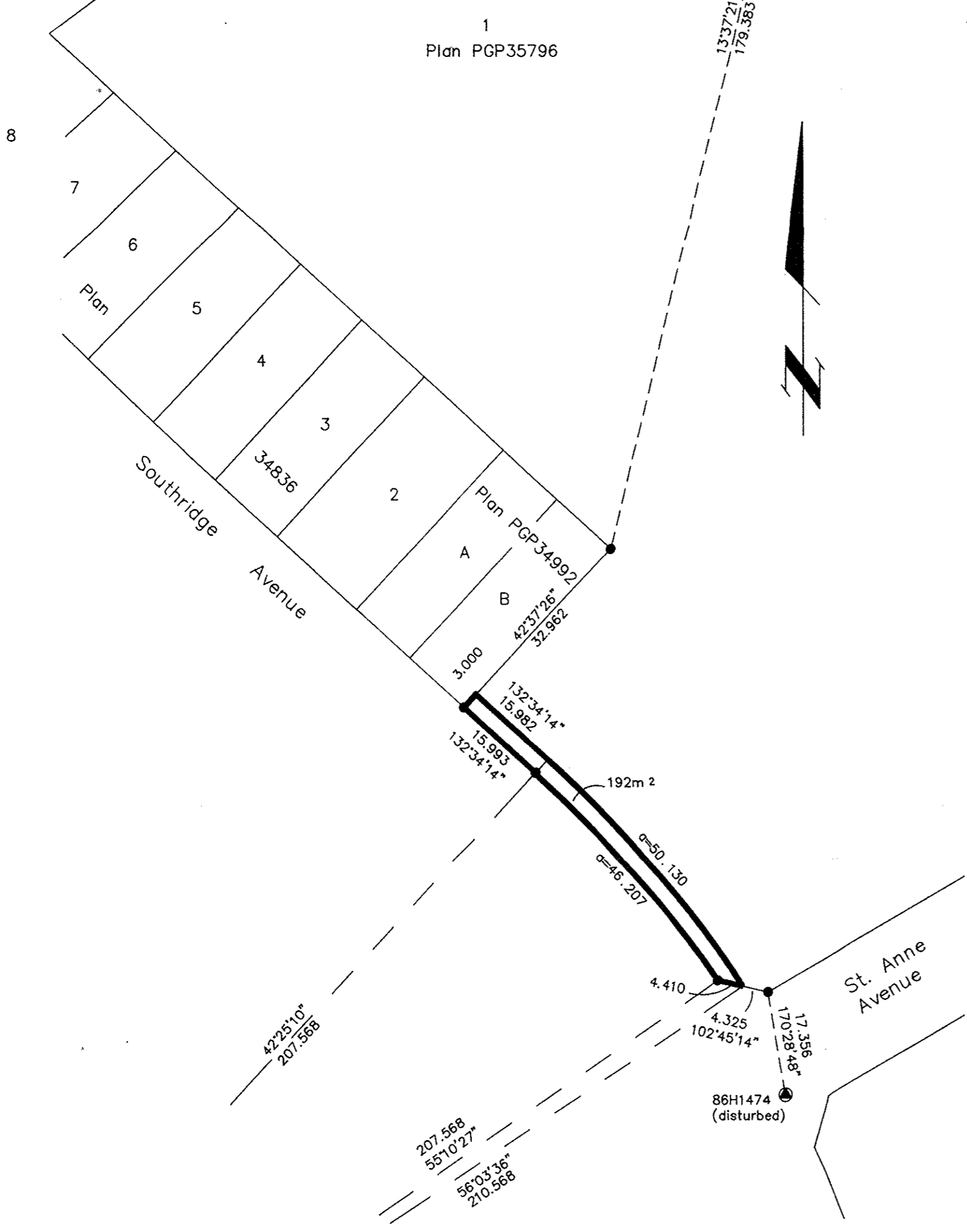
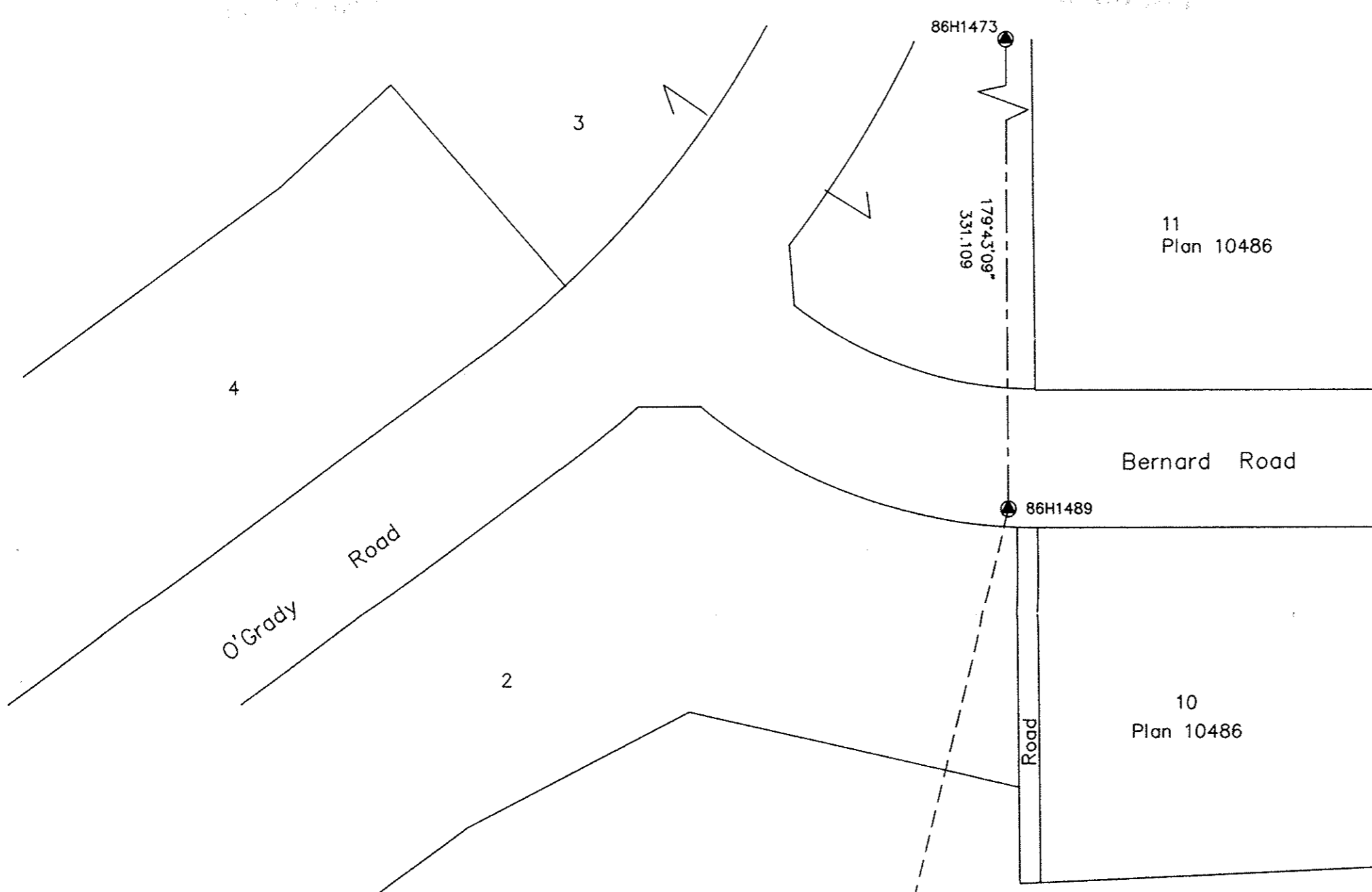


HT

PLAN NO. PGP 36624

Deposited in the Land Title Office at Prince George this 14 day of Oct 1992

REGISTRAR *W. G. L.*



BC GAS INC.

**REFERENCE PLAN OF STATUTORY
RIGHT-OF-WAY WITHIN LOT 1,
PLAN PGP35796, DISTRICT LOT 1605,
CARIBOO DISTRICT.
B.C.G.S. 93G. 087**

Scale: 1 : 750 (Distances are in metres)

Note: This plan shows ground level measured distances. Prior to computation of U.T.M. co-ordinates multiply by the combined factor 0.9995105393

Grid bearings are derived from observations between control monuments 86H1473 and 86H1489, integrated survey area number 39, City of Prince George, B.C.

LEGEND

- Standard Iron Post Found
- ⊙ Control Monument

I, Gordon Kilbride, a British Columbia Land Surveyor of Prince George in British Columbia, certify that I was present at and personally superintended the survey represented by this plan and that the survey and plan are correct. The survey was completed on the 16th day of January, 1992.

Gordon Kilbride
Gordon Kilbride, B.C.L.S.

This plan lies within the Fraser Fort George Regional District.

KILBRIDE SURVEYS		
<i>British Columbia Land Surveyors</i>		
Prince George, B.C.		
Ph: (604) 562-1196 Fax: 562-3656		
F.B.- ST 23	D.L.- 1605	REF. NO.- 92034