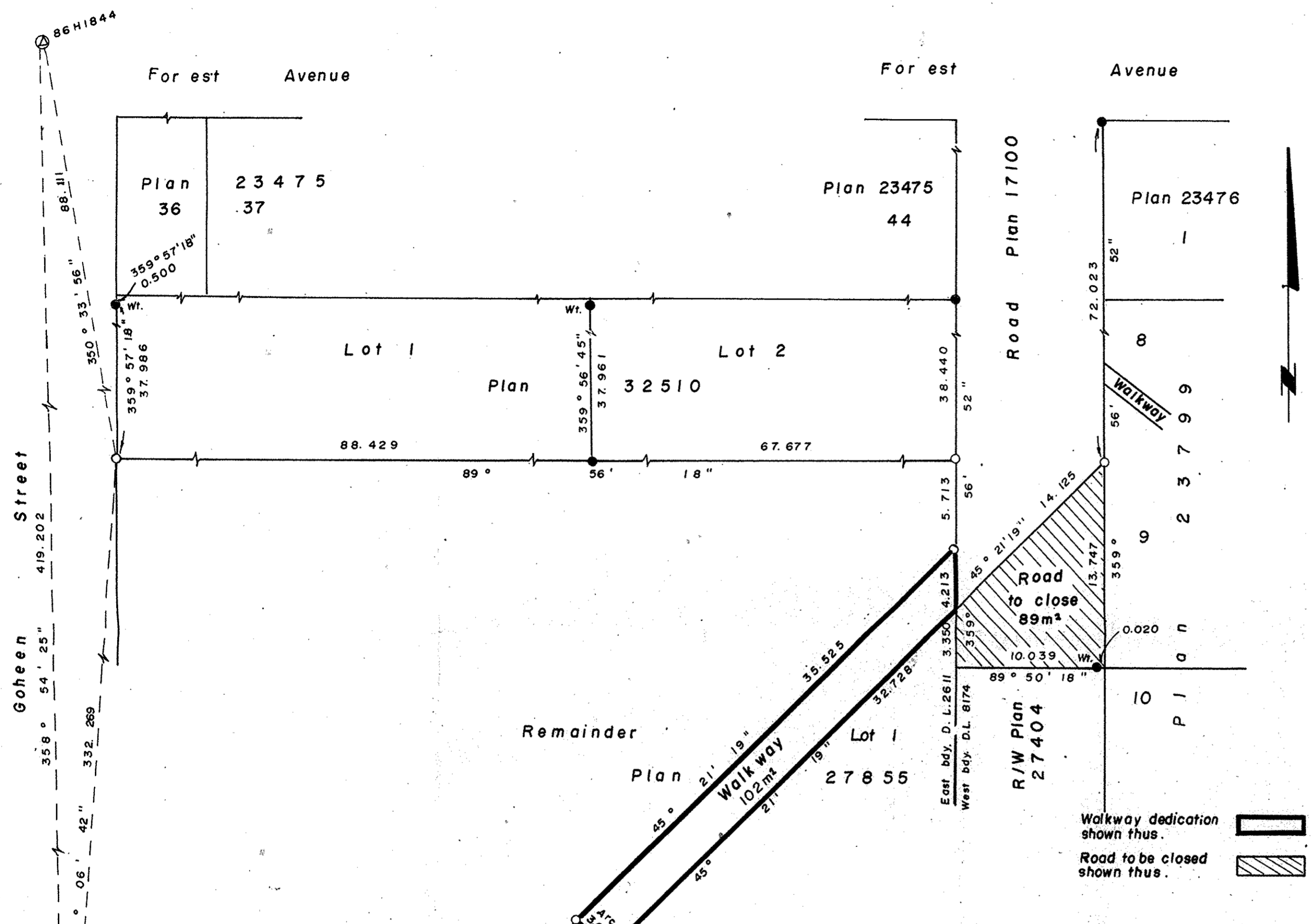


PLAN NO. PGP

Deposited in the Land Title Office at Prince George this 2nd day of October 1992.

W. J. Gandy Registrar



REFERENCE PLAN TO ACCOMPANY
 CITY OF PRINCE GEORGE BY LAW
 CLOSING PART OF ROAD, PLAN 17100,
 D.L. 8174, AND DEDICATING AS
 WALKWAY PART OF THE REMAINDER
 OF LOT 1, PLAN 27855, D.L. 2611 & 8174,
 CARIBOO DISTRICT.
 B.C.G.S. 936.087

SCALE: 1:250 (All distances are in metres.)



Grid bearings are derived from observations between
 Control Monuments 86H1844 and 86H1840, Integrated
 survey area no. 39, City of Prince George, B.C.

- Standard Iron Post found.
- Standard Iron Post placed.
- ⊙ Control Monument
- Wt. Witness

Note: This plan shows ground level measured distances.
 Prior to computation of U.T.M. co ordinates multiply
 by the combined factor 0.9995105393.

I, A. Daniluck, a British Columbia Land Surveyor, of
 Prince George in British Columbia certify that I was
 present at and personally supervised the survey
 represented by this plan and that the survey and
 plan are correct. The survey was completed on
 the 7th day of July, 1992.

A. Daniluck
 A. Daniluck, B.C.L.S.

Owner: Remainder Lot 1, Plan 27855,
 City of Prince George
[Signature] JOHN BACKHOUSE, MAYOR
 Authorized Signatory Print Name
[Signature] J.A. FORREST, CITY CLERK
 Authorized Signatory Print Name

Witness *[Signature]*
 to both signatures
 Address 132 McLean Drive
 Prince George Postal Code V2M 4R3
 Occupation Secretary

Approved under the Land Title Act
 this 2nd day of October 1992.
[Signature]
 Approving Officer
 City of Prince George.

This plan lies within the Fraser Fort
 George Regional District.

A. Daniluck,
 B.C. Land Surveyor,
 Prince George, B.C.
 REF. NO. 92-010-X