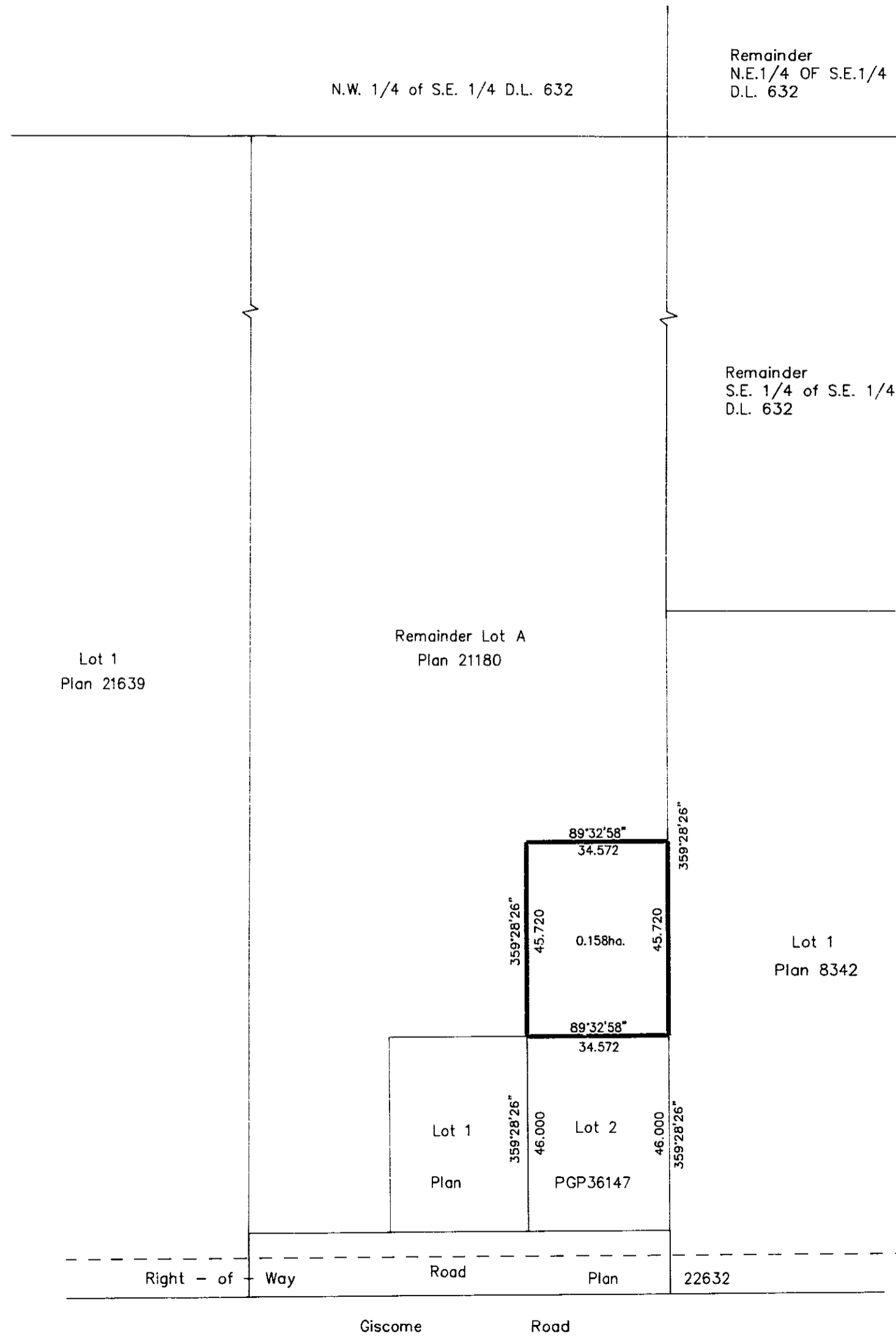


26-FF-226

PLAN NO. PGP36556

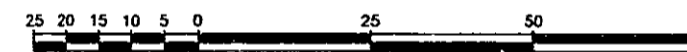
Deposited in the Land Title Office at Prince George this 21 day of SEPT 1992

W. J. Handy
REGISTRAR



EXPLANATORY PLAN OF
 EASEMENT WITHIN THE REMAINDER
 LOT A, PLAN 21180, D.L. 632,
 CARIBOO DISTRICT.
 B.C.G.S. 93G.097 & 93G.087

Scale: 1 : 1000 (Distances are in metres)



Bearings are astronomic derived from Plan PGP36147

Certified Correct
according to Land Title Office Records
this 20th day of August, 1992.

Gordon Kilbride
Gordon Kilbride, B.C.L.S.

This plan lies within the Fraser-Fort George Regional District.

KILBRIDE SURVEYS British Columbia Land Surveyors Prince George, B.C. Ph: (604) 562-1196 Fax: 562-3656		
F.B.-	D.L.- 632	REF. NO.- 92734