

Deposited in the Land Title Office at Prince George this 17 day of Sep 1992

W. Y. Lundy
REGISTRAR

REFERENCE PLAN OF EASEMENT IN PART OF REMAINDER OF PARCEL A (J7598) OF BLOCK 1, PLAN 1065, DISTRICT LOT 1605, CARIBOO DISTRICT.

B.C.G.S. 93G.087

Scale: 1 : 2000 (Distances are in metres)

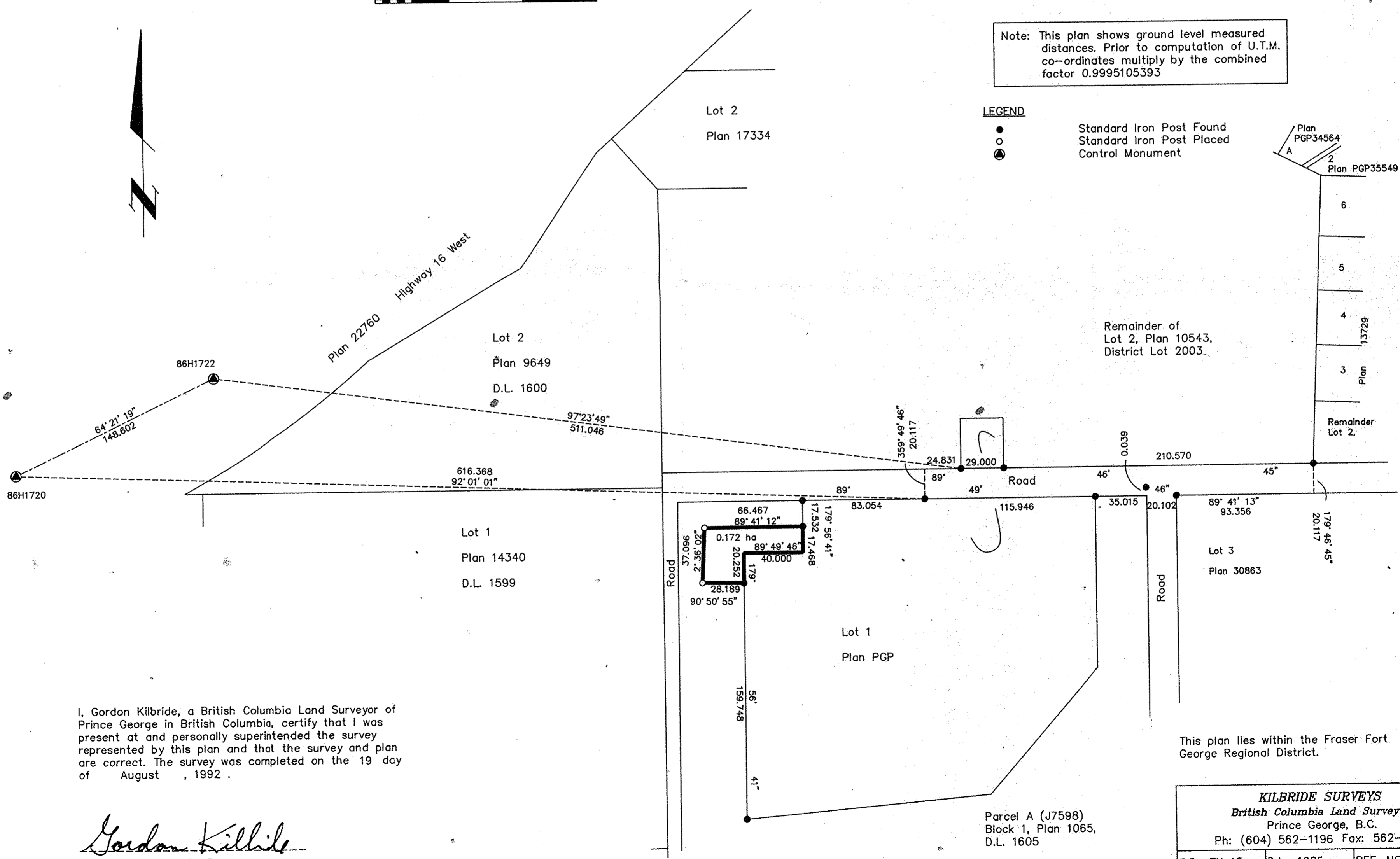


Grid bearings are derived from observations between control monuments 86H1720 and 86H1722, integrated survey area number 39, City of Prince George, B.C.

Note: This plan shows ground level measured distances. Prior to computation of U.T.M. co-ordinates multiply by the combined factor 0.9995105393

LEGEND

- Standard Iron Post Found
- Standard Iron Post Placed
- ⊙ Control Monument



I, Gordon Kilbride, a British Columbia Land Surveyor of Prince George in British Columbia, certify that I was present at and personally supervised the survey represented by this plan and that the survey and plan are correct. The survey was completed on the 19 day of August, 1992.

Gordon Kilbride
Gordon Kilbride, B.C.L.S.

This plan lies within the Fraser Fort George Regional District.

Parcel A (J7598)
Block 1, Plan 1065,
D.L. 1605

KILBRIDE SURVEYS		
British Columbia Land Surveyors		
Prince George, B.C.		
Ph: (604) 562-1196 Fax: 562-3656		
F.B.- TN 15	D.L.- 1605	REF. NO.- 92655B