

PLAN No. PGP36541
 PREPARED BY: J. L. JONES & ASSOCIATES
 1100 - 10th Street, S.E. - Suite 100
 Olympia, WA 98513
 DATE: 11/11/03
John L. Jones - owner

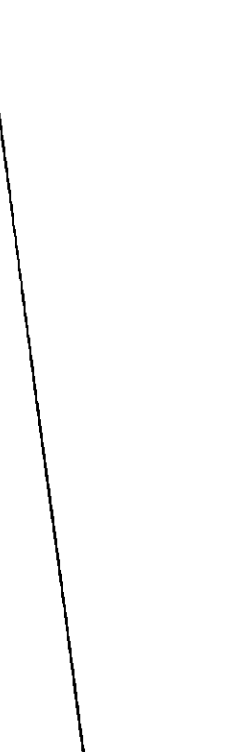
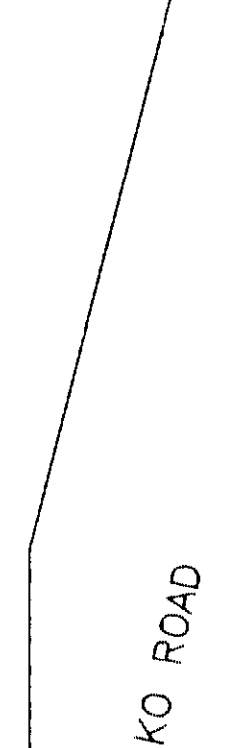
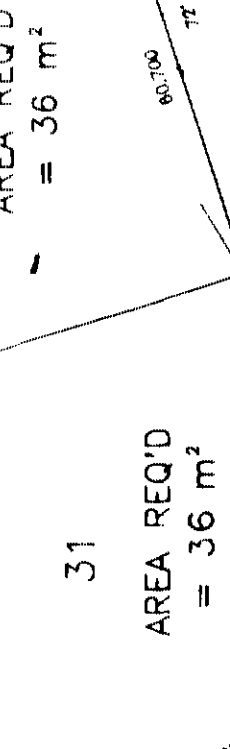
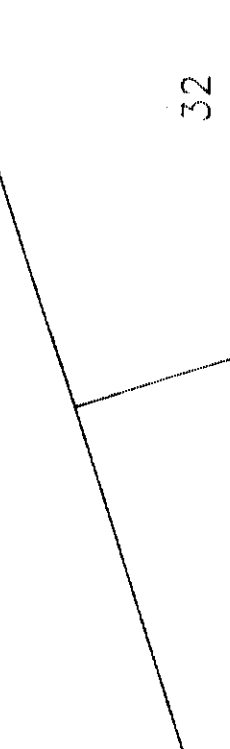
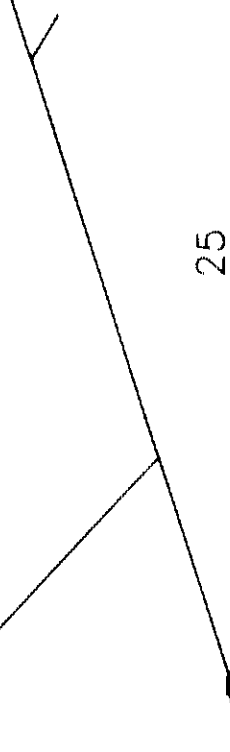
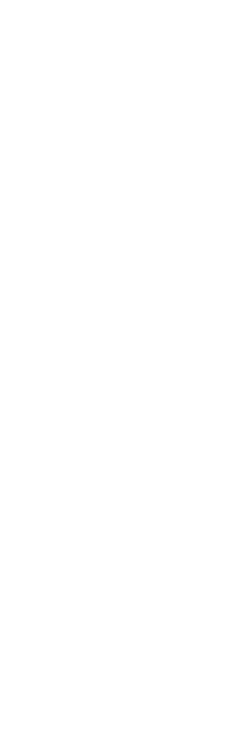
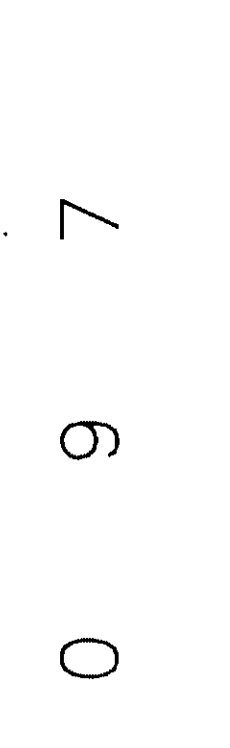
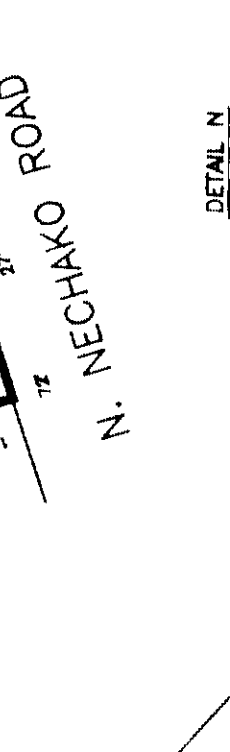
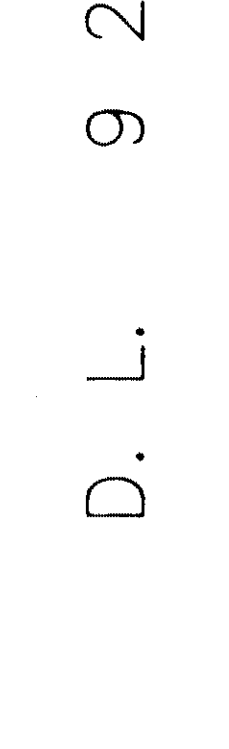
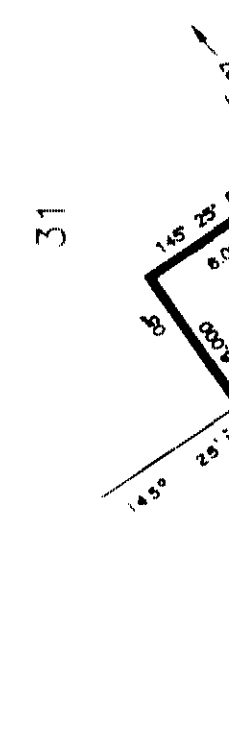
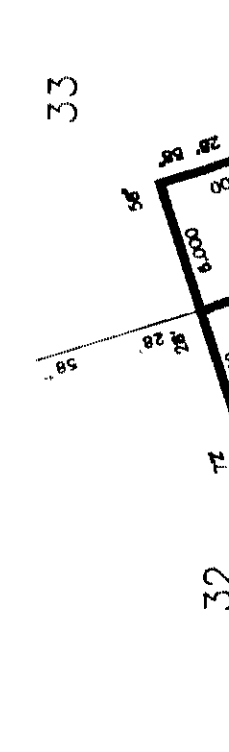
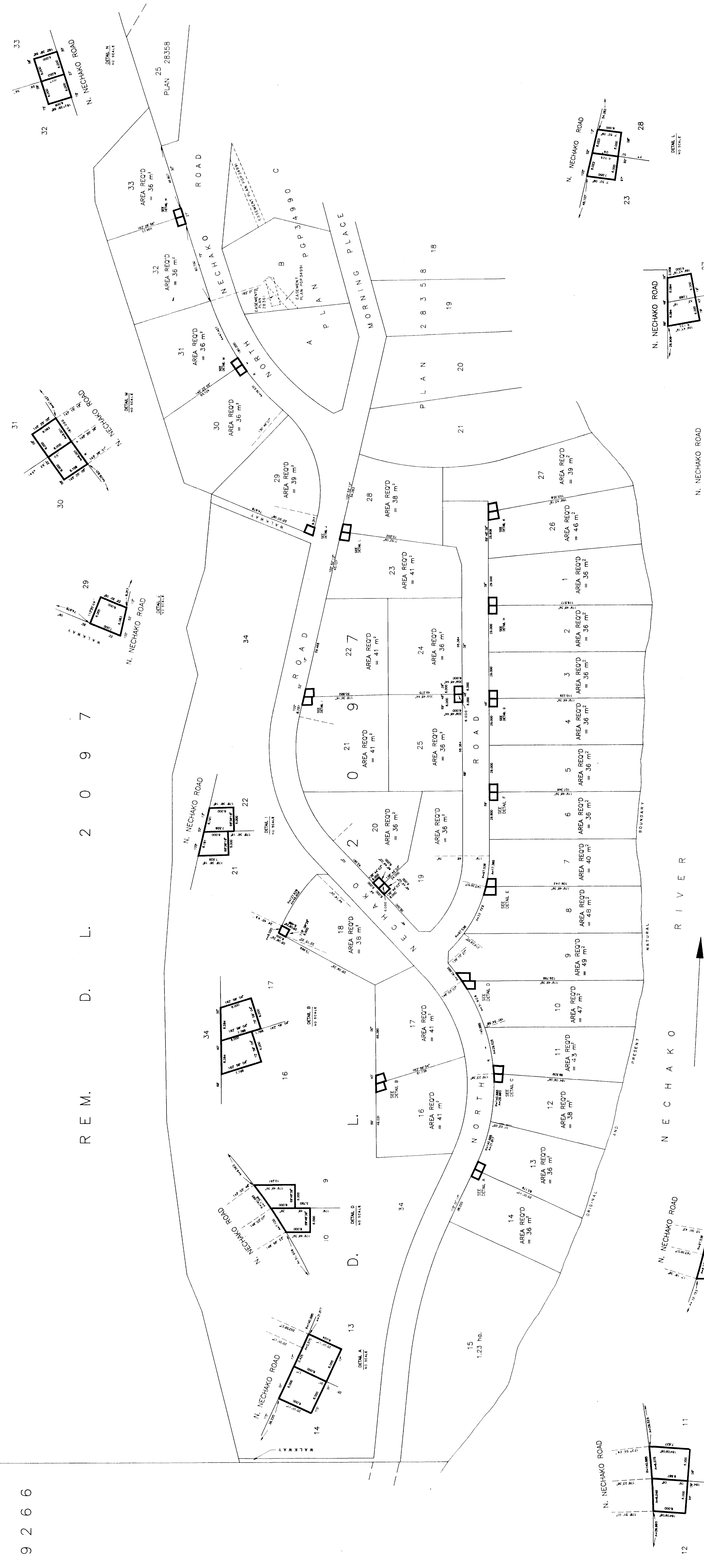
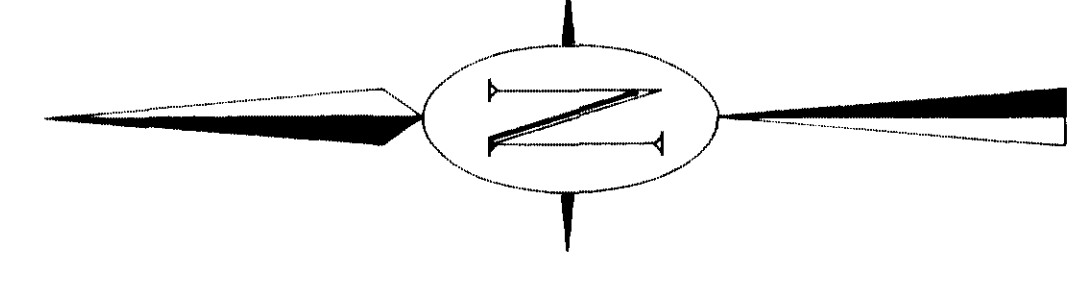
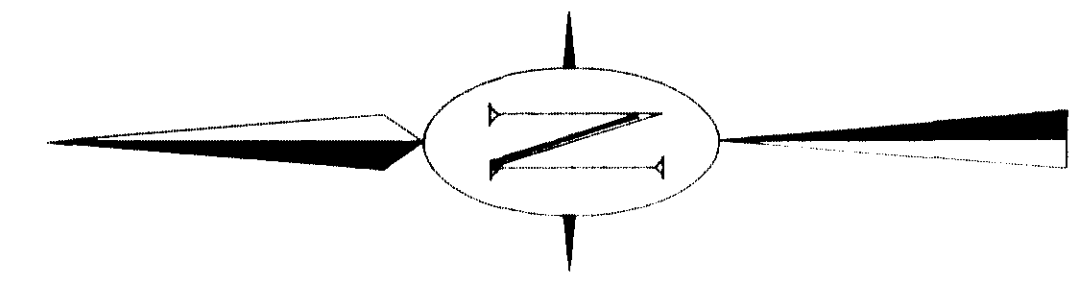
D. L. 2 1 0 4
 D. L. 9 2 6 6

D. L. 2 1 0 3

R E M. D. L. 2 0 9 7

EXPLANATORY PLAN TO ACCOMPANY A STATUTORY BUILDING SCHEME
 ON LOTS 1 TO 14 INCLUSIVE AND LOTS 16 TO 33 INCLUSIVE
 PLAN PGP36539 ---, DISTRICT LOT 2097
 CARIBOO DISTRICT.

SCALE 1 : 1000 B.C.G.S. 930.096
 ALL DIMENSIONS ARE MEASURED IN METRES.
 HEADINGS ARE APPROXIMATE, DERIVED FROM PLAN PGP36539.



CERTIFIED CORRECT
 THIS PLAN IS A TRUE AND ACCURATE
 REPRESENTATION OF THE
 REALTY DESCRIBED THEREIN.
 J. L. JONES & ASSOCIATES
 1100 - 10th Street, S.E. - Suite 100
 Olympia, WA 98513
 DATE: 11/11/03
 JOHN L. JONES - owner