

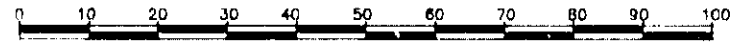
26-FF-226

PLAN OF STATUTORY RIGHT OF WAY THROUGH
 LOTS 27 AND 28, PLAN PGP 36539,
 DISTRICT LOT 2097
 CARIBOO DISTRICT

PLAN No. PGP 36540

DEPOSITED IN THE LAND TITLE OFFICE
 AT PRINCE GEORGE, B.C., THIS 11
 DAY OF SEPT, 1992

SCALE = 1 : 1000 B.C.G.S. 93G.096



DISTANCES ARE SHOWN IN METRES.

THIS PLAN SHOWS GROUND-LEVEL MEASURED DISTANCES.
 PRIOR TO COMPUTATION OF U.T.M. COORDINATES,
 MULTIPLY BY COMBINED FACTOR 0.9995105393.

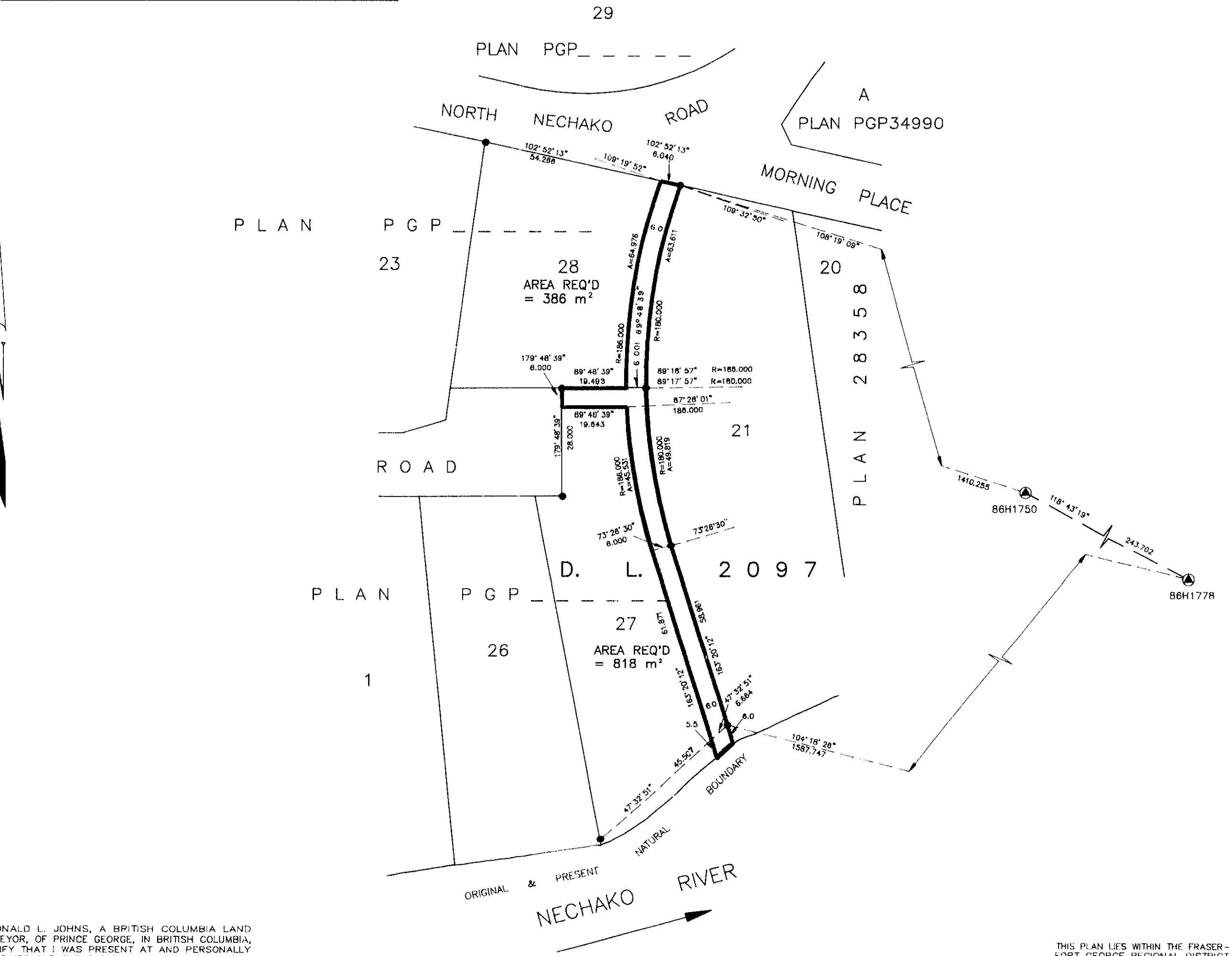
GRID BEARINGS ARE DERIVED FROM OBSERVATIONS
 BETWEEN CONTROL MONUMENTS 86H1750 AND 86H1778.
 INTEGRATED SURVEY AREA NUMBER 39.

LEGEND

- STANDARD IRON POST FOUND.
- ▲ STANDARD CONTROL MONUMENT.

BOOK OF REFERENCE

DESCRIPTION	AREA REQUIRED
LOT 27, PLAN PGP _____, DISTRICT LOT 2097	818 m ²
LOT 28, PLAN PGP _____, DISTRICT LOT 2097	386 m ²



I, RONALD L. JOHNS, A BRITISH COLUMBIA LAND SURVEYOR, OF PRINCE GEORGE, IN BRITISH COLUMBIA, CERTIFY THAT I WAS PRESENT AT AND PERSONALLY SUPERINTENDED THE SURVEY REPRESENTED BY THIS PLAN AND THAT THE SURVEY AND PLAN ARE CORRECT. THE SURVEY WAS COMPLETED ON THE 31ST DAY OF JULY, 1992.

R.L. Johns
 R.L. JOHNS, B.C.L.S.

THIS PLAN LIES WITHIN THE FRASER-FORT GEORGE REGIONAL DISTRICT.

R.L. JOHNS & ASSOCIATES
 LEGAL AND ENGINEERING SURVEYS
 240 VICTORIA STREET
 PRINCE GEORGE, B.C. V2L 2J4
 PHONE: (604) 562-5759
 FAX: (604) 562-5703