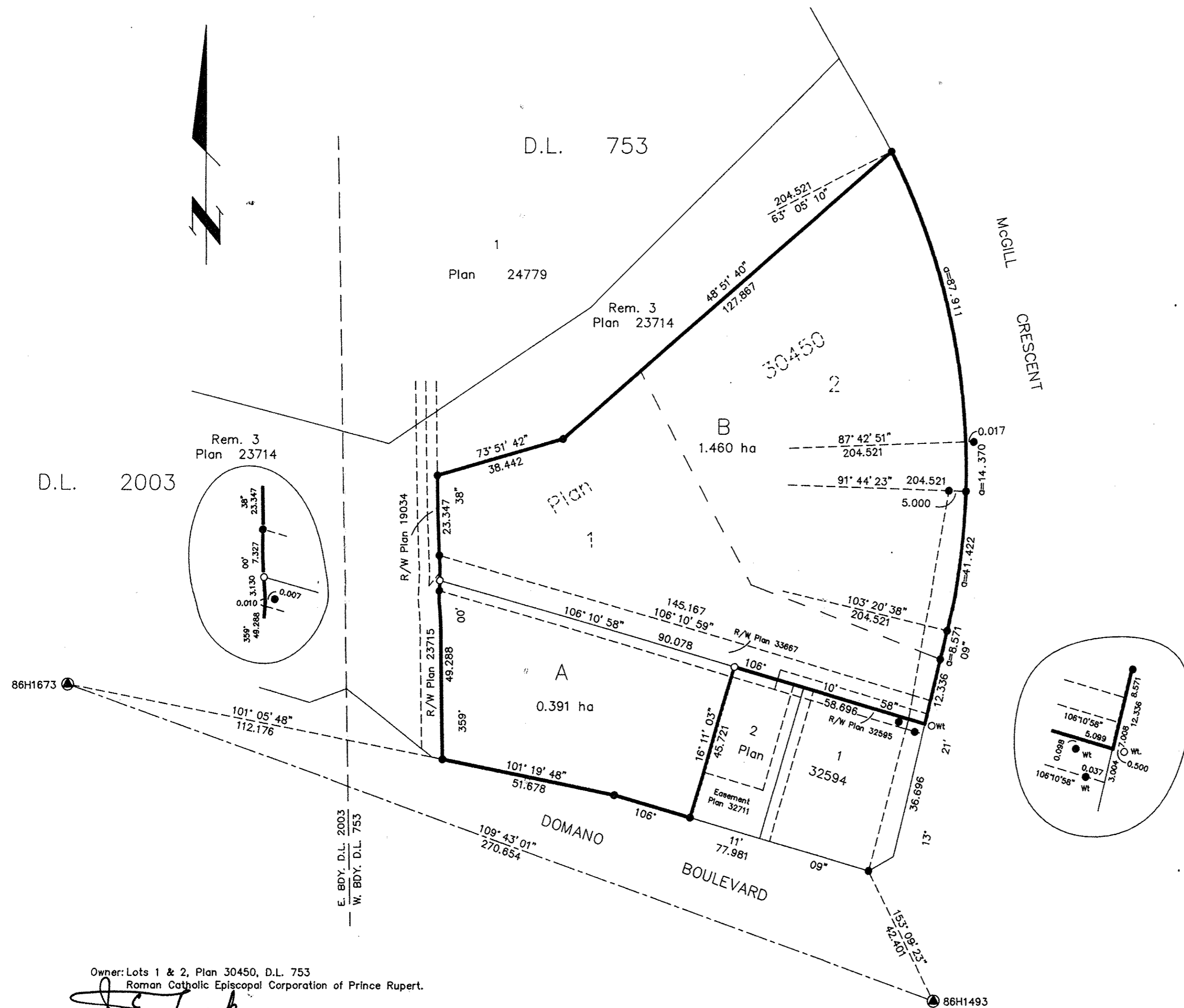


Deposited in the Land Title Office at Prince George this 22 day of July 1992

W. Y. Sandy
REGISTRAR



PLAN OF SUBDIVISION OF LOTS 1 AND 2, PLAN 30450, DISTRICT LOT 753, CARIBOO DISTRICT B.C.G.S. 93G.097

Scale: 1 : 1000 (Distances are in metres)

Note: This plan shows ground level measured distances. Prior to computation of U.T.M. co-ordinates multiply by the combined factor 0.9995105393

Grid bearings are derived from observations between control monuments 86H1673 and 86H1493, integrated survey area number 39, City of Prince George, B.C.

- LEGEND**
- Standard Iron Post Found
 - Standard Iron Post Placed
 - ⊙ Control Monument
 - Wt Denotes Witness

Owner: Lots 1 & 2, Plan 30450, D.L. 753
Roman Catholic Episcopal Corporation of Prince Rupert.

J. E. Larkin
Authorized signatory

J. E. LARKIN
Print Name

Paul Dorweiler
Witness

PAUL DORWEILER
Print Name

Box 7000
Address

PRINCE GEORGE B.C. V2N 3Z2
Postal Code

Business mgr
Occupation

Approved under the Land Title Act this 16th day of JULY 1992

Wayne Hallstrom
Approving Officer
City of Prince George

I, Gordon Kilbride, a British Columbia Land Surveyor of Prince George in British Columbia, certify that I was present at and personally supervised the survey represented by this plan and that the survey and plan are correct. The survey was completed on the 9th day of JULY, 1992.

Gordon Kilbride
Gordon Kilbride, B.C.L.S.

This plan lies within the Fraser-Fort George Regional District.

KILBRIDE SURVEYS British Columbia Land Surveyors [®] Prince George, B.C. Ph: (604) 562-1196 Fax: 562-3656		
F.B.- TK 11	D.L.- 753	REF. NO.- 92454