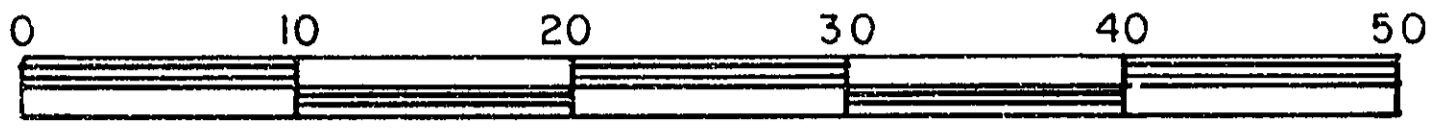


EXPLANATORY PLAN OF EASEMENT WITHIN
LOT 196, PLAN 21607
DISTRICT LOT 2611
CARIBOO DISTRICT - BRITISH COLUMBIA

26-FF-226

SCALE: 1 : 500

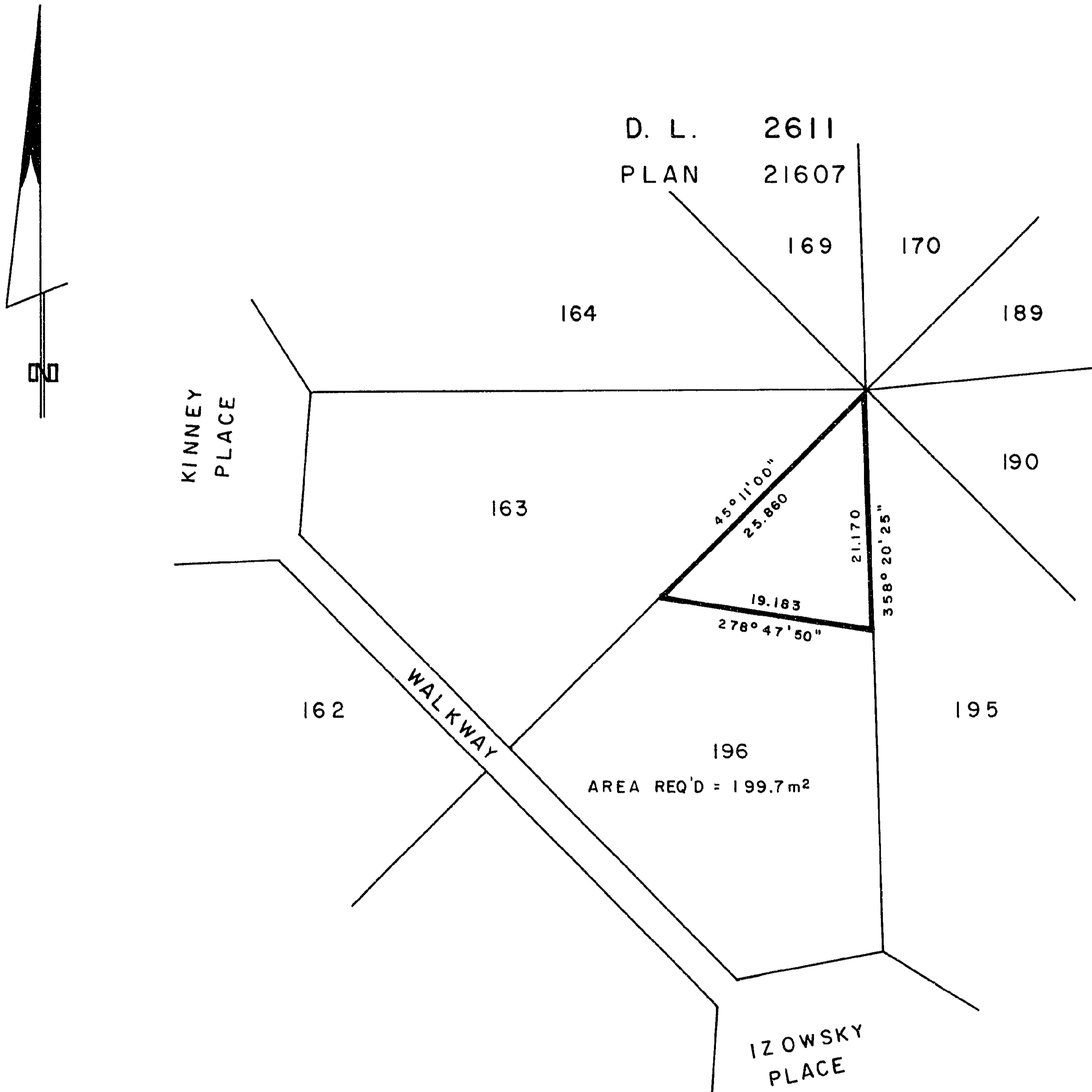


PLAN No PGP36381

Deposited in the Land Title
Office at Prince George, B.C. this
10 day of July, 1992.

NOTE: Bearings are astronomic, derived from
Plan 21607.

Registrar W. G. Grandy *per*



CERTIFIED CORRECT

According to measurements shown on
Plan 21607.

This 27 day of September, 1983.

D. A. Duffy
D. A. DUFFY, B.C.L.S.

This plan lies within the Fraser Fort George
Regional District.

W. D. USHER & ASSOCIATES
LAND SURVEYORS
PRINCE GEORGE - B. C.