

26-FF-226

PLAN NO. PGP36354

Deposited in the Land Title Office at Prince George this 6 day of July 1992

REFERENCE PLAN OF ACCESS EASEMENT IN LOT A, PLAN PGP 36337, DISTRICT LOT 4221, CARIBOO DISTRICT.

W.G. Gandy
REGISTRAR

B.C.G.S. 93G.097

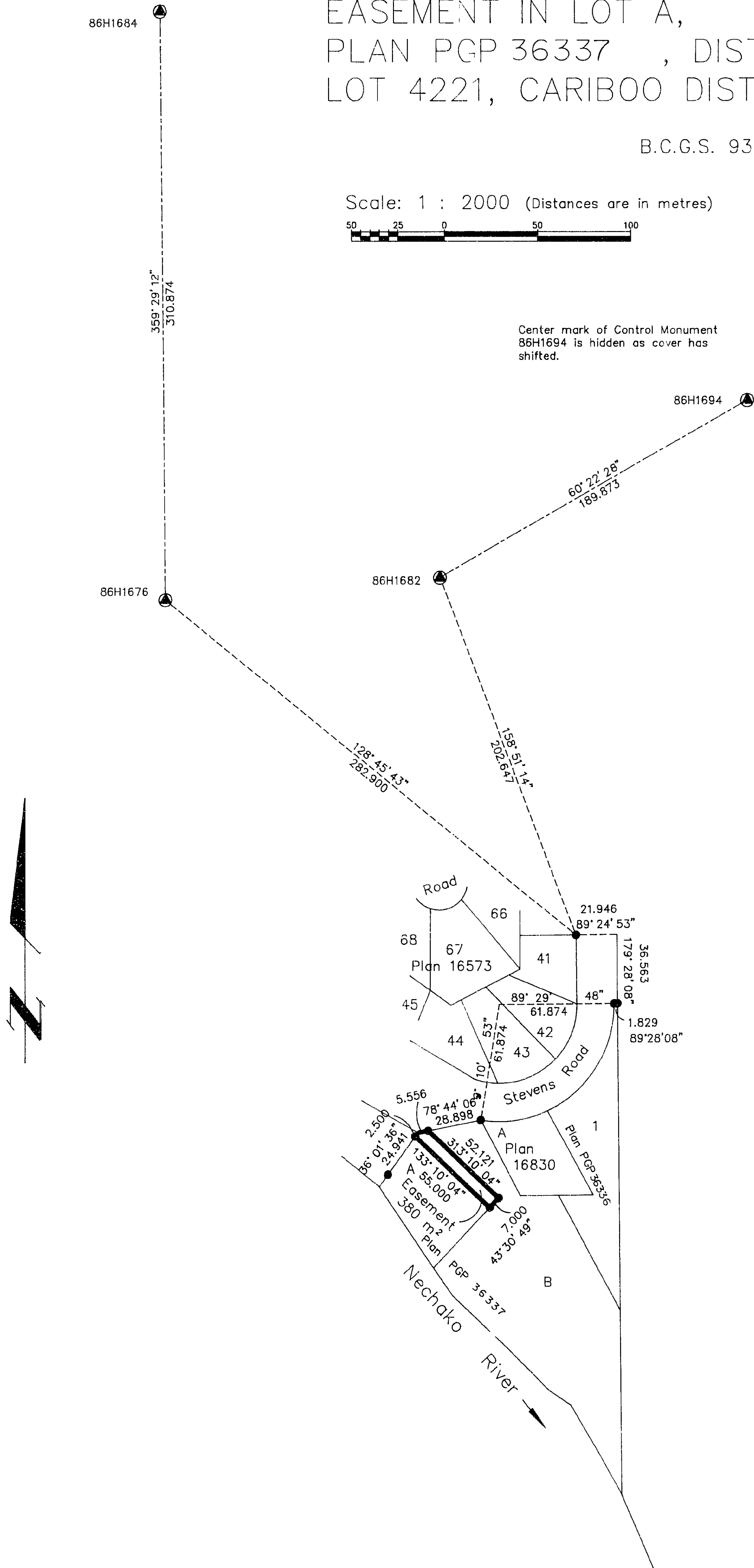
Scale: 1 : 2000 (Distances are in metres)



Grid bearings are derived from observations between control monuments 86H1676 and 86H1684, integrated survey area number 39, City of Prince George, B.C.

Center mark of Control Monument 86H1694 is hidden as cover has shifted.

Note: This plan shows ground level measured distances. Prior to computation of U.T.M. co-ordinates multiply by the combined factor 0.9995105393



LEGEND

- Standard Iron Post Found
- Standard Iron Post Placed
- ▲ Control Monument

I, Gordon Kilbride, a British Columbia Land Surveyor of Prince George in British Columbia, certify that I was present at and personally superintended the survey represented by this plan and that the survey and plan are correct. The survey was completed on the 26 day of May, 1992.

Gordon Kilbride
Gordon Kilbride, B.C.L.S.

This plan lies within the Fraser Fort George Regional District.

KILBRIDE SURVEYS British Columbia Land Surveyors Prince George, B.C. Ph: (604) 562-1196 Fax: 562-3656		
F.B.- RA	D.L.- 4221	REF. NO.- 91532A