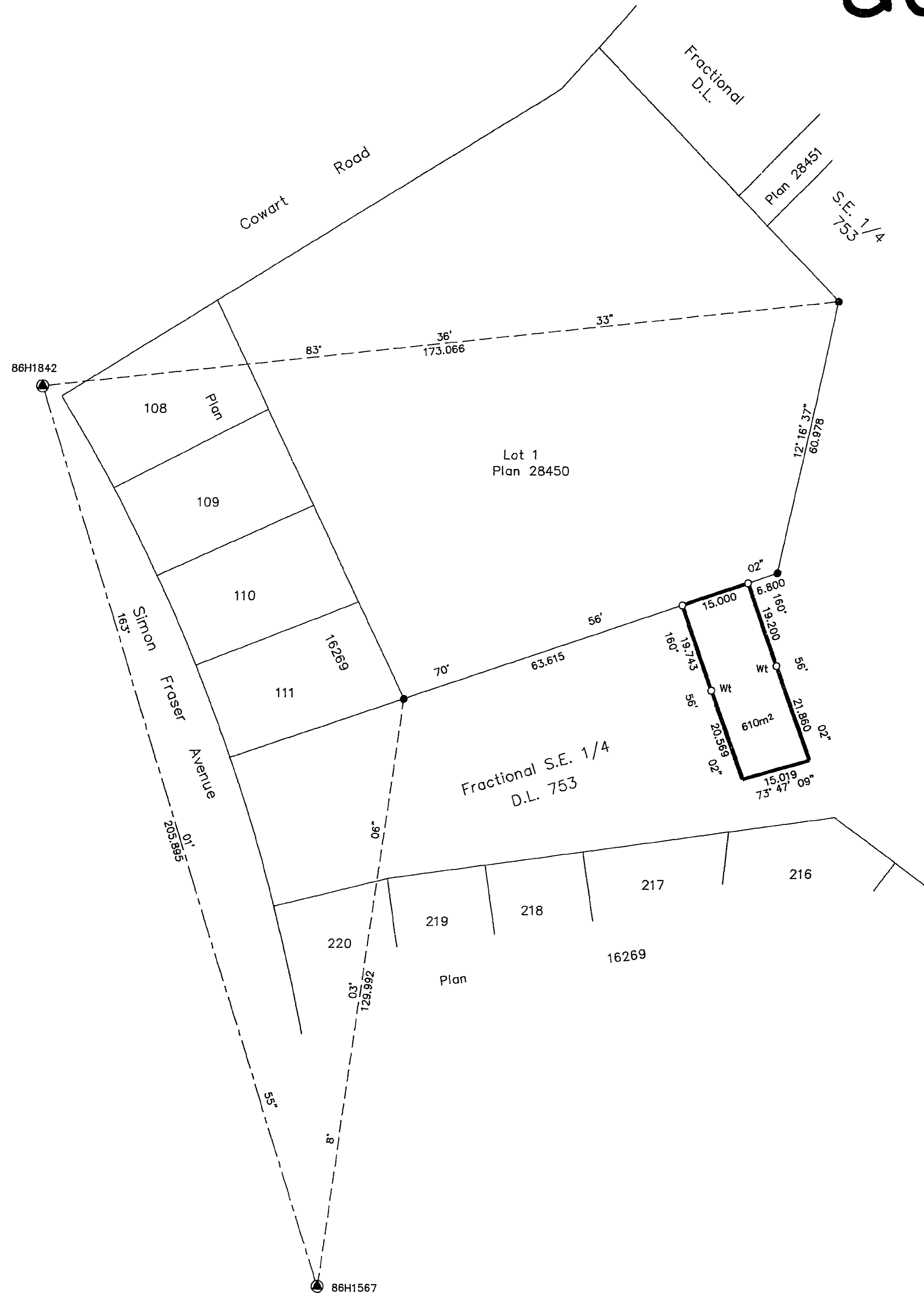


26-FF-226

PLAN NO. PGP36230

Deposited in the Land Title Office at Prince George this 25th day of MAY 1992

W. Bandy
REGISTRAR



REFERENCE PLAN OF EASEMENT WITHIN THE REMAINDER OF FRACTIONAL S.E.1/4 DISTRICT LOT 753, CARIBOO DISTRICT.

B.C.G.S. 93G.087

Scale: 1 : 750 (Distances are in metres)



Note: This plan shows ground level measured distances. Prior to computation of U.T.M. co-ordinates multiply by the combined factor 0.9995105393

Grid bearings are derived from observations between control monuments 86H1567 and 86H1842, integrated survey area number 39, City of Prince George, B.C.

LEGEND

- Standard Iron Post Found
- Standard Iron Post Placed
- ⊙ Control Monument

I, Gordon Kilbride, a British Columbia Land Surveyor of Prince George in British Columbia, certify that I was present at and personally superintended the survey represented by this plan and that the survey and plan are correct. The survey was completed on the 23 day of April, 1992.

Gordon Kilbride
Gordon Kilbride, B.C.L.S.

This plan lies within the Fraser Fort George Regional District.

KILBRIDE SURVEYS British Columbia Land Surveyors Prince George, B.C. Ph: (604) 562-1196 Fax: 562-3656		
F.B.- RA	D.L.- 753	REF. NO.- 92319