

PLAN NO. PGP36190

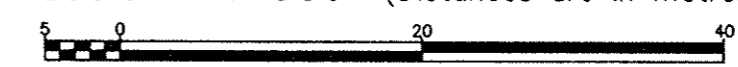
Deposited in the Land Title Office at Prince George this 6 day of May 1992

W.G.
REGISTRAR

REFERENCE PLAN OF EASEMENT WITHIN REMAINDER LOT B, PLAN 34593, DISTRICT LOT 2101, CARIBOO DISTRICT.

B.C.G.S. 93G.096

Scale: 1 : 500 (Distances are in metres)

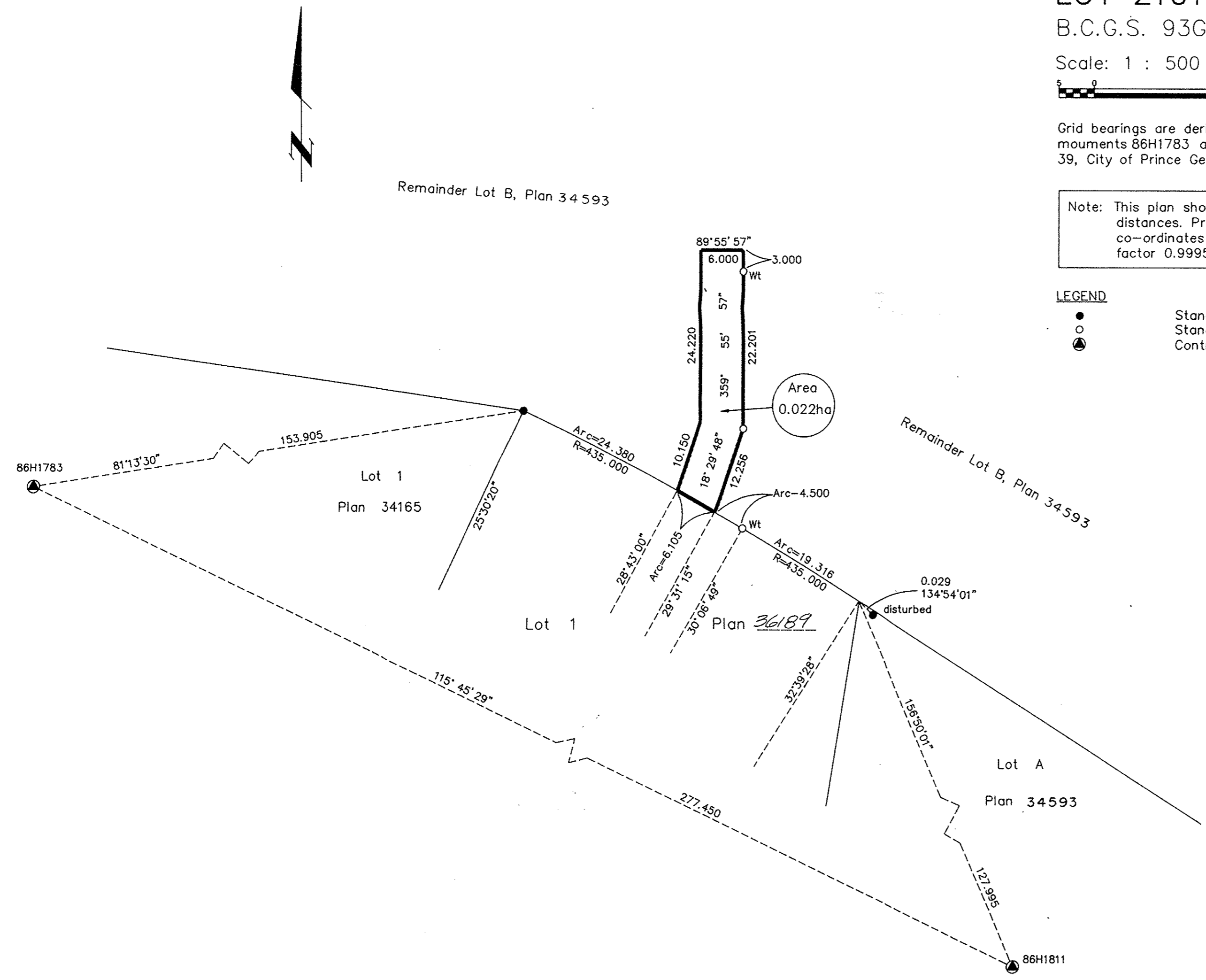


Grid bearings are derived from observations between control monuments 86H1783 and 86H1811, integrated survey area number 39, City of Prince George, B.C.

Note: This plan shows ground level measured distances. Prior to computation of U.T.M. co-ordinates multiply by the combined factor 0.9995105393

LEGEND

- Standard Iron Post Found
- Standard Iron Post Placed
- ⊙ Control Monument



I, Dale L. Keown, a British Columbia Land Surveyor of Prince George in British Columbia, certify that I was present at and personally superintended the survey represented by this plan and that the survey and plan are correct. The survey was completed on the 2nd day of April, 1992.

Dale Keown
Dale L. Keown, B.C.L.S.

This plan lies within the Fraser-Fort George Regional District.

KILBRIDE SURVEYS British Columbia Land Surveyors Prince George, B.C. Ph: (604) 562-1196 Fax: 562-3656		
F.B.- RA	D.L.- 2101	REF. NO.- 91764RW