

Deposited in the Land Title Office at Prince George this 17 day of October 1991

REGISTRAR WB

### REFERENCE PLAN OF PART OF REMAINDER OF DISTRICT LOT 9265, CARIBOO DISTRICT.

FOR DEPOSIT PURSUANT TO SECTION 6  
OF THE EXPROPRIATION ACT.

B.C.G.S. 93G.086

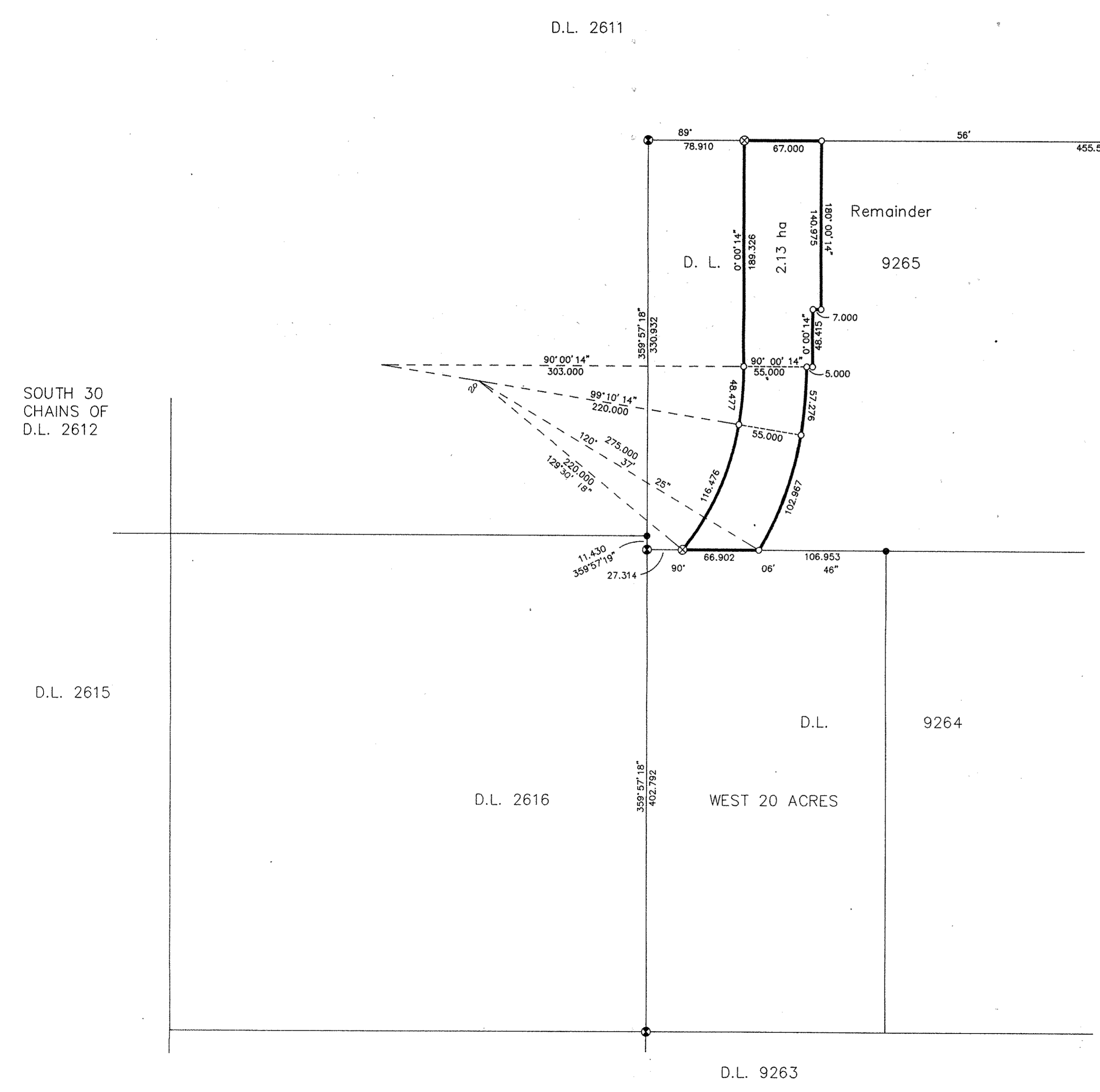
Scale: 1 : 2500 (Distances are in metres)

Note: This plan shows ground level measured distances. Prior to computation of U.T.M. co-ordinates multiply by the combined factor 0.9995100305

Grid bearings are derived from observations between control monuments 85H1123 and 85H1121, integrated survey area number 39, City of Prince George, B.C.

#### LEGEND

- ⊗ Standard Capped Post Found
- ⊗ Standard Capped Post Placed
- Standard Iron Post Found
- Standard Iron Post Placed
- ⊙ Control Monument



SOUTH 30 CHAINS OF D.L. 2612

D.L. 2615

D.L. 2616

D.L. 9264

D.L. 9263

I, Gordon Kilbride, a British Columbia Land Surveyor of Prince George in British Columbia, certify that I was present at and personally superintended the survey represented by this plan and that the survey and plan are correct. The survey was completed on the 17 day of October, 1991.

*Gordon Kilbride*  
Gordon Kilbride, B.C.L.S.

This plan lies within the Fraser Fort George Regional District.

<b>KILBRIDE SURVEYS</b> British Columbia Land Surveyors Prince George, B.C.		
Ph: (604) 562-1196 Fax: 562-3656		
F.B.- SU 58	D.L.- 9265	REF. NO.- 91798