

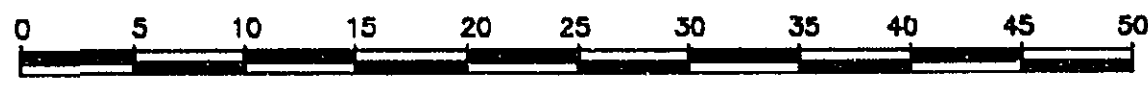
26-FF-226

PLAN No. PGP 36081

DEPOSITED IN THE LAND TITLE OFFICE
AT PRINCE GEORGE, B.C., THIS 16
DAY OF March, 1992

W.G. Gandy
REGISTRAR

PLAN OF STATUTORY RIGHT OF WAY THROUGH LOT 1, PLAN 27656 DISTRICT LOTS 754 & 1605 CARIBOO DISTRICT



SCALE = 1 : 500 B.C.G.S. 93G.087

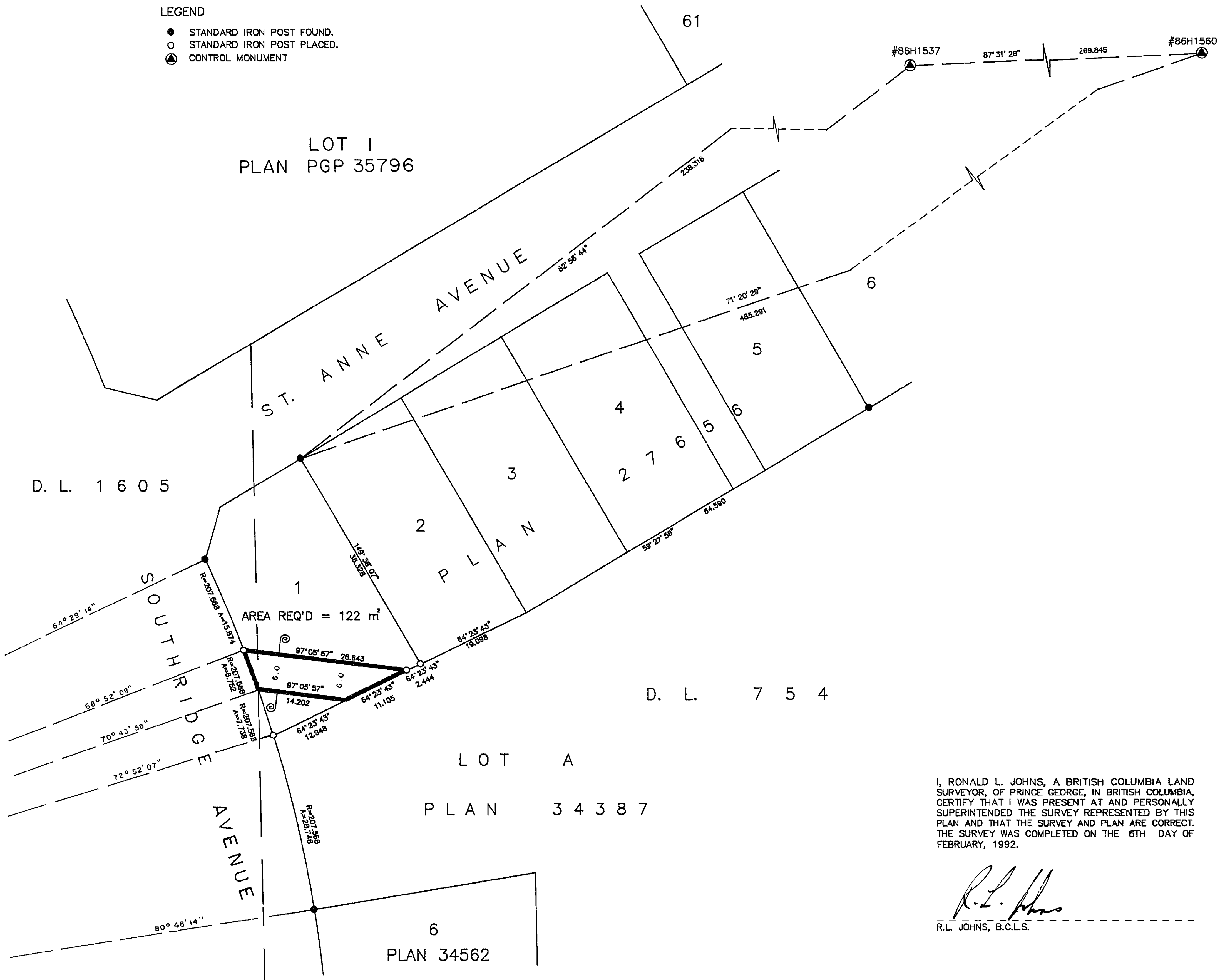
DISTANCES ARE SHOWN IN METRES.

GRID BEARINGS ARE DERIVED FROM OBSERVATIONS
BETWEEN CONTROL MONUMENTS 86H1537 AND 86H1560,
INTEGRATED SURVEY AREA NUMBER 39.

THIS PLAN SHOWS GROUND-LEVEL MEASURED DISTANCES.
PRIOR TO COMPUTATION OF U.T.M. COORDINATES,
MULTIPLY BY COMBINED FACTOR 0.9995105393.

LEGEND

- STANDARD IRON POST FOUND.
- STANDARD IRON POST PLACED.
- ⊙ CONTROL MONUMENT



I, RONALD L. JOHNS, A BRITISH COLUMBIA LAND SURVEYOR, OF PRINCE GEORGE, IN BRITISH COLUMBIA, CERTIFY THAT I WAS PRESENT AT AND PERSONALLY SUPERINTENDED THE SURVEY REPRESENTED BY THIS PLAN AND THAT THE SURVEY AND PLAN ARE CORRECT. THE SURVEY WAS COMPLETED ON THE 6TH DAY OF FEBRUARY, 1992.

R.L. Johns
R.L. JOHNS, B.C.L.S.

THIS PLAN LIES WITHIN THE FRASER-FORT GEORGE REGIONAL DISTRICT.

R.L. JOHNS & ASSOCIATES
LEGAL AND ENGINEERING SURVEYS
240 VICTORIA STREET
PRINCE GEORGE, B.C. V2L 2J4
(604) 562-5759