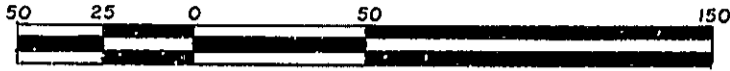


STATUTORY RIGHT OF WAY PLAN THROUGH LOT 1, D.L. 1600 CARIBOO DISTRICT PLAN 10758

PLAN PGP36019



SCALE 1:2000

B.C.G.S. 93G.086,087

Deposited in the Land Title Office
at Prince George, B.C. this 17th
day of FEBRUARY 1992

LEGEND

Grid bearings are derived from observation between control monuments 86H1720 and 86H1722
Integrated survey area number 39.

All distances are in metres.

This Plan shows ground-level measured distances.

Prior to computation of U.T.M. Co-ordinates, multiply by combined factor 0.9995105393

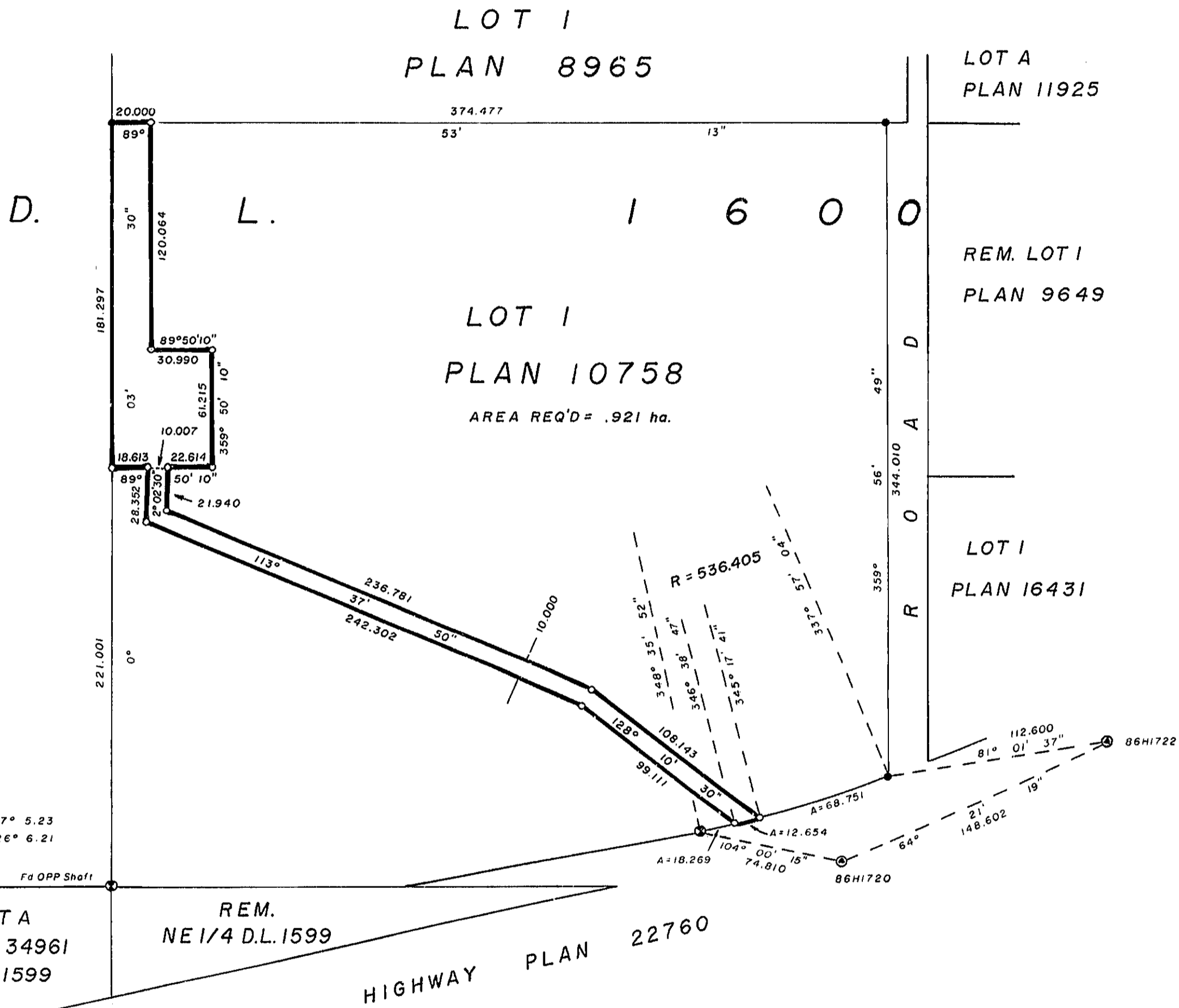
- Standard Iron Post Found.
- ⊙ Standard Capped Post Found.
- Standard Iron Post Placed.
- ⊙ Control Monument Found.

BOOK OF REFERENCE

DESCRIPTION	AREA
LOT 1 D.L. 1600 PLAN 10758	.921 ha.

W. Hardy per
REGISTRAR

26-FF-226



Fd OBT's
.15cm PINE 67° 5.23
.20cm PINE 126° 6.21

Fd OPP Shaft

This Plan lies within the Fraser-Fort George Regional District.

I, Richard E. Gook, a British Columbia land surveyor, of the city of Prince George, in British Columbia, certify that I was present at and personally superintended the survey represented by this plan, and that the survey and plan are correct. The survey was completed on the 5th day of December, 1991.

[Signature]
B.C.L.S.

R. E. GOOK & ASSOCIATES FILE: 91-0099 P.G.
B.C. LAND SURVEYORS
691 FRONT STREET
QUESNEL, B.C. V2J 2K9
PHONE 992-2424