

PLAN OF EASEMENT THROUGH  
 LOT 4, PLAN 15419 AND  
 LOT 1, PLAN 18202,  
 DISTRICT LOT 1588,  
 CARIBOO DISTRICT.

PLAN NO. PGP **35831**

Deposited in the Land Title Office at Prince  
 George this **09** day of **December** 1991.

B.C.G.S. 93G.086

Scale: 1 : 2000 (Distances are in metres)



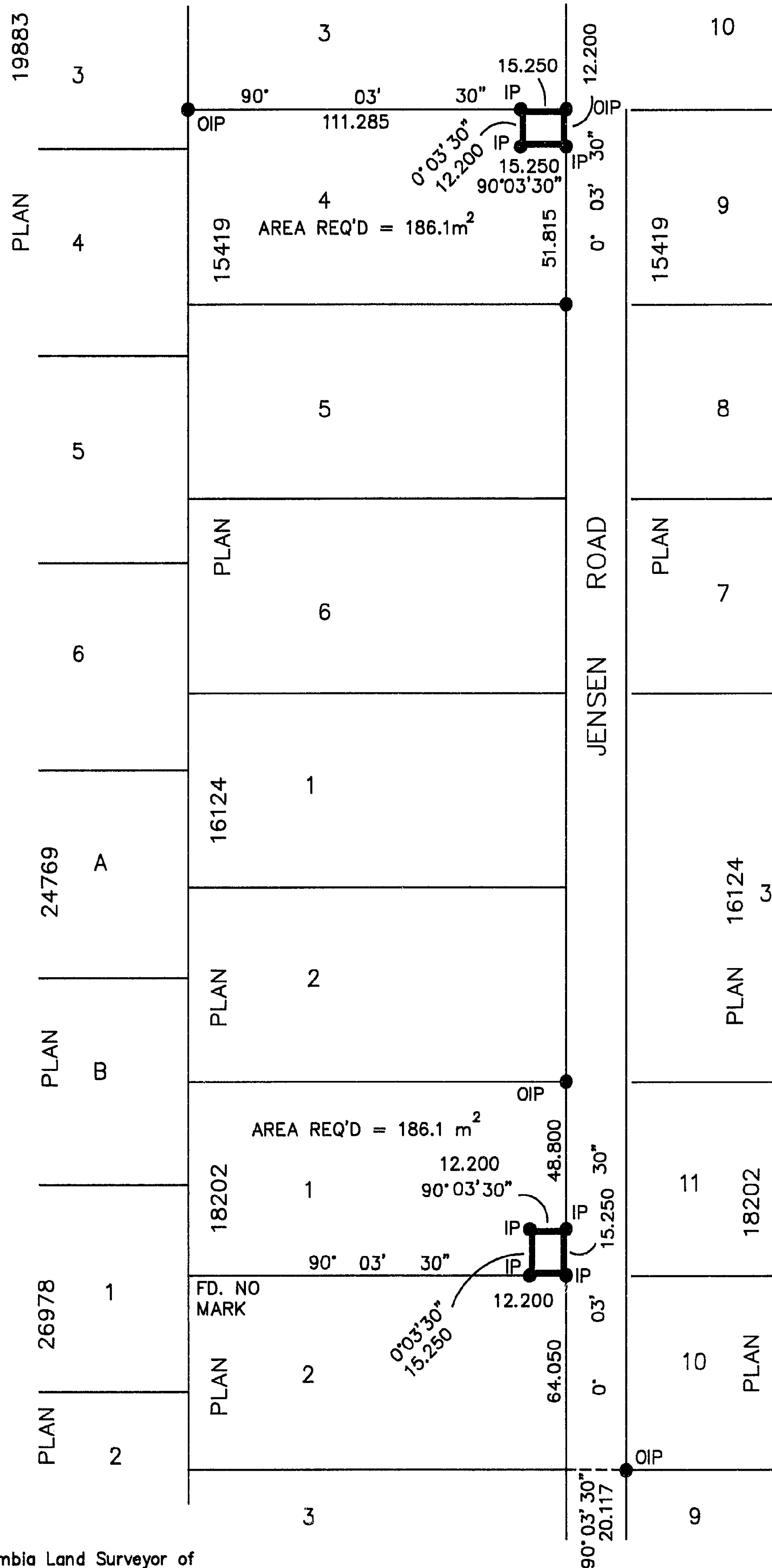
**LEGEND**

Bearings are astronomic, derived from the west  
 boundary of Jensen Road = 0°03'30" as shown on  
 Plans 15419 and 18202

- OIP...denotes Old Iron Pin found
- IP...denotes Iron Pin set

*W. Bandy per: [Signature]*  
 REGISTRAR

BOOK OF REFERENCE	
DESCRIPTION	AREA
Lot 4, Plan 15419	186.1 m <sup>2</sup>
Lot 1, Plan 18202	186.1 m <sup>2</sup>



26.9%

I, DONALD A. DUFFY, a British Columbia Land Surveyor of  
 Prince George in British Columbia, certify that I was  
 present at and personally superintended the survey  
 represented by this plan and that the survey and plan  
 are correct. The survey was completed on the 10th day  
 of August, 1982.

*[Signature]*  
 DONALD A. DUFFY, B.C.L.S.

This plan lies within the Fraser Fort  
 George Regional District.

W. D. USHER & ASSOCIATES  
 LAND SURVEYORS  
 PRINCE GEORGE ---B.C.  
 PC 36 13478