

# 26-FF-226

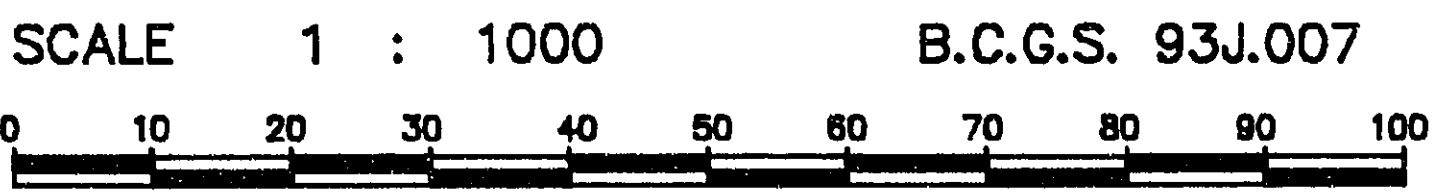
# PGP35825

PLAN No. PGP \_\_\_\_\_

## REFERENCE PLAN OF EASEMENT THROUGH LOT B, PLAN PGP35824 DISTRICT LOT 4031 CARIBOO DISTRICT

DEPOSITED IN THE LAND TITLE OFFICE  
AT PRINCE GEORGE, B.C., THIS 3rd  
DAY OF December, 1991.

W B Gandy per  
REGISTRAR P.A.

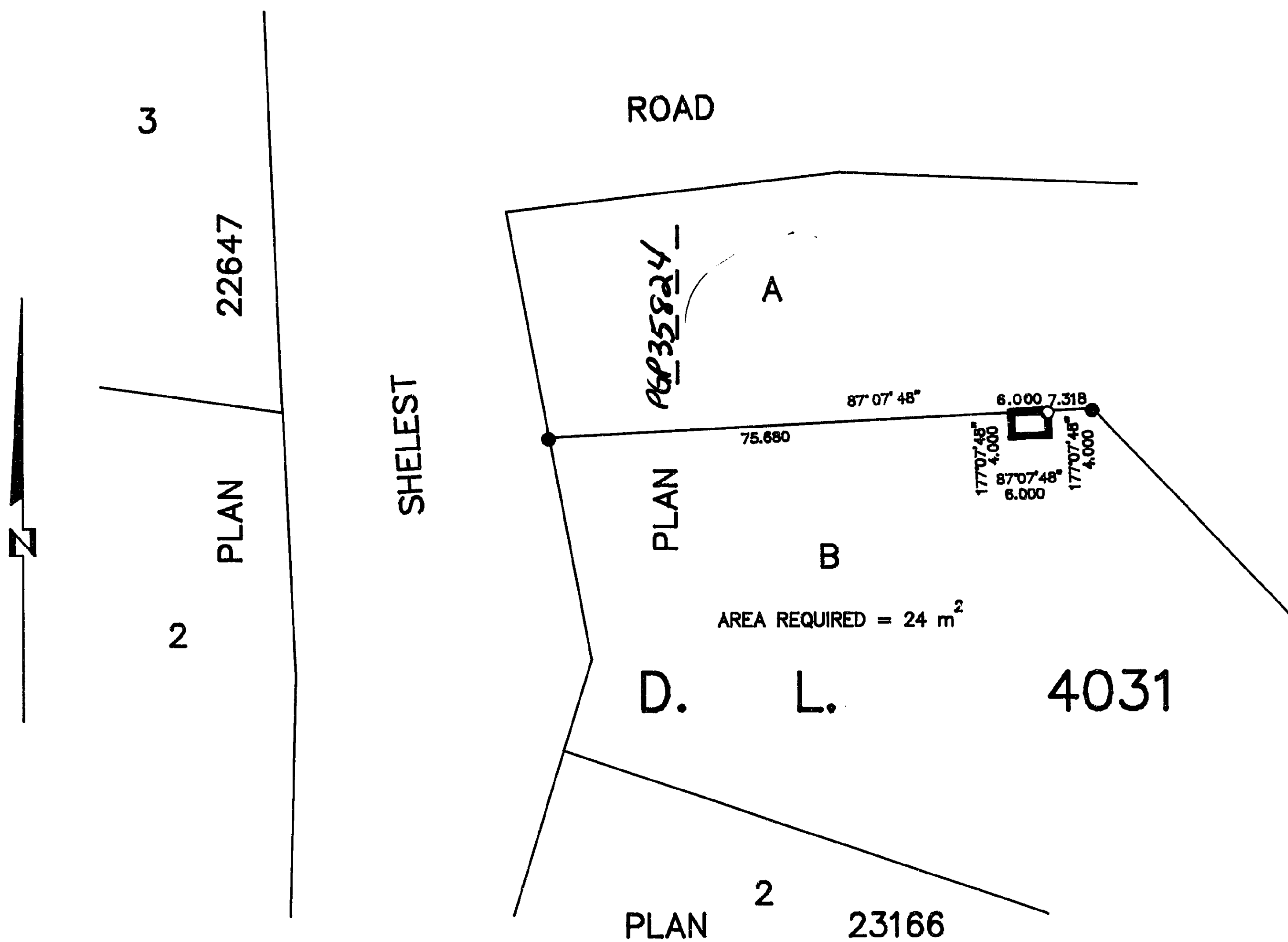


BEARINGS ARE ASTRONOMIC, DERIVED FROM THE NORTH  
BOUNDARY OF LOT B, PLAN \_\_\_\_\_

DISTANCES ARE SHOWN IN METRES.

### LEGEND

- STANDARD IRON POST PLACED.
- STANDARD IRON POST FOUND.



I, RONALD L. JOHNS, A BRITISH COLUMBIA LAND SURVEYOR, OF PRINCE GEORGE, IN BRITISH COLUMBIA, CERTIFY THAT I WAS PRESENT AT AND PERSONALLY SUPERINTENDED THE SURVEY REPRESENTED BY THIS PLAN AND THAT THE SURVEY AND PLAN ARE CORRECT. THE SURVEY WAS COMPLETED ON THE 14TH DAY OF JUNE, 1990.

THIS PLAN LIES WITHIN THE FRASER-FORT GEORGE REGIONAL DISTRICT.

R.L. Johns  
R.L. JOHNS, B.C.L.S.

R.L. JOHNS & ASSOCIATES  
LEGAL AND ENGINEERING SURVEYS  
P.O. BOX 824  
PRINCE GEORGE, B.C. V2L 4V3  
(604) 562-5759