

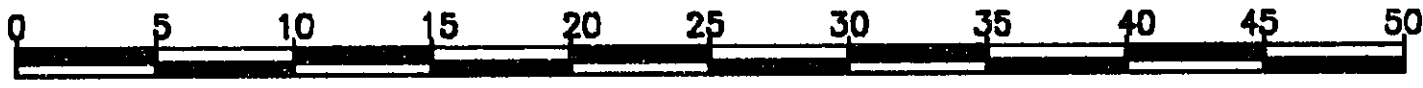
26-FF-226

EXPLANATORY PLAN OF EASEMENT THROUGH
 LOT B, PLAN PGP35820
 DISTRICT LOT 745
 CARIBOO DISTRICT

PLAN No. PGP35821

DEPOSITED IN THE LAND TITLE OFFICE
 AT PRINCE GEORGE, B.C., THIS 3rd
 DAY OF December, 1991.

SCALE = 1 : 500 B.C.G.S. 93G.087

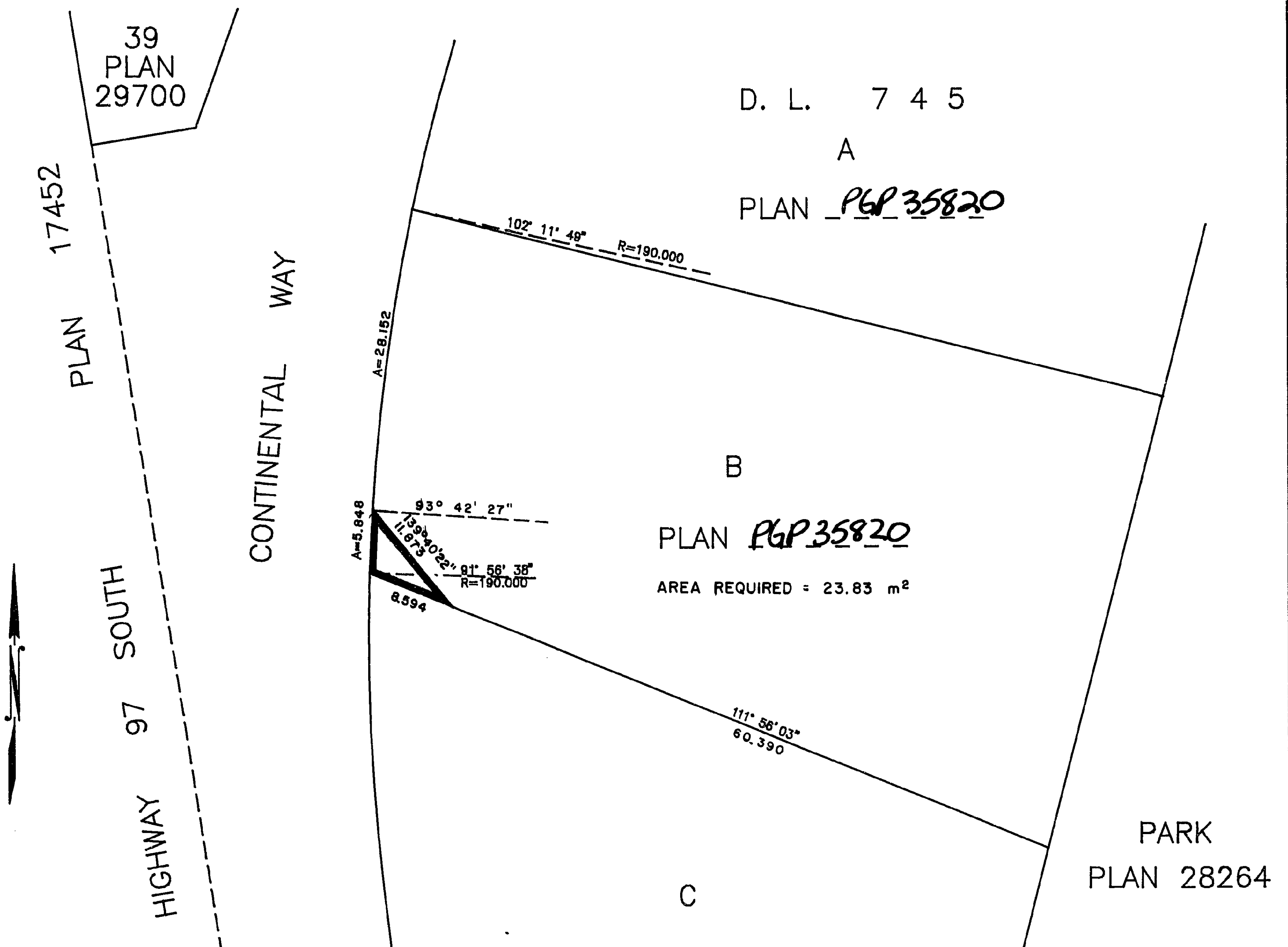


REGISTRAR "W. B. Handy" / jwk

BEARINGS ARE ASTRONOMIC, DERIVED FROM PLAN _____
 ALL DISTANCES ARE SHOWN IN METRES.

BOOK OF REFERENCE

DESCRIPTION	AREA REQUIRED
LOT B, PLAN <u>PGP35820</u> , D.L. 745	23.83 m ²



CERTIFIED CORRECT
 ACCORDING TO LAND TITLE OFFICE RECORDS
 THIS 3rd DAY OF DECEMBER, 1991.

THIS PLAN LIES WITHIN THE FRASER-FORT GEORGE REGIONAL DISTRICT.

R. L. Johns
 R. L. JOHNS, B.C.L.S.

R.L. JOHNS & ASSOCIATES
 LEGAL AND ENGINEERING SURVEYS
 P.O. BOX 824
 PRINCE GEORGE, B.C. V2L 4V3
 (604) 562-5759