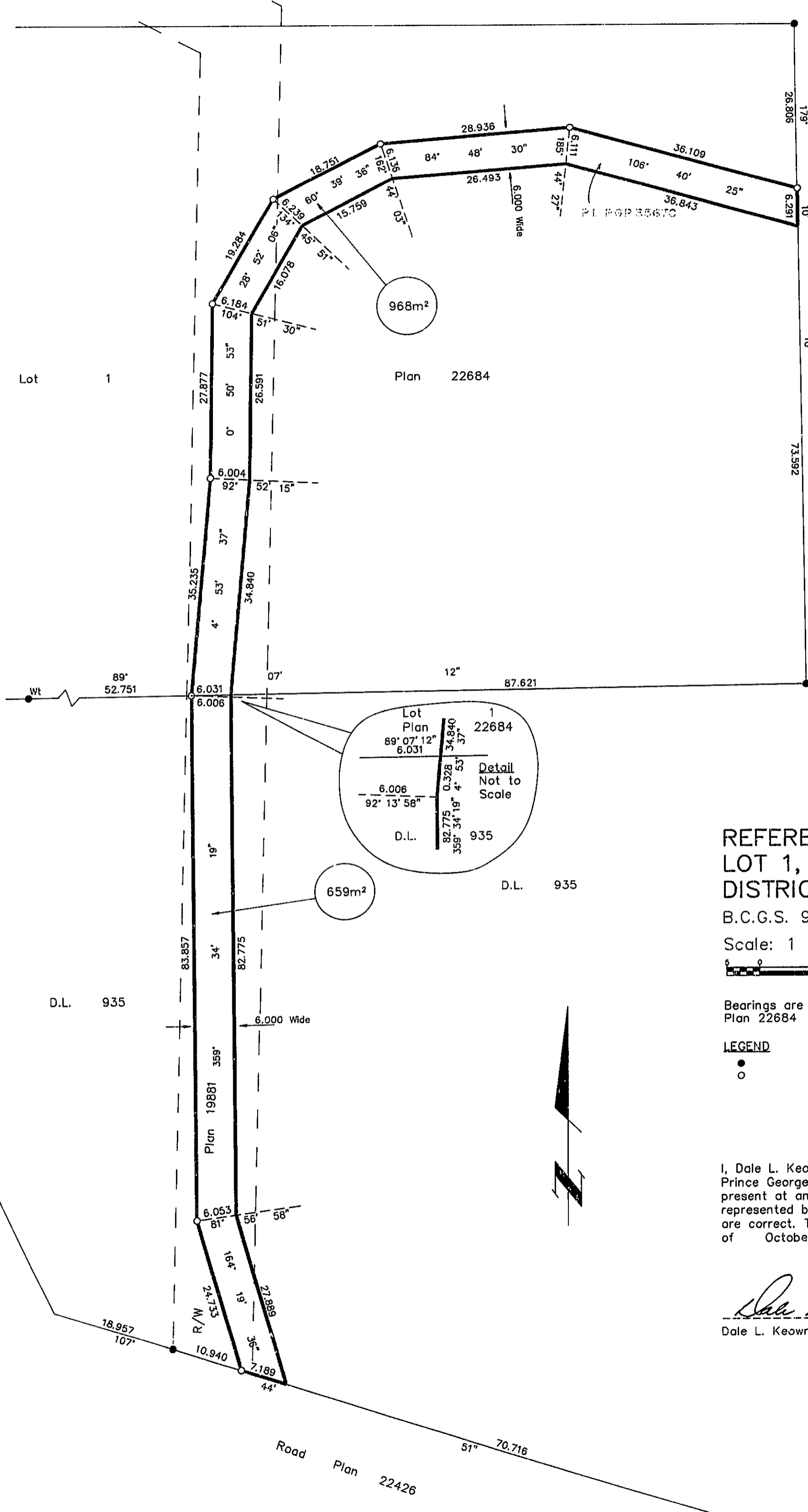


26-FF

PLAN NO. PGP35707

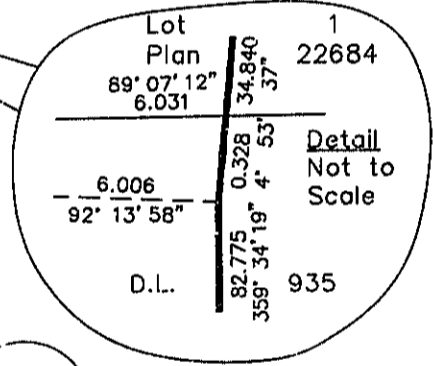
Deposited in the Land Title Office at Prince George this 22 day of October 1991.

"W.D. Dandy" / dwk
REGISTRAR



D.L. 935

BOOK OF REFERENCE	
DESCRIPTION	AREA
Lot 1, Plan 22684	968m ²
D.L. 935	659m ²



REFERENCE PLAN OF EASEMENT WITHIN LOT 1, PLAN 22684, AND REMAINDER OF DISTRICT LOT 935, CARIBOO DISTRICT.

B.C.G.S. 93G.097

Scale: 1 : 500 (Distances are in metres)



Bearings are astronomic, derived from Plan 22684

LEGEND

- Standard Iron Post Found
- Standard Iron Post Placed

I, Dale L. Keown, a British Columbia Land Surveyor of Prince George in British Columbia, certify that I was present at and personally superintended the survey represented by this plan and that the survey and plan are correct. The survey was completed on the 8TH day of October, 1991.

Dale Keown
Dale L. Keown, B.C.L.S.

This plan lies within the Fraser-Fort George Regional District.

KILBRIDE SURVEYS British Columbia Land Surveyors Prince George, B.C. Ph: (604) 562-1196 Fax: 562-3656		
F.B.- RA	D.L.- 935	REF. NO.- 91710